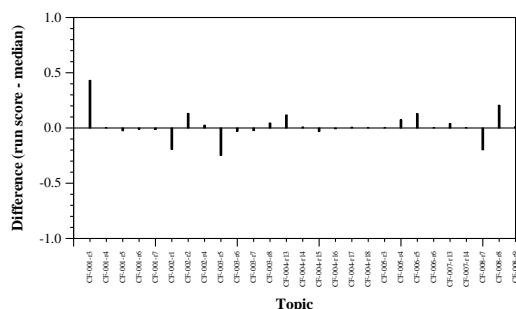


CrisisFACTs Track results — (IISER22) Indian Institutes of Science Education and Research, Kolkata

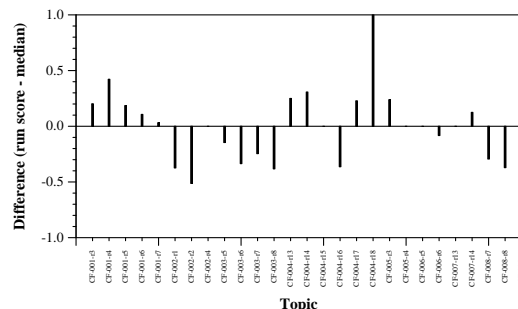
Summary Statistics	
Run ID	submission_final_4
Run type	Automatic
TREC-IS labels?	no
Streams	Twitter; Facebook; Reddit; Web news
Extractive or abstractive	extractive

Manual measure means	isolated	accumulative
Comprehensiveness	0.1582	0.1318
Redundancy Ratio	0.2036	0.3762
Assessed %	0.6277	0.6277
Matched %	0.2195	0.2195
Skipped %	0.0008	0.0008
Irrelevant %	0.4379	0.4379
Unmatched %	0.3418	0.3418

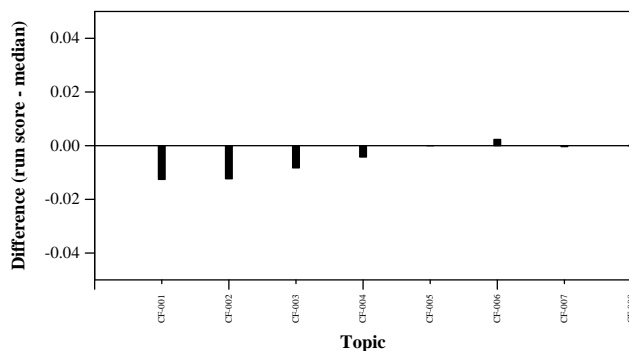
Automatic measure means	ICS	Wikipedia	NIST
ROUGE-1 F1	0.0042	0.0025	0.0087
ROUGE-2 F1	0.0008	0.0006	0.0022
ROUGE-L F1	0.0015	0.0012	0.0024
ROUGE-Lsum F1	0.0042	0.0024	0.0083
BERTscore F1	0.0097	0.0115	0.0117



Per-topic difference from median accumulative comprehensiveness



Per-topic difference from median accumulative redundancy ratio



Per-topic difference from median ROUGE-2 to ICS