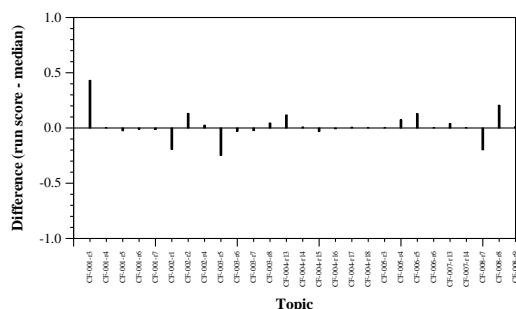


CrisisFACTs Track results — (IISER22) Indian Institutes of Science Education and Research, Kolkata

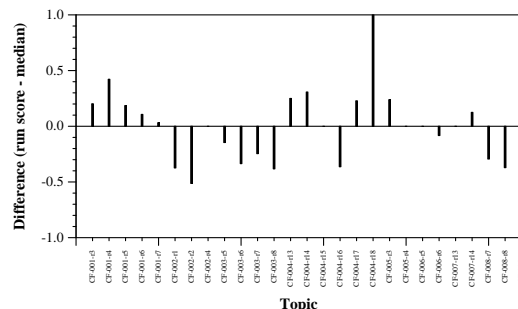
Summary Statistics	
Run ID	submission_final.json
Run type	Automatic
TREC-IS labels?	no
Streams	Twitter; Facebook; Reddit; Web news
Extractive or abstractive	extractive

Manual measure means	isolated	accumulative
Comprehensiveness	0.1582	0.1318
Redundancy Ratio	0.2036	0.3762
Assessed %	0.6277	0.6277
Matched %	0.2195	0.2195
Skipped %	0.0008	0.0008
Irrelevant %	0.4379	0.4379
Unmatched %	0.3418	0.3418

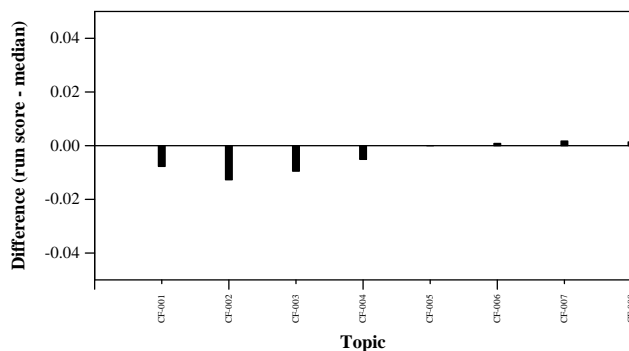
Automatic measure means	ICS	Wikipedia	NIST
ROUGE-1 F1	0.0043	0.0026	0.0089
ROUGE-2 F1	0.0008	0.0006	0.0023
ROUGE-L F1	0.0016	0.0013	0.0025
ROUGE-Lsum F1	0.0041	0.0022	0.0071
BERTscore F1	0.0097	0.0107	0.0113



Per-topic difference from median accumulative comprehensiveness



Per-topic difference from median accumulative redundancy ratio



Per-topic difference from median ROUGE-2 to ICS