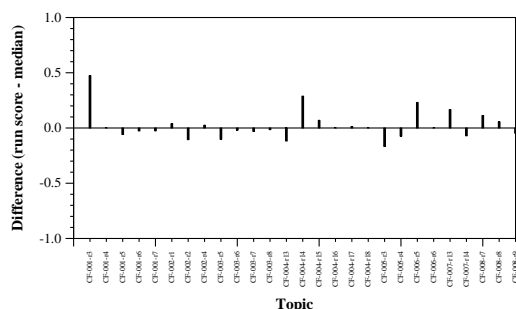


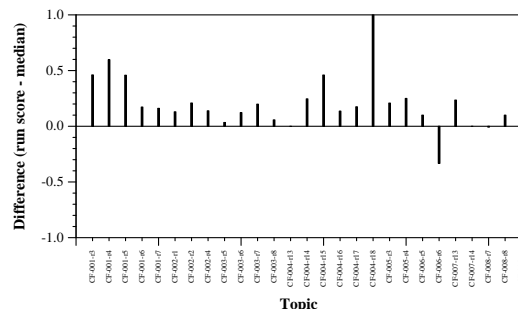
Summary Statistics	
Run ID	eXsum22_submission_02
Run type	Automatic
TREC-IS labels?	no
Streams	Twitter; Reddit; Web news
Extractive or abstractive	extractive

Manual measure means	isolated	accumulative
Comprehensiveness	0.1952	0.1378
Redundancy Ratio	0.3166	0.5873
Assessed %	0.6579	0.6579
Matched %	0.2472	0.2472
Skipped %	0.0018	0.0018
Irrelevant %	0.4381	0.4381
Unmatched %	0.3130	0.3130

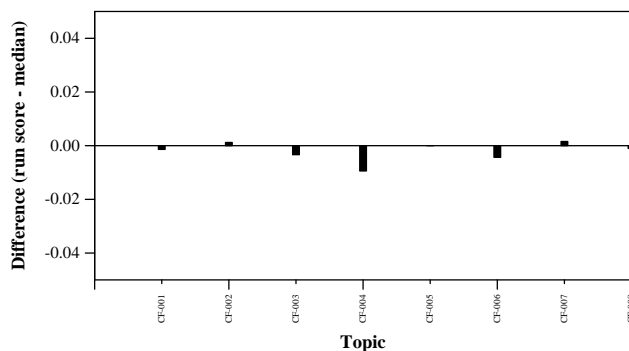
Automatic measure means	ICS	Wikipedia	NIST
ROUGE-1 F1	0.0042	0.0023	0.0085
ROUGE-2 F1	0.0008	0.0006	0.0023
ROUGE-L F1	0.0016	0.0012	0.0026
ROUGE-Lsum F1	0.0041	0.0022	0.0082
BERTscore F1	0.0096	0.0110	0.0116



Per-topic difference from median accumulative comprehensiveness



Per-topic difference from median accumulative redundancy ratio



Per-topic difference from median ROUGE-2 to ICS