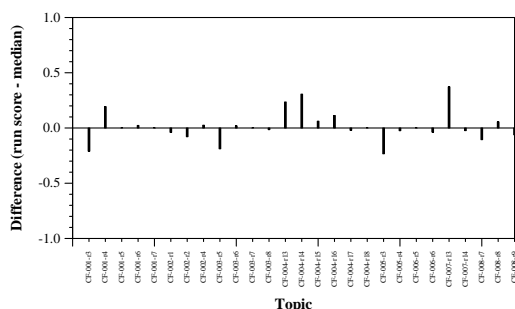


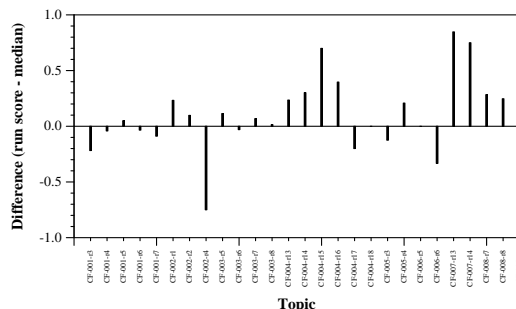
Summary Statistics	
Run ID	eXsum22_submission_01
Run type	Automatic
TREC-IS labels?	no
Streams	Twitter; Reddit; Web news
Extractive or abstractive	extractive

Manual measure means	isolated	accumulative
Comprehensiveness	0.1760	0.1286
Redundancy Ratio	0.3583	0.4927
Assessed %	0.4548	0.4548
Matched %	0.4734	0.4734
Skipped %	0.0007	0.0007
Irrelevant %	0.2232	0.2232
Unmatched %	0.3026	0.3026

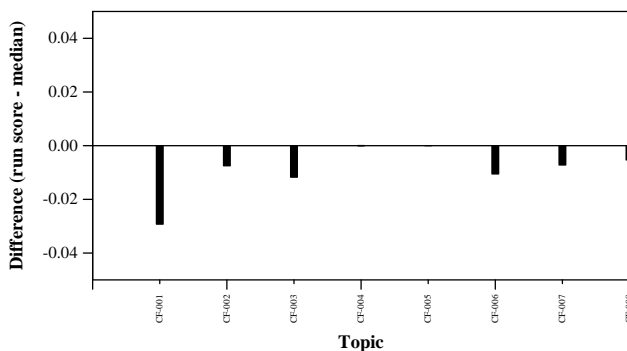
Automatic measure means	ICS	Wikipedia	NIST
ROUGE-1 F1	0.0036	0.0020	0.0078
ROUGE-2 F1	0.0007	0.0006	0.0022
ROUGE-L F1	0.0015	0.0012	0.0025
ROUGE-Lsum F1	0.0035	0.0019	0.0074
BERTscore F1	0.0093	0.0108	0.0119



Per-topic difference from median accumulative comprehensiveness



Per-topic difference from median accumulative redundancy ratio



Per-topic difference from median ROUGE-2 to ICS