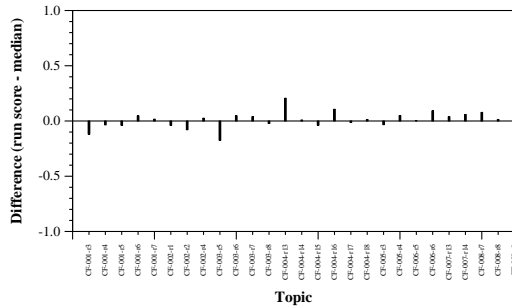


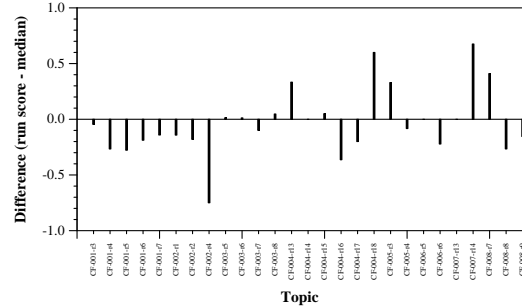
Summary Statistics	
Run ID	IRIT_IRIS_mean_USE_INeeds
Run type	Automatic
TREC-IS labels?	yes
Streams	Twitter; Facebook; Reddit; Web news
Extractive or abstractive	extractive

Manual measure means	isolated	accumulative
Comprehensiveness	0.1385	0.1245
Redundancy Ratio	0.2816	0.3502
Assessed %	0.4594	0.4594
Matched %	0.3174	0.3174
Skipped %	0.0063	0.0063
Irrelevant %	0.2953	0.2953
Unmatched %	0.3810	0.3810

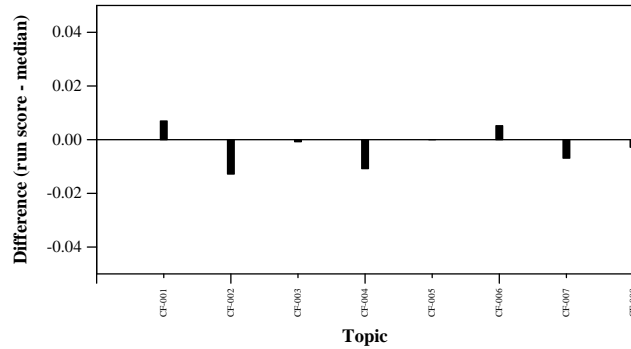
Automatic measure means	ICS	Wikipedia	NIST
ROUGE-1 F1	0.0042	0.0021	0.0090
ROUGE-2 F1	0.0008	0.0005	0.0028
ROUGE-L F1	0.0015	0.0010	0.0025
ROUGE-Lsum F1	0.0042	0.0019	0.0085
BERTscore F1	0.0101	0.0115	0.0123



Per-topic difference from median accumulative comprehensiveness



Per-topic difference from median accumulative redundancy ratio



Per-topic difference from median ROUGE-2 to ICS