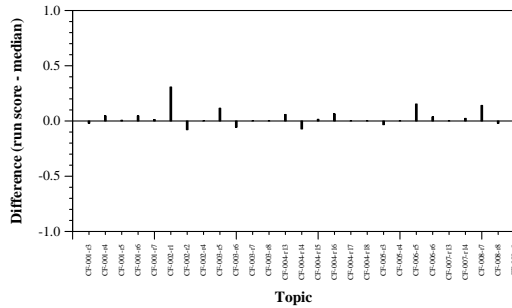


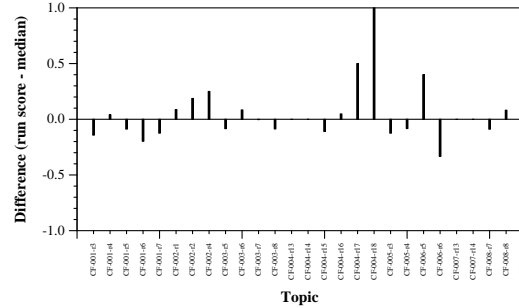
Summary Statistics	
Run ID	BM25_Heuristic_ILP
Run type	Automatic
TREC-IS labels?	no
Streams	Twitter; Reddit; Web news
Extractive or abstractive	extractive

Manual measure means	isolated	accumulative
Comprehensiveness	0.1819	0.1422
Redundancy Ratio	0.1812	0.4287
Assessed %	0.5622	0.5622
Matched %	0.3370	0.3370
Skipped %	0.0016	0.0016
Irrelevant %	0.2648	0.2648
Unmatched %	0.3966	0.3966

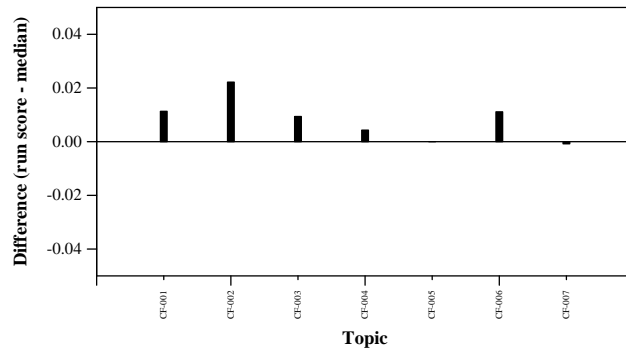
Automatic measure means	ICS	Wikipedia	NIST
ROUGE-1 F1	0.0050	0.0021	0.0098
ROUGE-2 F1	0.0010	0.0007	0.0032
ROUGE-L F1	0.0017	0.0011	0.0026
ROUGE-Lsum F1	0.0049	0.0020	0.0092
BERTscore F1	0.0097	0.0118	0.0124



Per-topic difference from median accumulative comprehensiveness



Per-topic difference from median accumulative redundancy ratio



Per-topic difference from median ROUGE-2 to ICS