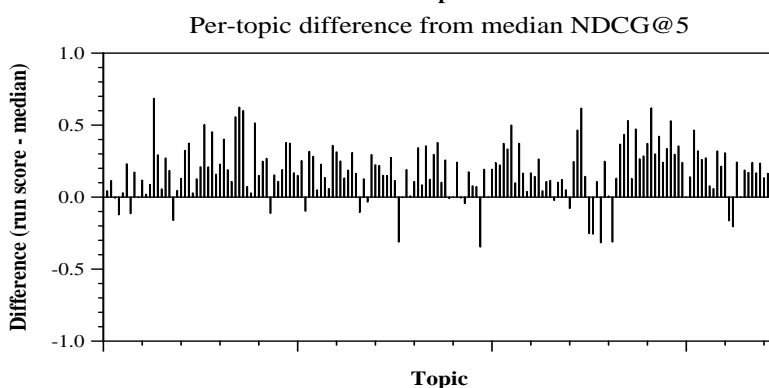
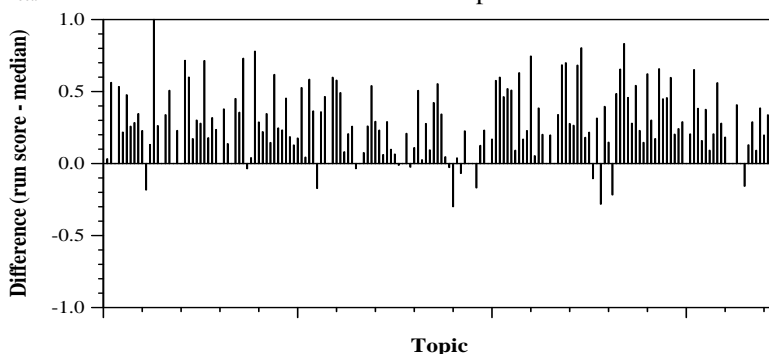
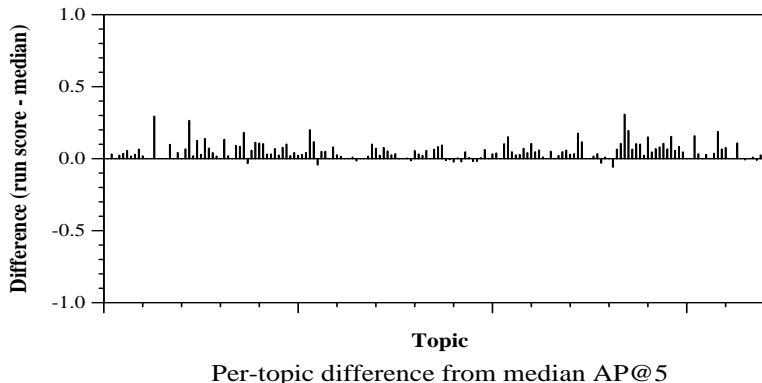
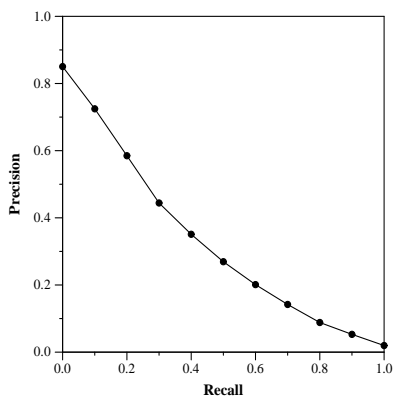


Conversational Assistance Track results — (h2oloo) University of Waterloo (Lin)

| Run Description | |
|----------------------------|--|
| Run ID | h2oloo_RUN4 |
| Topic type | Automatic |
| Conversation Understanding | deep learning; CAS T Y1 annotated evaluation dataset; data provided by the MS MARCO Conversational Session dataset |
| Ranking Features | learning-to-rank; deep learning; trained on external MS MARCO dataset |
| Context Features | topic title |

| Overall measures | |
|--------------------------|--------|
| Number of topics | 173 |
| Total number retrieved | 160099 |
| Total relevant | 8120 |
| Total relevant retrieved | 5397 |
| MAP @ 5 | 0.0806 |
| Mean NDCG @ 5 | 0.5319 |
| Mean NDCG @ 1000 | 0.5411 |

| Document Level Averages | |
|-------------------------|-----------|
| | Precision |
| At 5 docs | 0.6948 |
| At 10 docs | 0.6601 |
| At 15 docs | 0.5707 |
| At 20 docs | 0.5046 |
| At 30 docs | 0.4133 |



Per-topic difference from median NDCG@1000