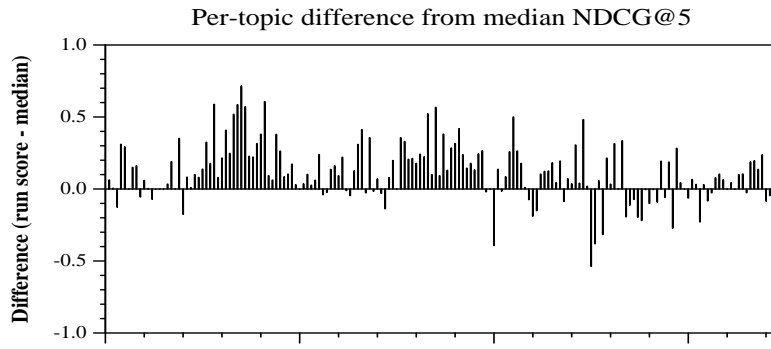
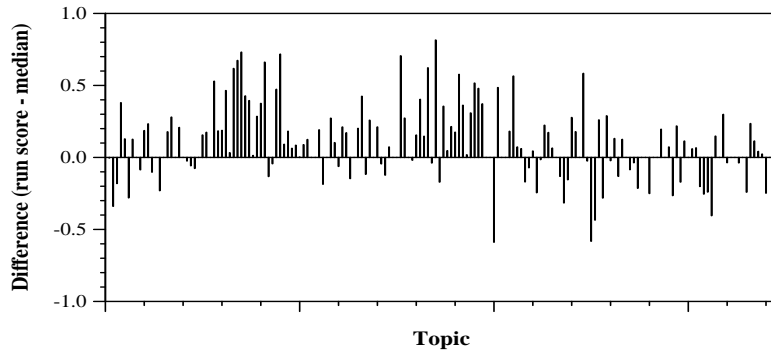
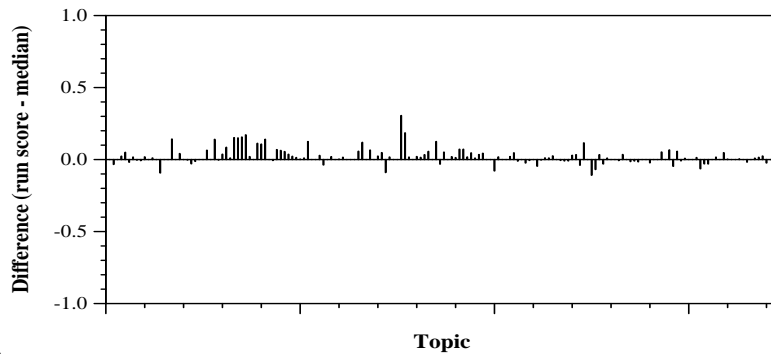
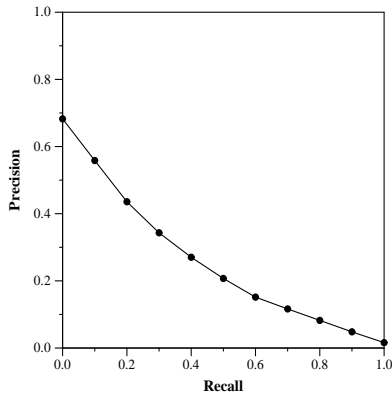


Conversational Assistance Track results — (WaterlooClarke) University of Waterloo (Clarke)

Run Description	
Run ID	clacBase
Topic type	Automatic
Conversation Understanding	heuristic rules; NLP toolkit; coreference resolution
Ranking Features	unsupervised
Context Features	previous turns

Overall measures	
Number of topics	173
Total number retrieved	163717
Total relevant	8120
Total relevant retrieved	5724
MAP @ 5	0.0519
Mean NDCG @ 5	0.3504
Mean NDCG @ 1000	0.4712

Document Level Averages	
	Precision
At 5 docs	0.5156
At 10 docs	0.5052
At 15 docs	0.4478
At 20 docs	0.4058
At 30 docs	0.3509



Per-topic difference from median NDCG@1000