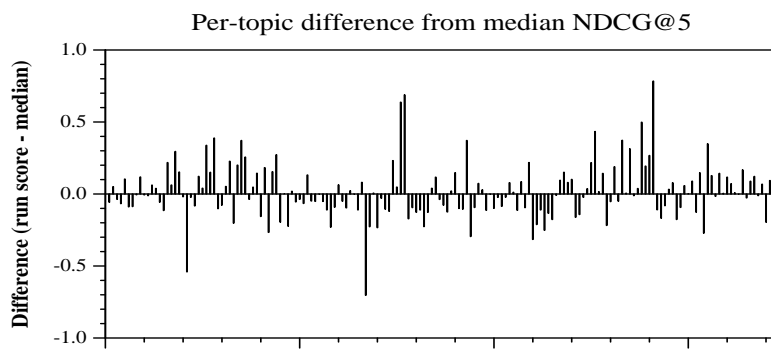
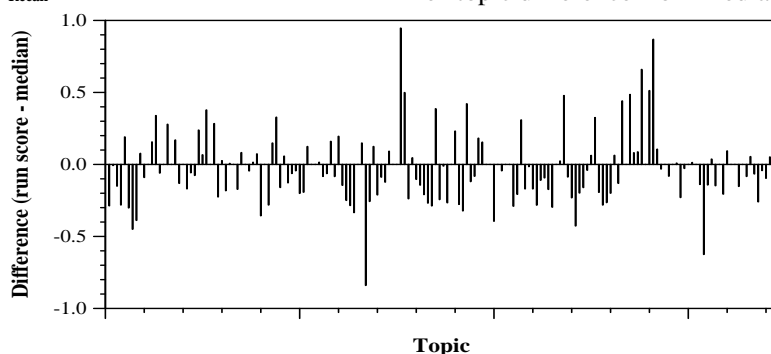
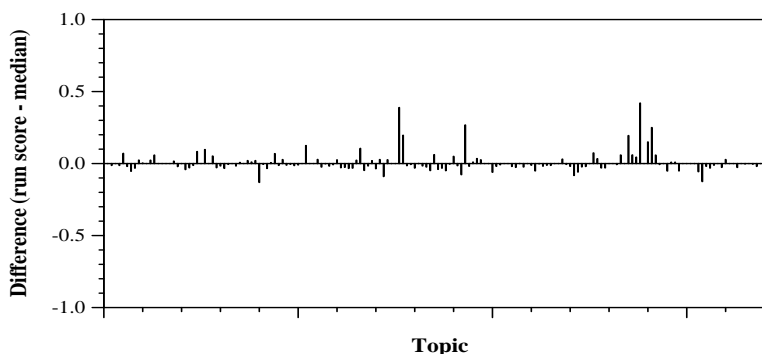
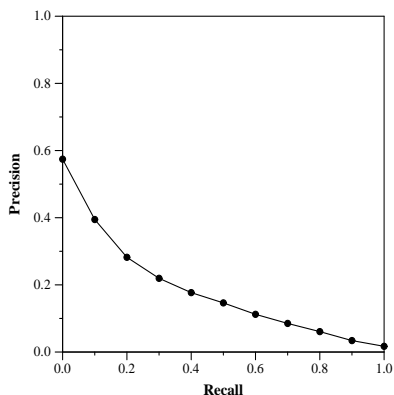


Conversational Assistance Track results — (ECNU-ICA) East China Normal University - ICA

Run Description	
Run ID	ECNUICA_MIX
Topic type	Automatic
Conversation Understanding	NLP toolkit; entity linking; coreference resolution; deep learning
Ranking Features	deep learning
Context Features	topic description

Overall measures	
Number of topics	173
Total number retrieved	157324
Total relevant	8120
Total relevant retrieved	4855
MAP @ 5	0.0404
Mean NDCG @ 5	0.2349
Mean NDCG @ 1000	0.3774

Document Level Averages	
	Precision
At 5 docs	0.3827
At 10 docs	0.3590
At 15 docs	0.3102
At 20 docs	0.2803
At 30 docs	0.2387



Per-topic difference from median NDCG@1000