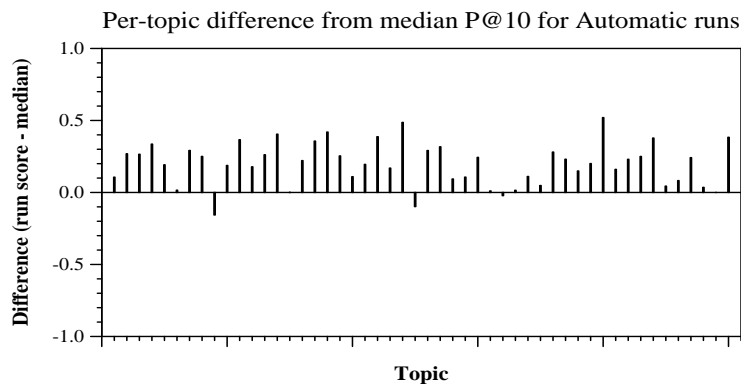
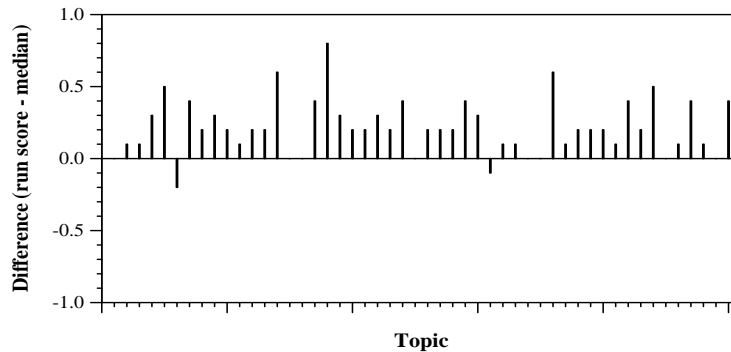
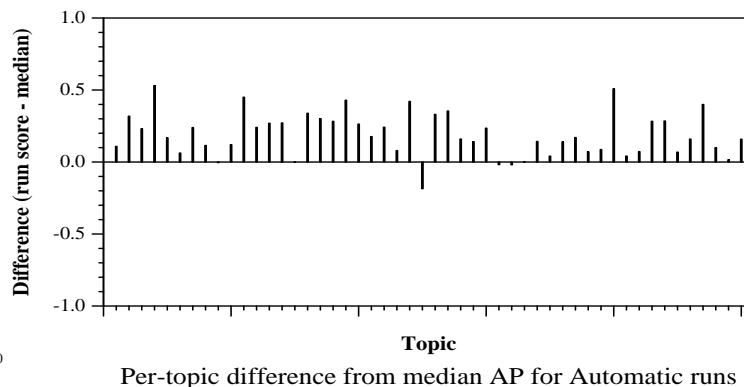
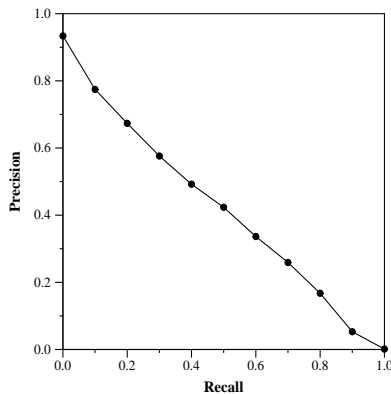


| Summary Statistics | |
|------------------------------------|-----------------|
| Run ID | sabmerge50aqv45 |
| Topic type | automatic |
| Round submitted | two |
| Used existing judgments? | yes |
| Contributed to NIST judgment sets? | no |

| Overall measures | |
|--------------------------|--------|
| Number of topics | 50 |
| Total number retrieved | 50000 |
| Total relevant | 9002 |
| Total relevant retrieved | 6396 |
| MAP | 0.4157 |
| Mean NDCG | 0.6762 |

| Document Level Averages | |
|-------------------------|-----------|
| | Precision |
| At 5 docs | 0.7880 |
| At 10 docs | 0.7620 |
| At 15 docs | 0.7427 |
| At 20 docs | 0.7220 |
| At 30 docs | 0.6667 |

| R-Precision | |
|-------------|--------|
| Exact | 0.4475 |



Per-topic difference from median NDCG for Automatic runs