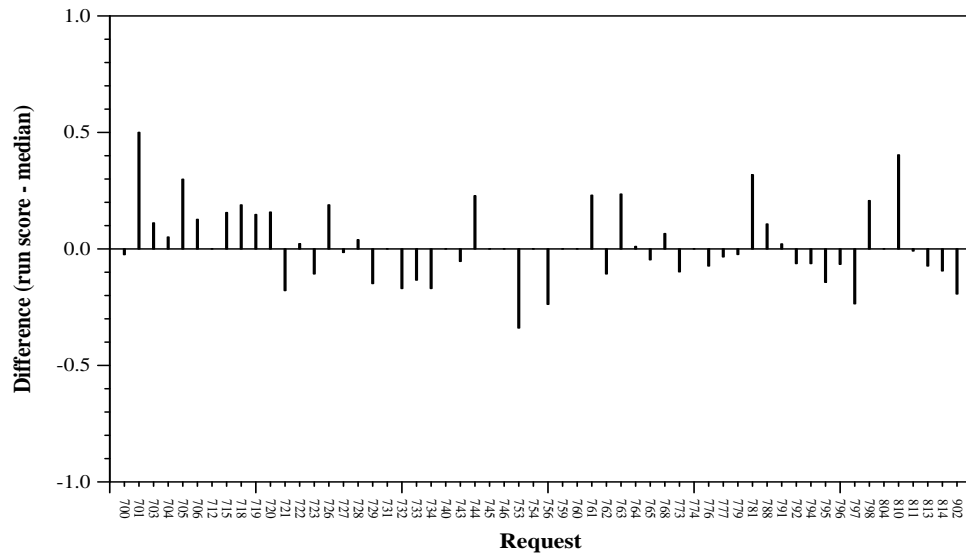
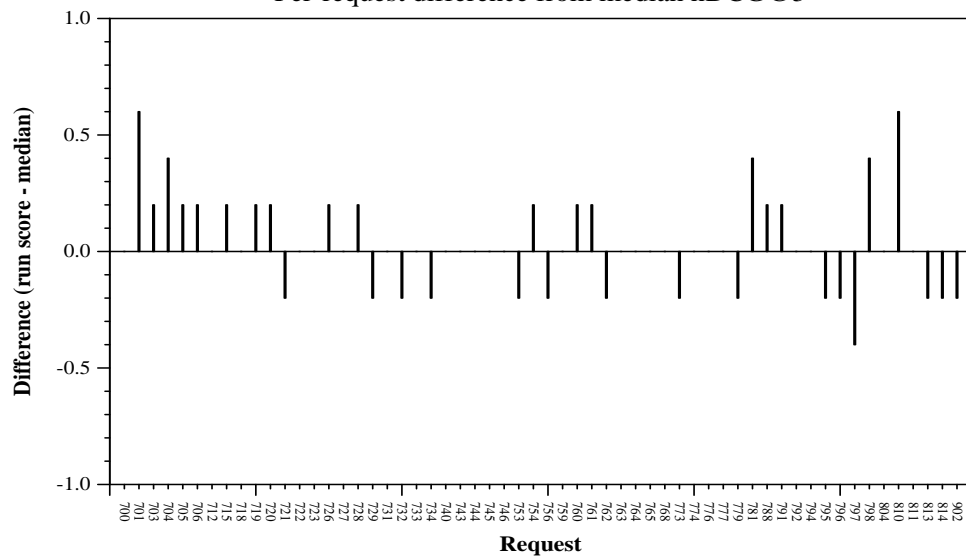


| Summary Statistics | |
|------------------------------|---------------|
| Run ID | ADAPT_TCD_br1 |
| Task | Phase 2 |
| Used secondary data sources? | Yes |
| Number of topics | 58 |

| Overall measures | |
|----------------------|--------|
| Mean nDCG @ 5 | 0.2720 |
| Mean Prec@5 | 0.4241 |
| Mean reciprocal rank | 0.5472 |



Per-request difference from median nDCG@5



Per-request difference from median P@5