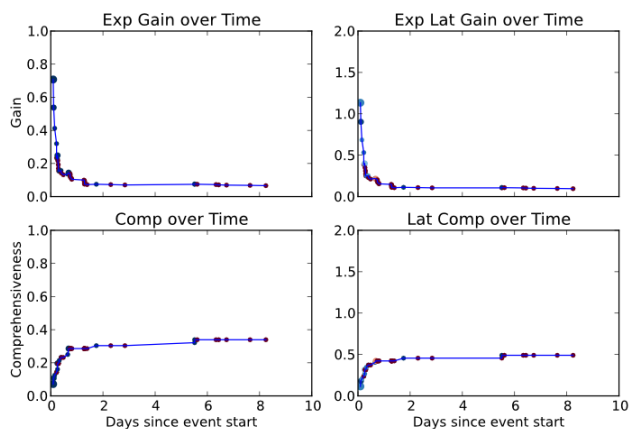


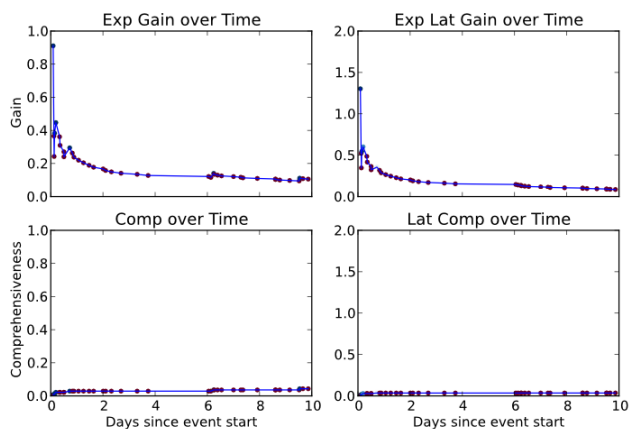
## Temporal Summarization Track results — PRIS-cluster3

QueryID	E[Gain]	E[Latency Gain]	Comprehensiveness	Latency Comp.	E[Verbosity]
1	0.07 (+0.01)	0.10 (+0.02)	0.34 (-0.08)	0.49 (-0.05)	6.68 (-4.55)
2	0.10 (+0.07)	0.19 (+0.12)	0.07 (-0.14)	0.12 (-0.19)	2.61 (-8.84)
3	0.11 (+0.00)	0.09 (-0.01)	0.04 (-0.07)	0.04 (-0.07)	1.42 (-1.37)
4	0.11 (+0.03)	0.11 (+0.04)	0.03 (-0.19)	0.03 (-0.20)	1.55 (-2.10)
5	0 (-0.0)	0 (-0.0)	0 (-0.1)	0 (-0.0)	1.82 (-3.01)
6	0.32 (+0.25)	0.16 (+0.12)	0.06 (-0.02)	0.03 (-0.02)	1.93 (-4.31)
8	0.07 (+0.02)	0.08 (+0.03)	0.06 (-0.21)	0.07 (-0.21)	1.88 (-3.13)
9	0.06 (+0.03)	0.08 (+0.04)	0.18 (-0.12)	0.23 (-0.18)	3.15 (-6.00)
10	0.09 (+0.03)	0.13 (+0.04)	0.41 (-0.02)	0.58 (-0.07)	2.78 (-3.96)
AVG	0.10 (+0.05)	0.10 (+0.04)	0.13 (-0.10)	0.18 (-0.11)	2.65 (-4.14)

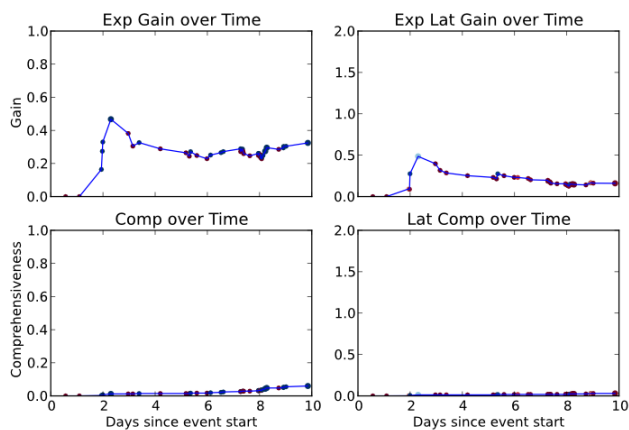
Evaluation Metrics for all queries and mean over all queries. Value in parentheses is difference from the track mean. Expected Gain is a form of precision, Comprehensiveness a form of recall. Latency versions of metrics account for time delay between gold standard information and update (updates before gold standard time allows for metric value > 1).



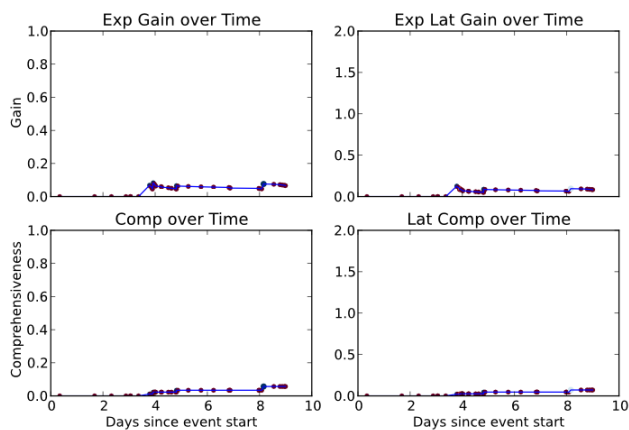
(a) Query 1



(b) Query 3



(c) Query 6



(d) Query 8