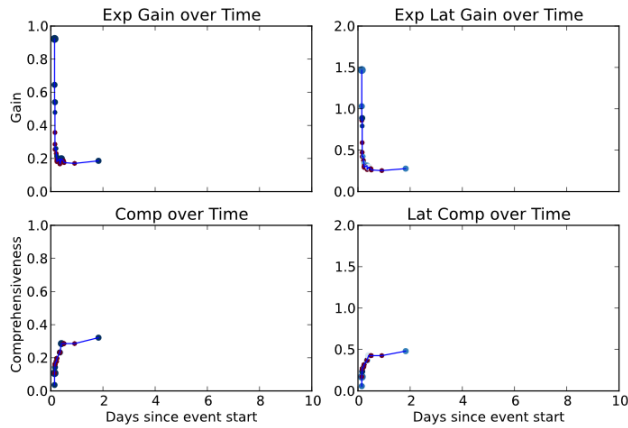


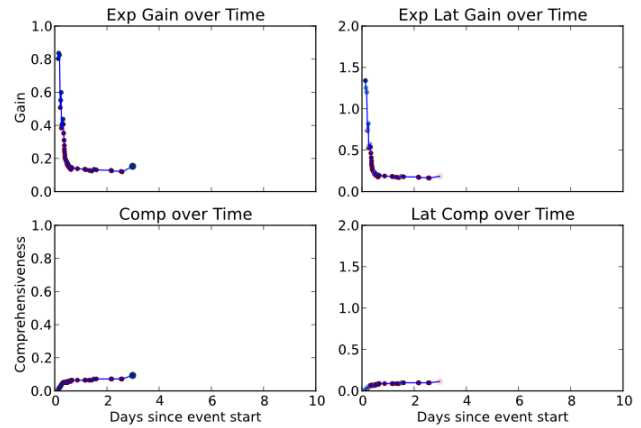
## Temporal Summarization Track results — ICTNET-run1

QueryID	E[Gain]	E[Latency Gain]	Comprehensiveness	Latency Comp.	E[Verbosity]
1	0.19 (+0.13)	0.28 (+0.20)	0.32 (-0.10)	0.48 (-0.06)	4.21 (-7.03)
2	0.05 (+0.01)	0.10 (+0.03)	0.17 (-0.04)	0.32 (+0.00)	4.48 (-6.97)
3	0.15 (+0.05)	0.19 (+0.09)	0.09 (-0.02)	0.11 (+0.00)	2.03 (-0.77)
4	0.11 (+0.04)	0.14 (+0.07)	0.16 (-0.05)	0.21 (-0.02)	2.81 (-0.83)
5	0.04 (+0.02)	0.01 (+0.01)	0.08 (+0.03)	0.02 (+0.02)	3.27 (-1.55)
6	0.10 (+0.03)	0.06 (+0.02)	0.09 (+0.01)	0.05 (-0.00)	3.85 (-2.38)
8	0.10 (+0.05)	0.10 (+0.05)	0.24 (-0.02)	0.24 (-0.04)	2.61 (-2.41)
9	0.06 (+0.03)	0.08 (+0.05)	0.40 (+0.10)	0.54 (+0.13)	4.53 (-4.62)
10	0.11 (+0.05)	0.18 (+0.09)	0.19 (-0.24)	0.31 (-0.35)	4.26 (-2.48)
AVG	0.10 (+0.05)	0.12 (+0.07)	0.19 (-0.04)	0.25 (-0.04)	3.56 (-3.23)

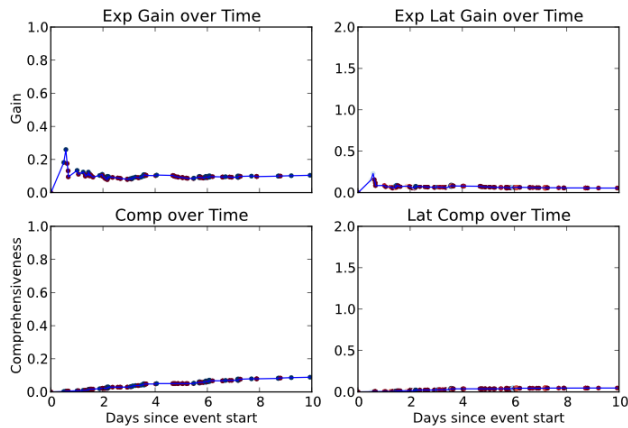
Evaluation Metrics for all queries and mean over all queries. Value in parentheses is difference from the track mean. Expected Gain is a form of precision, Comprehensiveness a form of recall. Latency versions of metrics account for time delay between gold standard information and update (updates before gold standard time allows for metric value > 1).



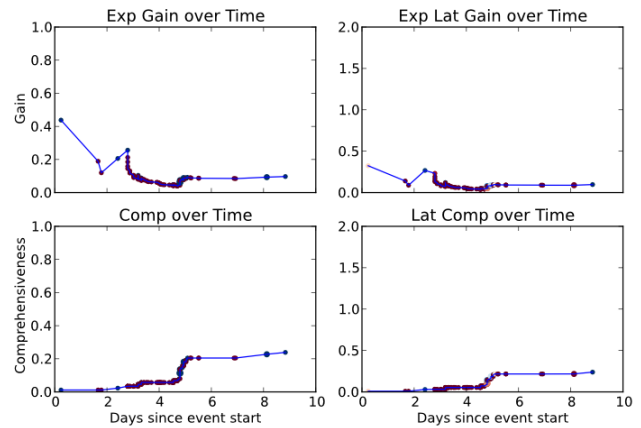
(a) Query 1



(b) Query 3



(c) Query 6



(d) Query 8