

TREC 2012 Crowdsourcing Track, Text Relevance Assessing Task (TRAT) results

Group: (NEU) Northeastern University

Run ID: NEUNugget12

Run type: Primary

Description of run:

1 assessor takes about 45 min/query to judge documents and nuggets (extracted automatically from relevant documents) in an iterative process. When done, all documents are ranked given their match with the assessed nuggets.

Results

Topic	#Docs	#Rel	TP	TN	FP	FN	TPR	TNR	FPR	FNR	LAM	AUC
411	2056	27	11	2003	26	16	0.411	0.987	0.013	0.589	0.121	0.860
416	1235	45	10	1163	27	35	0.228	0.977	0.023	0.772	0.220	0.868
417	2992	75	13	2903	14	62	0.178	0.995	0.005	0.822	0.132	0.686
420	1136	37	15	1070	29	22	0.408	0.973	0.027	0.592	0.167	0.865
427	1528	37	8	1468	23	29	0.224	0.984	0.016	0.776	0.191	0.798
432	2503	22	2	2377	104	20	0.109	0.958	0.042	0.891	0.375	0.580
438	1798	162	11	1559	77	151	0.071	0.953	0.047	0.929	0.447	0.762
445	1404	60	42	1288	56	18	0.697	0.958	0.042	0.303	0.121	0.891
446	2020	156	35	1790	74	121	0.226	0.960	0.040	0.774	0.274	0.707
447	1588	16	7	1563	9	9	0.441	0.994	0.006	0.559	0.081	0.464
Average	1826.000	63.700	15.400	1718.400	43.900	48.300	0.299	0.974	0.026	0.701	0.213	0.748

Table 1: This table shows per-topic statistics and overall averages for the run NEUNugget12. The topics are 10 randomly selected topics from the TREC 8 ad-hoc task. A relevant document is positive and a non-relevant document is negative. The true positive (TP), true negative (TN), false positive (FP), and false negative (FN) counts are based on an adjudicated set of relevance judgments that differs from the original TREC-8 ad-hoc qrels. The true positive rate (TPR), false positive rate (FPR), true negative rate (TNR), and the false negative rate (FNR) are all smoothed values. Details of the computation of the logistic average misclassification (LAM) rate and the area under the curve (AUC) are given in the track overview paper. Some runs did not report a probability of relevance and thus will have NA for their AUC score.

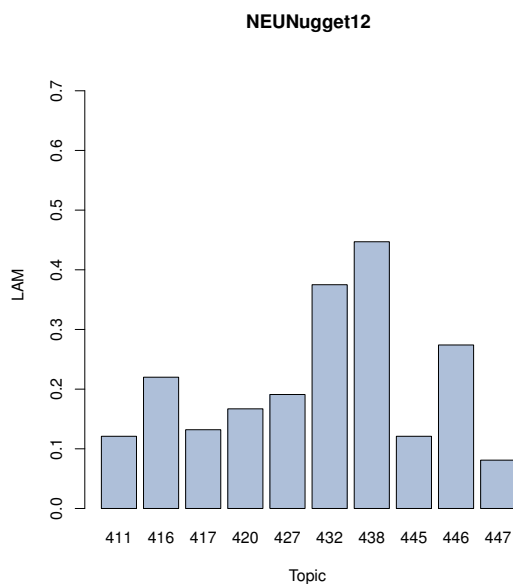


Figure 1: NEUNugget12 LAM

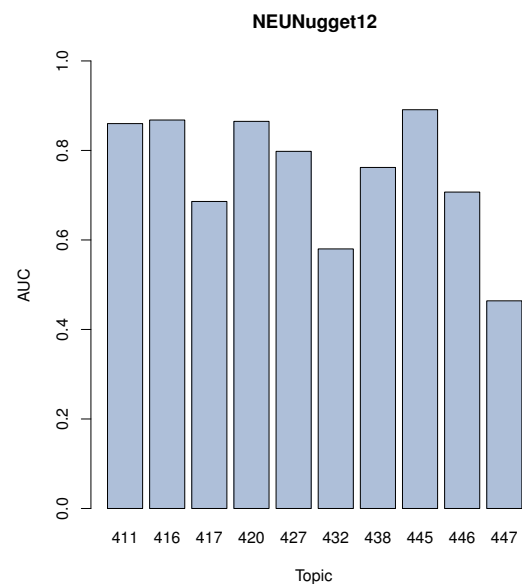


Figure 2: NEUNugget12 AUC