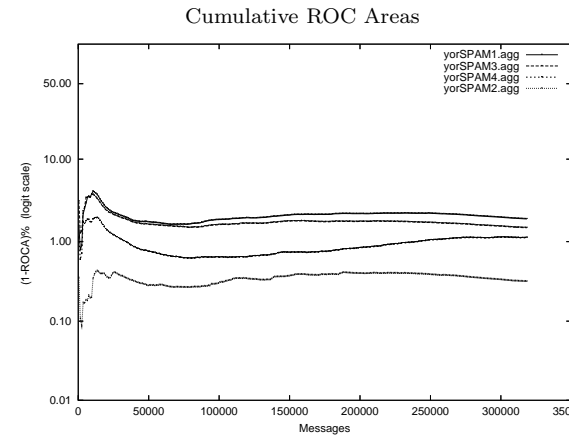
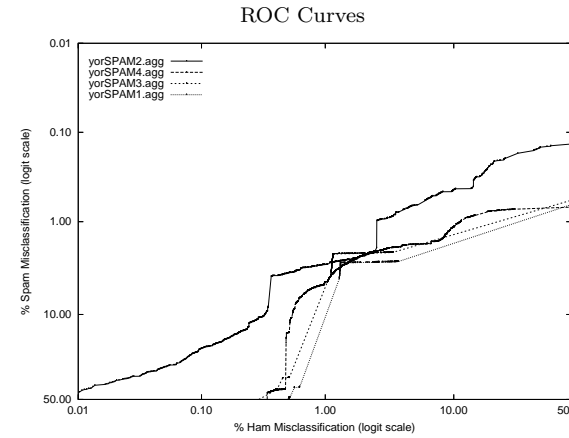


# yor - York U. on Aggregate of full, mrx, sb, tm Corpus

Gold Std. Filter Classification	yorSPAM1.agg		yorSPAM2.agg		yorSPAM3.agg		yorSPAM4.agg	
	ham spam	ham spam	ham spam	ham spam	ham spam	ham spam	ham spam	ham spam
	202637	3222	204579	4423	202978	2595	202710	3367
	2716	109907	779	108701	2380	110529	2643	109762
Ham Misc%	1.32 (1.27-1.37)		0.38 (0.35-0.41)		1.16 (1.11-1.21)		1.29 (1.24-1.34)	
Spam Misc%	2.85 (2.75-2.95)		3.91 (3.80-4.02)		2.29 (2.21-2.38)		2.98 (2.88-3.08)	
Logit av Misc%	1.94 (1.90-1.99)		1.23 (1.18-1.28)		1.63 (1.59-1.68)		1.96 (1.91-2.01)	
(1-ROCA)%	1.917 (1.856 - 1.981)		0.316 (0.294 - 0.339)		1.491 (1.443 - 1.540)		1.122 (1.073 - 1.174)	
Ham Misc%	Spam Misc%							
0.01	95.73 (94.72 - 96.56)		45.69 (39.81 - 51.68)		88.46 (86.51 - 90.15)		96.07 (95.33 - 96.69)	
0.02	93.66 (92.57 - 94.60)		38.44 (35.81 - 41.13)		85.55 (83.49 - 87.40)		94.60 (93.74 - 95.35)	
0.05	89.95 (88.77 - 91.02)		30.41 (28.58 - 32.29)		78.42 (76.98 - 79.79)		89.26 (87.48 - 90.80)	
0.10	84.38 (83.24 - 85.45)		21.14 (19.67 - 22.68)		70.88 (68.45 - 73.19)		81.80 (80.27 - 83.24)	
0.20	73.95 (72.11 - 75.70)		15.13 (14.10 - 16.22)		60.10 (56.49 - 63.60)		68.38 (67.64 - 69.10)	
0.50	49.81 (47.76 - 51.87)		3.67 (3.53 - 3.82)		36.45 (35.62 - 37.29)		15.22 (5.92 - 33.88)	
1.00	20.87 (18.82 - 23.09)		2.96 (2.86 - 3.08)		10.33 (8.11 - 13.08)		4.60 (4.31 - 4.92)	
2.00	2.82 (2.72 - 2.92)		2.40 (2.31 - 2.49)		2.24 (2.17 - 2.31)		2.37 (2.26 - 2.49)	
5.00	2.71 (2.61 - 2.81)		0.66 (0.62 - 0.71)		2.14 (2.06 - 2.22)		1.80 (1.70 - 1.89)	
10.00	2.55 (2.45 - 2.65)		0.44 (0.41 - 0.48)		2.02 (1.95 - 2.10)		1.15 (1.08 - 1.22)	
20.00	2.23 (2.14 - 2.32)		0.21 (0.18 - 0.24)		1.78 (1.71 - 1.86)		0.76 (0.71 - 0.80)	
50.00	1.38 (1.32 - 1.46)		0.13 (0.11 - 0.16)		1.09 (1.04 - 1.15)		0.68 (0.63 - 0.72)	
Spam Misc%	Ham Misc%							
0.01	98.15 (96.85 - 98.92)		99.94 (99.91 - 99.96)		97.52 (96.45 - 98.27)		99.96 (99.92 - 99.98)	
0.02	97.33 (96.82 - 97.75)		99.93 (99.92 - 99.94)		96.63 (95.98 - 97.18)		99.93 (99.89 - 99.96)	
0.05	95.67 (95.08 - 96.20)		99.93 (99.92 - 99.94)		94.80 (93.99 - 95.51)		99.83 (99.77 - 99.88)	
0.10	94.16 (93.62 - 94.66)		99.93 (94.04 - 100.00)		92.89 (92.23 - 93.50)		99.66 (99.59 - 99.73)	
0.20	91.40 (90.61 - 92.13)		22.22 (17.91 - 27.22)		89.11 (88.10 - 90.05)		99.26 (99.15 - 99.36)	
0.50	81.00 (79.42 - 82.48)		7.58 (6.58 - 8.71)		76.62 (74.70 - 78.43)		98.20 (98.03 - 98.35)	
1.00	64.18 (62.09 - 66.22)		2.57 (2.44 - 2.71)		54.84 (52.49 - 57.16)		11.21 (10.60 - 11.85)	
2.00	28.94 (26.27 - 31.76)		2.54 (2.46 - 2.62)		11.01 (8.09 - 14.80)		3.08 (2.57 - 3.69)	
5.00	1.28 (1.24 - 1.33)		0.36 (0.33 - 0.39)		1.09 (1.04 - 1.13)		0.93 (0.85 - 1.02)	
10.00	1.20 (1.16 - 1.25)		0.33 (0.30 - 0.35)		1.01 (0.96 - 1.05)		0.54 (0.51 - 0.58)	
20.00	1.02 (0.98 - 1.06)		0.12 (0.11 - 0.14)		0.82 (0.78 - 0.86)		0.49 (0.45 - 0.52)	
50.00	0.50 (0.47 - 0.53)		0.01 (0.00 - 0.01)		0.30 (0.28 - 0.33)		0.34 (0.32 - 0.37)	



## Learning Curves

