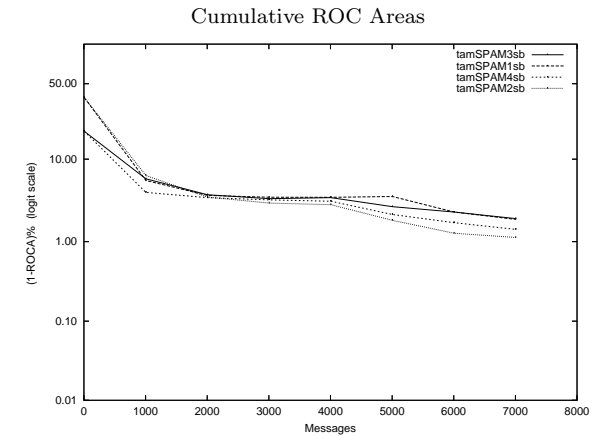
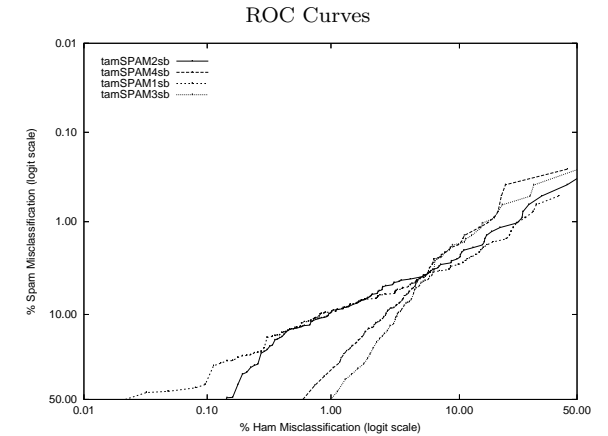


# tam - Massey University on Private S.B. Corpus

Gold Std. Filter Classification	tamSPAM1sb		tamSPAM2sb		tamSPAM3sb		tamSPAM4sb	
	ham spam	ham spam	ham spam	ham spam	ham spam	ham spam	ham spam	ham spam
Ham Misc%	0.14 (0.07-0.27)		1.04 (0.81-1.33)		6.29 (5.70-6.92)		3.92 (3.45-4.43)	
Spam Misc%	27.48 (24.37-30.77)		9.29 (7.34-11.56)		3.64 (2.43-5.21)		6.19 (4.60-8.13)	
Logit av Misc%	2.29 (1.65-3.17)		3.18 (2.69-3.76)		4.79 (3.97-5.76)		4.93 (4.23-5.73)	
(1-ROCA)%	1.892 (1.321 - 2.701)		1.127 (0.757 - 1.673)		1.934 (1.539 - 2.429)		1.421 (1.140 - 1.772)	
Ham Misc%	Spam Misc%							
0.01	53.81 (47.29 - 60.19)	88.77 (84.05 - 92.23)	99.35 (nan - nan)	98.71 (nan - nan)	98.71 (nan - nan)	98.71 (nan - nan)	98.71 (nan - nan)	98.71 (nan - nan)
0.02	53.42 (43.15 - 63.40)	84.90 (74.49 - 91.55)	98.57 (nan - nan)	97.16 (nan - nan)	98.57 (nan - nan)	97.16 (nan - nan)	97.16 (nan - nan)	97.16 (nan - nan)
0.05	44.77 (32.37 - 57.86)	84.00 (62.41 - 94.32)	98.57 (nan - nan)	96.13 (nan - nan)	98.57 (nan - nan)	96.13 (nan - nan)	96.13 (nan - nan)	96.13 (nan - nan)
0.10	40.52 (24.81 - 58.43)	66.06 (32.21 - 88.86)	96.49 (92.05 - 98.49)	89.68 (77.23 - 95.70)	96.49 (92.05 - 98.49)	89.68 (77.23 - 95.70)	89.68 (77.23 - 95.70)	89.68 (77.23 - 95.70)
0.20	24.52 (17.82 - 32.73)	34.19 (16.45 - 57.83)	91.43 (83.46 - 95.75)	81.94 (69.78 - 89.91)	91.43 (83.46 - 95.75)	81.94 (69.78 - 89.91)	81.94 (69.78 - 89.91)	81.94 (69.78 - 89.91)
0.50	13.94 (10.50 - 18.27)	13.94 (10.40 - 18.42)	74.55 (61.60 - 84.24)	62.06 (44.96 - 76.62)	74.55 (61.60 - 84.24)	62.06 (44.96 - 76.62)	62.06 (44.96 - 76.62)	62.06 (44.96 - 76.62)
1.00	9.55 (7.62 - 11.89)	9.68 (7.21 - 12.87)	50.13 (39.62 - 60.63)	31.87 (23.28 - 41.90)	50.13 (39.62 - 60.63)	31.87 (23.28 - 41.90)	31.87 (23.28 - 41.90)	31.87 (23.28 - 41.90)
2.00	6.97 (5.58 - 8.67)	6.71 (5.07 - 8.83)	24.81 (18.14 - 32.94)	13.81 (10.48 - 17.97)	24.81 (18.14 - 32.94)	13.81 (10.48 - 17.97)	13.81 (10.48 - 17.97)	13.81 (10.48 - 17.97)
5.00	4.26 (3.10 - 5.82)	4.26 (2.89 - 6.23)	5.06 (3.63 - 7.02)	4.13 (2.82 - 6.01)	5.06 (3.63 - 7.02)	4.13 (2.82 - 6.01)	4.13 (2.82 - 6.01)	4.13 (2.82 - 6.01)
10.00	3.10 (2.17 - 4.40)	2.58 (1.53 - 4.31)	1.82 (1.03 - 3.20)	1.81 (1.08 - 3.02)	1.82 (1.03 - 3.20)	1.81 (1.08 - 3.02)	1.81 (1.08 - 3.02)	1.81 (1.08 - 3.02)
20.00	2.32 (1.53 - 3.52)	1.16 (0.56 - 2.41)	0.65 (0.23 - 1.78)	0.39 (0.10 - 1.42)	0.65 (0.23 - 1.78)	0.39 (0.10 - 1.42)	0.39 (0.10 - 1.42)	0.39 (0.10 - 1.42)
50.00	1.68 (0.97 - 2.90)	0.39 (0.11 - 1.34)	0.26 (0.06 - 1.04)	0.26 (0.07 - 0.98)	0.26 (0.06 - 1.04)	0.26 (0.07 - 0.98)	0.26 (0.07 - 0.98)	0.26 (0.07 - 0.98)
Spam Misc%	Ham Misc%							
0.01	100.00 (nan - nan)	100.00 (nan - nan)	100.00 (nan - nan)	100.00 (nan - nan)	100.00 (nan - nan)	100.00 (nan - nan)	100.00 (nan - nan)	100.00 (nan - nan)
0.02	100.00 (nan - nan)	100.00 (nan - nan)	100.00 (nan - nan)	100.00 (nan - nan)	100.00 (nan - nan)	100.00 (nan - nan)	100.00 (nan - nan)	100.00 (nan - nan)
0.05	100.00 (nan - nan)	100.00 (nan - nan)	100.00 (nan - nan)	100.00 (nan - nan)	100.00 (nan - nan)	100.00 (nan - nan)	100.00 (nan - nan)	100.00 (nan - nan)
0.10	99.25 (nan - nan)	93.47 (72.01 - 98.76)	96.41 (50.96 - 99.86)	58.39 (23.06 - 86.78)	96.41 (50.96 - 99.86)	58.39 (23.06 - 86.78)	58.39 (23.06 - 86.78)	58.39 (23.06 - 86.78)
0.20	97.90 (80.15 - 99.81)	90.50 (43.46 - 99.16)	78.56 (20.33 - 98.13)	54.16 (20.27 - 84.60)	78.56 (20.33 - 98.13)	54.16 (20.27 - 84.60)	54.16 (20.27 - 84.60)	54.16 (20.27 - 84.60)
0.50	89.10 (66.92 - 97.06)	45.43 (12.68 - 82.68)	30.79 (6.41 - 74.30)	19.74 (6.94 - 44.77)	30.79 (6.41 - 74.30)	19.74 (6.94 - 44.77)	19.74 (6.94 - 44.77)	19.74 (6.94 - 44.77)
1.00	74.05 (45.02 - 90.86)	26.38 (13.42 - 45.32)	17.43 (9.19 - 30.57)	16.61 (10.22 - 25.85)	17.43 (9.19 - 30.57)	16.61 (10.22 - 25.85)	16.61 (10.22 - 25.85)	16.61 (10.22 - 25.85)
2.00	30.25 (8.43 - 67.14)	12.52 (6.94 - 21.55)	8.32 (5.20 - 13.06)	8.57 (5.52 - 13.08)	8.32 (5.20 - 13.06)	8.57 (5.52 - 13.08)	8.57 (5.52 - 13.08)	8.57 (5.52 - 13.08)
5.00	4.25 (2.81 - 6.39)	3.08 (1.57 - 5.97)	5.07 (3.99 - 6.42)	4.67 (3.64 - 5.98)	5.07 (3.99 - 6.42)	4.67 (3.64 - 5.98)	4.67 (3.64 - 5.98)	4.67 (3.64 - 5.98)
10.00	0.82 (0.51 - 1.32)	0.96 (0.59 - 1.56)	3.35 (2.82 - 3.98)	2.74 (2.18 - 3.45)	3.35 (2.82 - 3.98)	2.74 (2.18 - 3.45)	2.74 (2.18 - 3.45)	2.74 (2.18 - 3.45)
20.00	0.30 (0.18 - 0.51)	0.34 (0.21 - 0.54)	2.25 (1.89 - 2.66)	1.48 (1.13 - 1.92)	2.25 (1.89 - 2.66)	1.48 (1.13 - 1.92)	1.48 (1.13 - 1.92)	1.48 (1.13 - 1.92)
50.00	0.03 (0.01 - 0.12)	0.14 (0.07 - 0.31)	1.01 (0.77 - 1.33)	0.61 (0.43 - 0.86)	1.01 (0.77 - 1.33)	0.61 (0.43 - 0.86)	0.61 (0.43 - 0.86)	0.61 (0.43 - 0.86)



## Learning Curves

