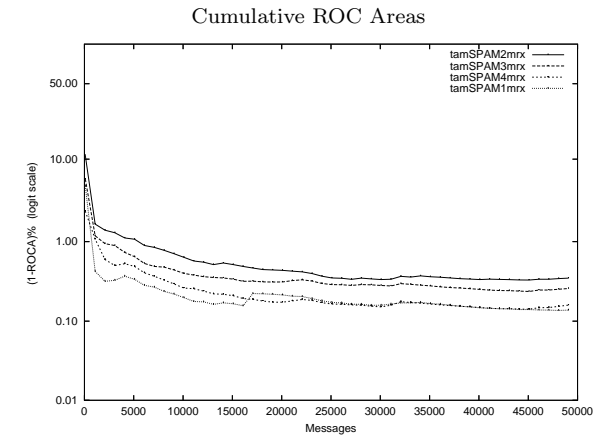
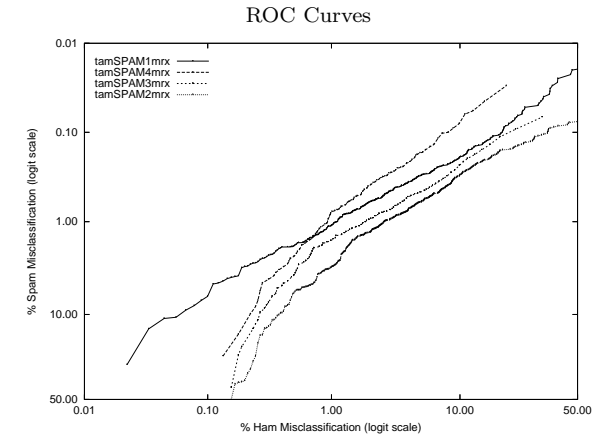


tam - Massey University on Private Mr X. Corpus

Gold Std. Filter Classification	tamSPAM1mrx		tamSPAM2mrx		tamSPAM3mrx		tamSPAM4mrx	
	ham spam	ham spam	ham spam	ham spam	ham spam	ham spam	ham spam	ham spam
Ham Misc%	0.28 (0.18-0.41)		1.43 (1.19-1.69)		0.82 (0.64-1.03)		0.96 (0.77-1.19)	
Spam Misc%	2.55 (2.39-2.71)		1.75 (1.63-1.89)		1.85 (1.72-1.98)		0.89 (0.80-0.98)	
Logit av Misc%	0.84 (0.69-1.03)		1.58 (1.44-1.74)		1.23 (1.09-1.39)		0.92 (0.82-1.04)	
(1-ROCA)%	0.138 (0.111 - 0.171)		0.349 (0.285 - 0.426)		0.257 (0.195 - 0.340)		0.159 (0.110 - 0.229)	
Ham Misc%	Spam Misc%							
0.01	45.65 (12.84 - 82.73)	98.21 (90.76 - 99.67)	97.03 (78.07 - 99.67)	90.01 (63.14 - 97.93)	90.01 (63.14 - 97.93)	90.01 (63.14 - 97.93)	90.01 (63.14 - 97.93)	90.01 (63.14 - 97.93)
0.02	40.96 (11.14 - 79.34)	97.44 (90.41 - 99.36)	89.09 (65.35 - 97.25)	85.85 (59.75 - 96.12)	85.85 (59.75 - 96.12)	85.85 (59.75 - 96.12)	85.85 (59.75 - 96.12)	85.85 (59.75 - 96.12)
0.05	10.97 (3.17 - 31.66)	91.09 (74.40 - 97.29)	84.26 (57.27 - 95.53)	79.43 (47.59 - 94.26)	79.43 (47.59 - 94.26)	79.43 (47.59 - 94.26)	79.43 (47.59 - 94.26)	79.43 (47.59 - 94.26)
0.10	6.51 (3.01 - 13.51)	78.36 (44.65 - 94.20)	58.80 (28.22 - 83.82)	46.24 (14.81 - 80.98)	46.24 (14.81 - 80.98)	46.24 (14.81 - 80.98)	46.24 (14.81 - 80.98)	46.24 (14.81 - 80.98)
0.20	3.12 (2.07 - 4.67)	38.08 (15.33 - 67.63)	20.17 (5.61 - 51.80)	13.48 (4.37 - 34.66)	13.48 (4.37 - 34.66)	13.48 (4.37 - 34.66)	13.48 (4.37 - 34.66)	13.48 (4.37 - 34.66)
0.50	1.86 (1.54 - 2.23)	6.00 (3.88 - 9.17)	3.72 (2.43 - 5.67)	2.38 (1.63 - 3.47)	2.38 (1.63 - 3.47)	2.38 (1.63 - 3.47)	2.38 (1.63 - 3.47)	2.38 (1.63 - 3.47)
1.00	1.10 (0.88 - 1.39)	3.17 (2.50 - 4.01)	1.57 (1.34 - 1.85)	0.77 (0.57 - 1.05)	0.77 (0.57 - 1.05)	0.77 (0.57 - 1.05)	0.77 (0.57 - 1.05)	0.77 (0.57 - 1.05)
2.00	0.61 (0.50 - 0.74)	1.33 (1.15 - 1.53)	0.94 (0.80 - 1.10)	0.40 (0.32 - 0.49)	0.40 (0.32 - 0.49)	0.40 (0.32 - 0.49)	0.40 (0.32 - 0.49)	0.40 (0.32 - 0.49)
5.00	0.31 (0.26 - 0.38)	0.61 (0.54 - 0.69)	0.47 (0.40 - 0.55)	0.17 (0.13 - 0.22)	0.17 (0.13 - 0.22)	0.17 (0.13 - 0.22)	0.17 (0.13 - 0.22)	0.17 (0.13 - 0.22)
10.00	0.19 (0.15 - 0.24)	0.30 (0.26 - 0.36)	0.23 (0.19 - 0.29)	0.07 (0.05 - 0.11)	0.07 (0.05 - 0.11)	0.07 (0.05 - 0.11)	0.07 (0.05 - 0.11)	0.07 (0.05 - 0.11)
20.00	0.12 (0.09 - 0.16)	0.16 (0.12 - 0.20)	0.11 (0.08 - 0.15)	0.03 (0.02 - 0.06)	0.03 (0.02 - 0.06)	0.03 (0.02 - 0.06)	0.03 (0.02 - 0.06)	0.03 (0.02 - 0.06)
50.00	0.08 (0.06 - 0.11)	0.08 (0.05 - 0.11)	0.05 (0.03 - 0.08)	0.02 (0.01 - 0.05)	0.02 (0.01 - 0.05)	0.02 (0.01 - 0.05)	0.02 (0.01 - 0.05)	0.02 (0.01 - 0.05)
Spam Misc%	Ham Misc%							
0.01	90.76 (78.75 - 96.30)	86.01 (73.71 - 93.10)	88.17 (70.56 - 95.87)	78.26 (45.29 - 93.99)	78.26 (45.29 - 93.99)	78.26 (45.29 - 93.99)	78.26 (45.29 - 93.99)	78.26 (45.29 - 93.99)
0.02	87.76 (76.43 - 94.07)	83.37 (73.49 - 90.07)	76.48 (58.99 - 88.02)	48.97 (18.58 - 80.15)	48.97 (18.58 - 80.15)	48.97 (18.58 - 80.15)	48.97 (18.58 - 80.15)	48.97 (18.58 - 80.15)
0.05	74.12 (59.53 - 84.80)	65.06 (51.19 - 76.77)	55.81 (35.81 - 74.09)	13.20 (8.63 - 19.66)	13.20 (8.63 - 19.66)	13.20 (8.63 - 19.66)	13.20 (8.63 - 19.66)	13.20 (8.63 - 19.66)
0.10	30.90 (13.62 - 55.92)	36.31 (26.55 - 47.35)	21.86 (14.27 - 32.00)	7.55 (5.59 - 10.11)	7.55 (5.59 - 10.11)	7.55 (5.59 - 10.11)	7.55 (5.59 - 10.11)	7.55 (5.59 - 10.11)
0.20	9.67 (7.66 - 12.14)	16.00 (12.07 - 20.91)	11.14 (9.11 - 13.55)	4.40 (3.52 - 5.50)	4.40 (3.52 - 5.50)	4.40 (3.52 - 5.50)	4.40 (3.52 - 5.50)	4.40 (3.52 - 5.50)
0.50	2.64 (2.12 - 3.30)	6.28 (5.29 - 7.45)	4.39 (3.49 - 5.52)	1.71 (1.38 - 2.13)	1.71 (1.38 - 2.13)	1.71 (1.38 - 2.13)	1.71 (1.38 - 2.13)	1.71 (1.38 - 2.13)
1.00	1.12 (0.90 - 1.39)	2.63 (2.24 - 3.09)	1.89 (1.58 - 2.26)	0.93 (0.77 - 1.12)	0.93 (0.77 - 1.12)	0.93 (0.77 - 1.12)	0.93 (0.77 - 1.12)	0.93 (0.77 - 1.12)
2.00	0.38 (0.25 - 0.56)	1.31 (1.08 - 1.57)	0.72 (0.57 - 0.90)	0.56 (0.44 - 0.72)	0.56 (0.44 - 0.72)	0.56 (0.44 - 0.72)	0.56 (0.44 - 0.72)	0.56 (0.44 - 0.72)
5.00	0.11 (0.06 - 0.21)	0.66 (0.50 - 0.89)	0.40 (0.28 - 0.57)	0.28 (0.19 - 0.41)	0.28 (0.19 - 0.41)	0.28 (0.19 - 0.41)	0.28 (0.19 - 0.41)	0.28 (0.19 - 0.41)
10.00	0.07 (0.03 - 0.17)	0.39 (0.28 - 0.53)	0.27 (0.17 - 0.41)	0.22 (0.14 - 0.35)	0.22 (0.14 - 0.35)	0.22 (0.14 - 0.35)	0.22 (0.14 - 0.35)	0.22 (0.14 - 0.35)
20.00	0.03 (0.01 - 0.16)	0.25 (0.17 - 0.37)	0.22 (0.14 - 0.36)	0.18 (0.10 - 0.31)	0.18 (0.10 - 0.31)	0.18 (0.10 - 0.31)	0.18 (0.10 - 0.31)	0.18 (0.10 - 0.31)
50.00	0.01 (0.00 - 0.02)	0.17 (0.10 - 0.28)	0.11 (0.06 - 0.21)	0.10 (0.04 - 0.23)	0.10 (0.04 - 0.23)	0.10 (0.04 - 0.23)	0.10 (0.04 - 0.23)	0.10 (0.04 - 0.23)



Learning Curves

