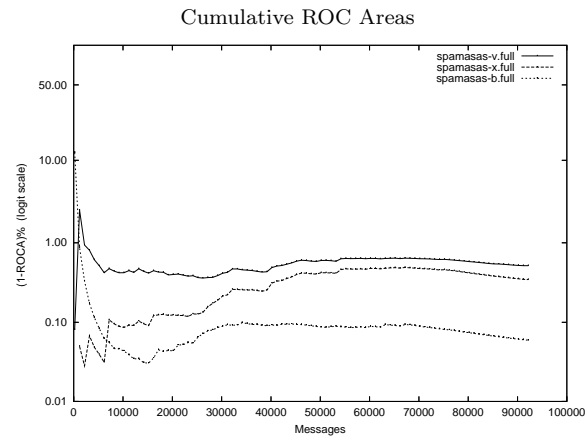
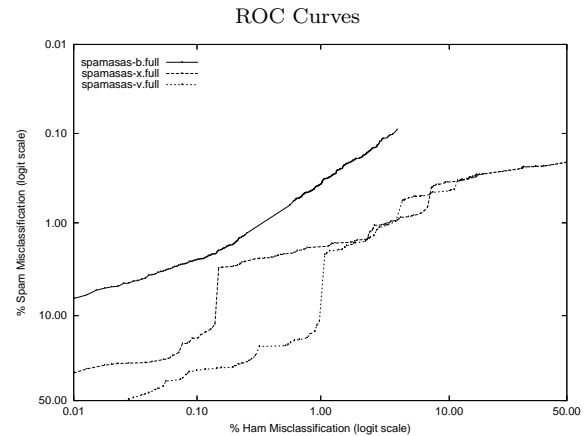


spamasas - Spmassassin (non-participant) on Public trec05p-1/full Corpus

Gold Std.	spamasas-b.full			spamasas-v.full			spamasas-x.full			
	Filter	ham	spam	ham	spam	ham	spam	ham	spam	
Classification	ham	39299	683	ham	39377	20857	ham	39340	1670	
	spam	100	52107	spam	22	31933	spam	59	51120	
Ham Misc%		0.25 (0.21-0.31)			0.06 (0.03-0.08)			0.15 (0.11-0.19)		
Spam Misc%		1.29 (1.20-1.39)			39.51 (39.09-39.93)			3.16 (3.02-3.32)		
Logit av Misc%		0.57 (0.52-0.64)			1.87 (1.53-2.30)			0.70 (0.61-0.79)		
(1-ROCA)%		0.059 (0.044 - 0.081)			0.516 (0.464 - 0.574)			0.345 (0.305 - 0.390)		
Ham Misc%		Spam Misc%			Ham Misc%			Spam Misc%		
0.01		7.81 (2.25 - 23.74)			56.62 (51.79 - 61.34)			38.21 (27.07 - 50.74)		
0.02		5.19 (3.75 - 7.14)			54.84 (49.73 - 59.85)			28.41 (24.57 - 32.58)		
0.05		3.51 (2.88 - 4.26)			42.10 (34.85 - 49.70)			26.54 (22.11 - 31.51)		
0.10		2.56 (2.26 - 2.90)			31.31 (28.66 - 34.10)			16.59 (10.50 - 25.21)		
0.20		1.71 (1.38 - 2.11)			29.42 (27.32 - 31.62)			3.00 (2.17 - 4.13)		
0.50		0.78 (0.64 - 0.95)			19.55 (18.65 - 20.49)			2.22 (2.07 - 2.37)		
1.00		0.37 (0.30 - 0.46)			9.33 (3.37 - 23.30)			1.83 (1.72 - 1.95)		
2.00		0.19 (0.15 - 0.24)			1.64 (1.53 - 1.76)			1.55 (1.44 - 1.67)		
5.00		0.09 (0.06 - 0.12)			0.53 (0.46 - 0.60)			0.85 (0.77 - 0.94)		
10.00		0.09 (0.06 - 0.12)			0.44 (0.38 - 0.50)			0.35 (0.31 - 0.40)		
20.00		0.08 (0.05 - 0.11)			0.27 (0.23 - 0.33)			0.27 (0.23 - 0.32)		
50.00		0.04 (0.02 - 0.06)			0.23 (0.19 - 0.28)			0.23 (0.19 - 0.28)		
Spam Misc%		Ham Misc%			Ham Misc%			Spam Misc%		
0.01		78.00 (57.08 - 90.43)			99.66 (99.60 - 99.71)			99.79 (99.74 - 99.83)		
0.02		72.90 (56.40 - 84.84)			99.65 (99.59 - 99.70)			99.78 (99.72 - 99.82)		
0.05		42.98 (22.35 - 66.37)			99.64 (99.57 - 99.69)			99.76 (99.65 - 99.84)		
0.10		3.77 (0.96 - 13.64)			99.64 (99.57 - 99.69)			99.64 (99.57 - 99.70)		
0.20		1.85 (1.34 - 2.55)			99.64 (91.66 - 99.99)			99.64 (90.17 - 99.99)		
0.50		0.71 (0.60 - 0.84)			6.30 (4.21 - 9.34)			7.22 (6.95 - 7.49)		
1.00		0.40 (0.34 - 0.47)			3.80 (3.35 - 4.31)			3.51 (2.84 - 4.32)		
2.00		0.15 (0.12 - 0.20)			1.32 (1.04 - 1.69)			0.68 (0.56 - 0.83)		
5.00		0.02 (0.01 - 0.06)			1.05 (0.95 - 1.15)			0.15 (0.11 - 0.20)		
10.00		0.01 (0.00 - 0.02)			0.99 (0.90 - 1.09)			0.14 (0.11 - 0.19)		
20.00		0.00 (0.00 - 0.01)			0.32 (0.25 - 0.40)			0.07 (0.05 - 0.11)		
50.00		0.00 (0.00 - 0.01)			0.03 (0.01 - 0.04)			0.00 (0.00 - 0.01)		



Learning Curves

