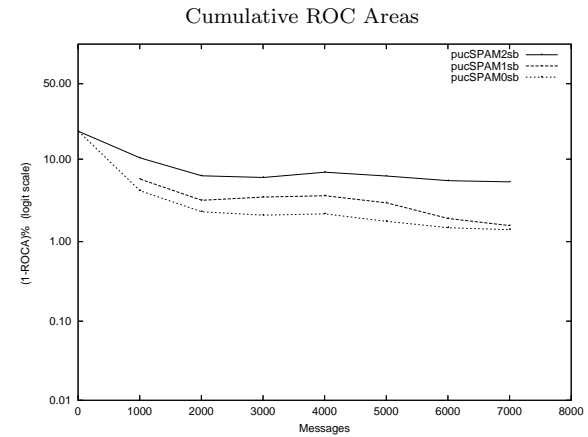
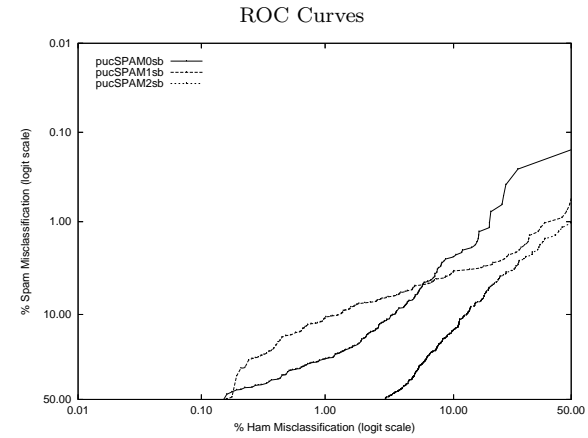


puc - PUCRS on Private S.B. Corpus

Gold Std. Filter Classification	pucSPAM0sb		pucSPAM1sb		pucSPAM2sb	
	ham	spam	ham	spam	ham	spam
Ham Misc%	6141	187	6167	134	6077	317
Spam Misc%	90	588	64	641	154	458
Logit av Misc%	1.44 (1.16-1.77)		1.03 (0.79-1.31)		2.47 (2.10-2.89)	
(1-ROCA)%	24.13 (21.16-27.30)		17.29 (14.69-20.14)		40.90 (37.42-44.46)	
	6.39 (5.64-7.23)		4.45 (3.84-5.15)		11.70 (10.63-12.85)	
Ham Misc%	1.408 (1.116 - 1.774)		1.585 (1.082 - 2.317)		5.437 (4.767 - 6.195)	
0.01	88.90 (75.89 - 95.33)		85.81 (72.41 - 93.30)		81.68 (76.95 - 85.62)	
0.02	76.65 (53.75 - 90.26)		76.90 (57.10 - 89.28)		79.74 (73.71 - 84.67)	
0.05	68.26 (53.07 - 80.35)		66.71 (47.52 - 81.60)		77.94 (71.51 - 83.25)	
0.10	61.81 (47.45 - 74.36)		56.52 (41.72 - 70.24)		73.42 (66.36 - 79.46)	
0.20	43.87 (33.47 - 54.85)		35.35 (17.34 - 58.78)		70.19 (65.20 - 74.75)	
0.50	33.03 (27.35 - 39.25)		16.13 (11.62 - 21.95)		66.06 (62.35 - 69.59)	
1.00	26.06 (22.12 - 30.44)		10.97 (8.44 - 14.14)		61.81 (57.29 - 66.13)	
2.00	17.42 (13.55 - 22.11)		7.74 (5.87 - 10.15)		57.55 (53.15 - 61.83)	
5.00	7.10 (5.14 - 9.73)		5.29 (3.76 - 7.39)		35.74 (29.70 - 42.28)	
10.00	2.45 (1.49 - 4.01)		3.61 (2.28 - 5.67)		14.32 (11.36 - 17.90)	
20.00	0.77 (0.30 - 1.99)		2.84 (1.71 - 4.69)		4.65 (3.27 - 6.56)	
50.00	0.26 (0.07 - 0.96)		0.65 (0.19 - 2.15)		1.03 (0.47 - 2.24)	
Spam Misc%						
0.01	100.00 (nan - nan)		100.00 (nan - nan)		100.00 (nan - nan)	
0.02	100.00 (nan - nan)		100.00 (nan - nan)		100.00 (nan - nan)	
0.05	100.00 (nan - nan)		100.00 (nan - nan)		100.00 (nan - nan)	
0.10	66.46 (42.11 - 84.37)		62.67 (55.41 - 69.40)		85.76 (76.16 - 91.91)	
0.20	59.54 (23.37 - 87.65)		56.89 (47.87 - 65.48)		78.67 (60.16 - 90.01)	
0.50	22.79 (8.06 - 49.83)		51.65 (41.24 - 61.91)		75.48 (53.84 - 89.04)	
1.00	18.22 (13.33 - 24.39)		45.66 (30.89 - 61.23)		52.27 (36.52 - 67.58)	
2.00	13.45 (8.33 - 20.99)		28.17 (16.18 - 44.33)		35.32 (25.25 - 46.89)	
5.00	5.87 (4.61 - 7.46)		5.86 (2.69 - 12.29)		18.89 (15.35 - 23.03)	
10.00	3.59 (2.81 - 4.59)		1.35 (0.81 - 2.25)		12.52 (10.70 - 14.60)	
20.00	1.72 (1.26 - 2.34)		0.40 (0.27 - 0.60)		7.74 (6.62 - 9.02)	
50.00	0.16 (0.08 - 0.30)		0.16 (0.08 - 0.34)		3.02 (2.45 - 3.70)	



Learning Curves

