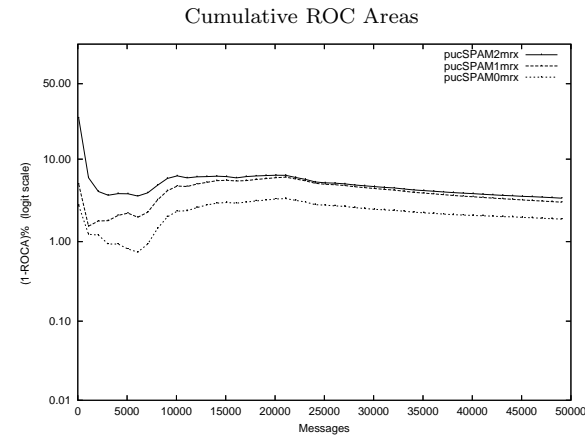
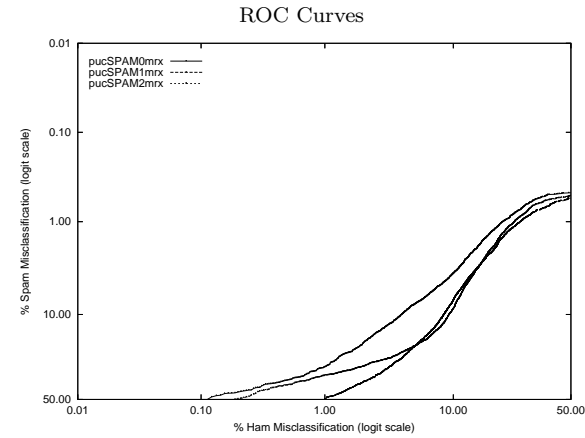


# puc - PUCRS on Private Mr X. Corpus

Gold Std. Filter Classification	pucSPAM0mrx		pucSPAM1mrx		pucSPAM2mrx	
	ham	spam	ham	spam	ham	spam
Ham Misc%	8592	907	8498	1091	8489	1109
Spam Misc%	446	39141	540	38957	549	38939
Logit av Misc%	4.93 (4.50-5.40)		5.97 (5.49-6.48)		6.07 (5.59-6.59)	
(1-ROCA)%	2.26 (2.12-2.42)		2.72 (2.57-2.89)		2.77 (2.61-2.93)	
	3.35 (3.17-3.54)		4.05 (3.85-4.26)		4.12 (3.91-4.33)	
Ham Misc%	1.910 (1.783 - 2.045)		3.081 (2.904 - 3.269)		3.454 (3.290 - 3.627)	
0.01	88.84 (70.92 - 96.30)	79.05 (70.23 - 85.79)	89.24 (86.46 - 91.50)			
0.02	75.61 (50.16 - 90.52)	71.23 (56.96 - 82.24)	87.42 (83.48 - 90.53)			
0.05	58.92 (48.78 - 68.36)	59.77 (49.69 - 69.08)	82.33 (74.95 - 87.89)			
0.10	51.00 (44.28 - 57.69)	55.92 (50.34 - 61.34)	78.25 (72.60 - 83.00)			
0.20	45.28 (42.05 - 48.55)	49.62 (44.30 - 54.96)	70.43 (64.66 - 75.61)			
0.50	37.83 (35.68 - 40.03)	40.86 (38.60 - 43.16)	58.44 (53.92 - 62.82)			
1.00	30.19 (27.07 - 33.51)	35.06 (33.47 - 36.69)	49.87 (47.24 - 52.50)			
2.00	19.40 (16.74 - 22.37)	30.10 (28.48 - 31.77)	39.55 (37.40 - 41.74)			
5.00	8.05 (7.40 - 8.75)	20.41 (19.18 - 21.68)	20.89 (19.29 - 22.58)			
10.00	3.72 (3.38 - 4.10)	8.81 (7.55 - 10.26)	7.18 (6.19 - 8.32)			
20.00	1.17 (1.05 - 1.30)	1.69 (1.47 - 1.95)	1.88 (1.64 - 2.16)			
50.00	0.48 (0.42 - 0.54)	0.51 (0.45 - 0.58)	0.55 (0.49 - 0.62)			
Spam Misc%						
0.01	100.00 (nan - nan)	100.00 (nan - nan)	100.00 (nan - nan)			
0.02	100.00 (nan - nan)	100.00 (nan - nan)	100.00 (nan - nan)			
0.05	100.00 (nan - nan)	100.00 (nan - nan)	100.00 (nan - nan)			
0.10	100.00 (nan - nan)	100.00 (nan - nan)	100.00 (nan - nan)			
0.20	100.00 (nan - nan)	100.00 (nan - nan)	100.00 (nan - nan)			
0.50	39.37 (nan - nan)	54.82 (nan - nan)	60.27 (nan - nan)			
1.00	21.97 (20.11 - 23.95)	25.90 (24.23 - 27.64)	28.09 (26.24 - 30.03)			
2.00	14.61 (13.69 - 15.58)	18.42 (17.40 - 19.49)	19.42 (18.38 - 20.50)			
5.00	7.99 (7.35 - 8.68)	12.31 (11.59 - 13.08)	11.85 (11.19 - 12.54)			
10.00	4.09 (3.72 - 4.50)	9.32 (8.72 - 9.95)	8.57 (8.06 - 9.12)			
20.00	1.93 (1.63 - 2.27)	5.20 (4.74 - 5.71)	5.24 (4.85 - 5.66)			
50.00	0.12 (0.06 - 0.27)	0.19 (0.11 - 0.32)	1.00 (0.81 - 1.22)			



## Learning Curves

