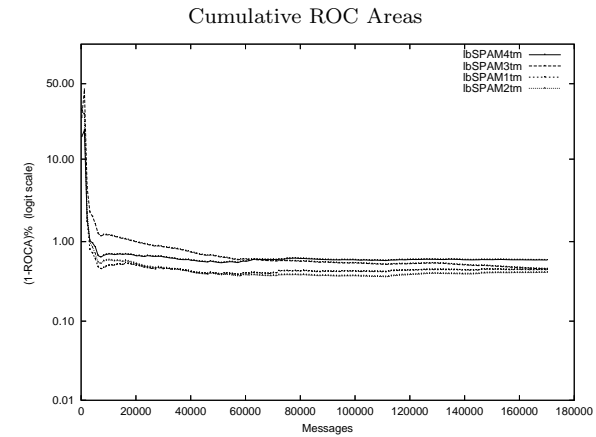
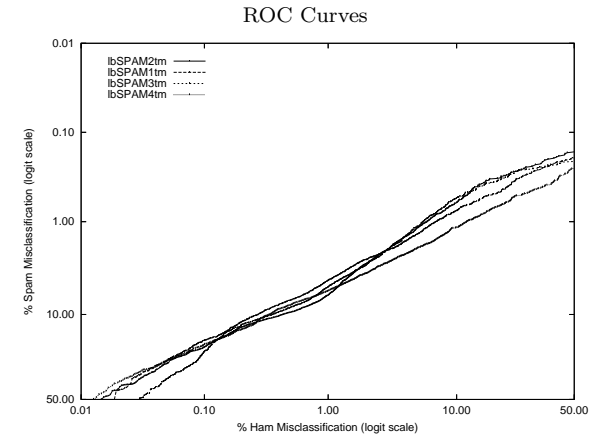


lb - Laird Breyer on Private T.M. Corpus

Gold Std. Filter Classification	lbSPAM1tm			lbSPAM2tm			lbSPAM3tm			lbSPAM4tm		
	ham spam	ham spam	spam ham	ham spam	ham spam	spam ham	ham spam	ham spam	spam ham	ham spam	ham spam	spam ham
Ham Misc%	0.28 (0.25-0.31)			0.29 (0.26-0.31)			0.29 (0.26-0.31)			0.26 (0.24-0.29)		
Spam Misc%	9.80 (9.39-10.23)			11.63 (11.18-12.09)			11.04 (10.60-11.49)			12.06 (11.61-12.53)		
Logit av Misc%	1.72 (1.63-1.81)			1.90 (1.81-2.00)			1.85 (1.76-1.95)			1.87 (1.77-1.97)		
(1-ROCA)%	0.443 (0.388 - 0.506)			0.411 (0.364 - 0.464)			0.456 (0.402 - 0.518)			0.588 (0.529 - 0.655)		
Ham Misc%	Spam Misc%											
0.01	61.04 (51.62 - 69.70)			56.63 (44.37 - 68.13)			74.45 (47.93 - 90.22)			54.03 (45.59 - 62.25)		
0.02	44.24 (33.82 - 55.19)			43.53 (36.98 - 50.31)			61.49 (50.30 - 71.58)			39.36 (33.71 - 45.30)		
0.05	27.17 (23.97 - 30.61)			28.42 (24.07 - 33.20)			37.17 (32.31 - 42.30)			26.81 (23.90 - 29.93)		
0.10	17.94 (16.57 - 19.39)			20.53 (18.71 - 22.48)			22.38 (18.71 - 26.52)			19.67 (18.16 - 21.28)		
0.20	11.96 (11.05 - 12.94)			13.39 (12.46 - 14.39)			12.76 (11.75 - 13.84)			14.15 (13.33 - 15.01)		
0.50	7.13 (6.78 - 7.50)			9.50 (9.03 - 9.99)			8.50 (8.04 - 8.98)			8.03 (7.58 - 8.50)		
1.00	4.41 (4.11 - 4.72)			6.32 (5.87 - 6.80)			5.21 (4.85 - 5.60)			5.72 (5.37 - 6.08)		
2.00	2.63 (2.40 - 2.89)			2.93 (2.65 - 3.24)			3.04 (2.79 - 3.32)			3.72 (3.44 - 4.02)		
5.00	1.40 (1.26 - 1.56)			1.20 (1.05 - 1.37)			1.15 (1.00 - 1.33)			2.00 (1.81 - 2.21)		
10.00	0.76 (0.65 - 0.89)			0.61 (0.52 - 0.73)			0.55 (0.45 - 0.66)			1.16 (1.03 - 1.32)		
20.00	0.47 (0.39 - 0.57)			0.33 (0.26 - 0.42)			0.35 (0.27 - 0.45)			0.67 (0.57 - 0.79)		
50.00	0.19 (0.14 - 0.27)			0.17 (0.12 - 0.24)			0.22 (0.16 - 0.29)			0.26 (0.19 - 0.34)		
Spam Misc%	Ham Misc%											
0.01	99.86 (95.84 - 100.00)			99.77 (97.87 - 99.98)			99.99 (nan - nan)			99.49 (95.66 - 99.94)		
0.02	98.33 (78.52 - 99.89)			98.11 (81.90 - 99.83)			99.96 (99.56 - 100.00)			99.17 (92.86 - 99.91)		
0.05	91.91 (74.62 - 97.77)			89.79 (58.42 - 98.21)			99.36 (97.56 - 99.83)			89.66 (73.58 - 96.43)		
0.10	80.38 (61.71 - 91.24)			66.68 (54.11 - 77.26)			97.05 (85.02 - 99.48)			79.15 (68.07 - 87.11)		
0.20	48.38 (28.46 - 68.83)			37.98 (24.08 - 54.17)			59.47 (30.76 - 82.89)			59.03 (47.37 - 69.75)		
0.50	17.90 (13.44 - 23.44)			11.99 (10.35 - 13.85)			11.36 (8.67 - 14.75)			27.52 (20.64 - 35.65)		
1.00	7.08 (6.01 - 8.31)			6.00 (5.19 - 6.93)			5.60 (4.96 - 6.32)			11.81 (10.08 - 13.80)		
2.00	3.18 (2.68 - 3.77)			3.04 (2.72 - 3.39)			3.03 (2.76 - 3.33)			5.00 (4.36 - 5.73)		
5.00	0.87 (0.80 - 0.95)			1.23 (1.16 - 1.31)			1.04 (0.95 - 1.13)			1.25 (1.11 - 1.41)		
10.00	0.27 (0.24 - 0.31)			0.44 (0.38 - 0.50)			0.36 (0.32 - 0.41)			0.34 (0.31 - 0.38)		
20.00	0.08 (0.07 - 0.10)			0.10 (0.09 - 0.12)			0.11 (0.10 - 0.13)			0.10 (0.08 - 0.12)		
50.00	0.02 (0.01 - 0.03)			0.01 (0.01 - 0.02)			0.03 (0.02 - 0.04)			0.01 (0.01 - 0.02)		



Learning Curves

