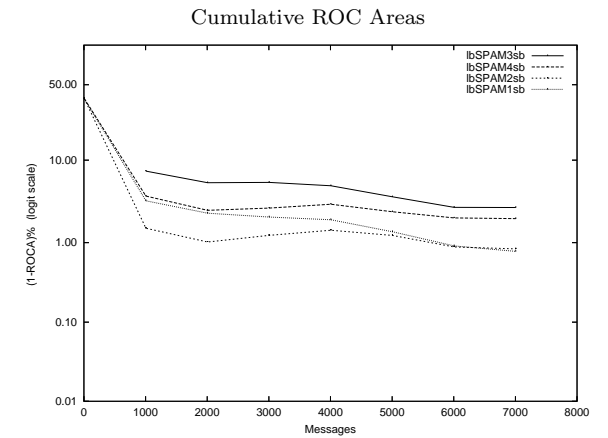
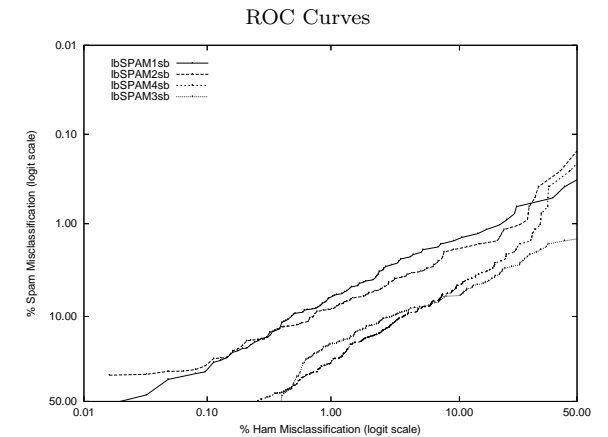


lb - Laird Breyer on Private S.B. Corpus

Gold Std. Filter Classification	lbSPAM1sb		lbSPAM2sb		lbSPAM3sb		lbSPAM4sb	
	ham spam	ham spam	ham spam	ham spam	ham spam	ham spam	ham spam	ham spam
Ham Misc%	0.05 (0.01-0.14)		0.03 (0.00-0.12)		0.47 (0.31-0.67)		0.26 (0.15-0.42)	
Spam Misc%	36.13 (32.74-39.62)		33.16 (29.85-36.60)		42.45 (38.94-46.02)		49.94 (46.36-53.51)	
Logit av Misc%	1.62 (0.92-2.84)		1.25 (0.62-2.47)		5.55 (4.61-6.67)		4.82 (3.78-6.14)	
(1-ROCA)%	0.778 (0.449 - 1.347)		0.835 (0.593 - 1.173)		2.727 (2.128 - 3.488)		1.988 (1.608 - 2.455)	
Ham Misc%	Spam Misc%							
0.01	82.19 (49.41 - 95.62)		75.61 (35.31 - 94.63)		98.84 (97.39 - 99.49)		71.10 (63.40 - 77.75)	
0.02	51.74 (20.32 - 81.84)		33.42 (8.48 - 73.11)		98.71 (97.33 - 99.38)		67.74 (57.59 - 76.46)	
0.05	36.13 (17.63 - 59.93)		31.35 (17.29 - 49.96)		98.58 (97.03 - 99.33)		60.90 (50.18 - 70.67)	
0.10	31.61 (20.07 - 45.98)		28.52 (20.45 - 38.24)		98.32 (96.53 - 99.20)		52.65 (44.06 - 61.08)	
0.20	20.13 (13.46 - 29.00)		19.10 (12.82 - 27.48)		97.29 (89.42 - 99.35)		50.58 (45.77 - 55.38)	
0.50	9.42 (6.53 - 13.41)		12.52 (9.94 - 15.64)		38.84 (14.28 - 70.77)		40.00 (32.25 - 48.28)	
1.00	6.45 (4.65 - 8.89)		8.39 (6.68 - 10.48)		18.45 (15.27 - 22.12)		27.23 (22.23 - 32.87)	
2.00	4.26 (3.10 - 5.82)		5.68 (4.21 - 7.62)		12.52 (10.14 - 15.35)		16.00 (13.44 - 18.94)	
5.00	2.19 (1.33 - 3.60)		3.48 (2.49 - 4.86)		8.13 (6.36 - 10.33)		8.39 (6.51 - 10.74)	
10.00	1.55 (0.83 - 2.87)		1.94 (1.20 - 3.11)		6.19 (4.80 - 7.95)		4.77 (3.41 - 6.64)	
20.00	1.03 (0.42 - 2.52)		1.29 (0.67 - 2.48)		3.23 (2.28 - 4.54)		2.58 (1.69 - 3.92)	
50.00	0.39 (0.09 - 1.66)		0.26 (0.06 - 1.06)		1.55 (0.87 - 2.73)		0.26 (0.07 - 0.94)	
Spam Misc%	Ham Misc%							
0.01	100.00 (nan - nan)		100.00 (nan - nan)		100.00 (nan - nan)		100.00 (nan - nan)	
0.02	100.00 (nan - nan)		100.00 (nan - nan)		100.00 (nan - nan)		100.00 (nan - nan)	
0.05	100.00 (nan - nan)		100.00 (nan - nan)		100.00 (nan - nan)		100.00 (nan - nan)	
0.10	81.98 (58.00 - 93.74)		54.68 (44.89 - 64.12)		100.00 (nan - nan)		80.89 (53.22 - 94.03)	
0.20	79.52 (42.05 - 95.41)		52.58 (35.93 - 68.67)		99.61 (nan - nan)		57.90 (26.07 - 84.29)	
0.50	44.12 (13.77 - 79.61)		32.68 (18.13 - 51.54)		71.75 (nan - nan)		37.01 (24.40 - 51.67)	
1.00	21.14 (7.91 - 45.54)		28.33 (17.24 - 42.86)		60.79 (35.92 - 81.09)		33.65 (28.60 - 39.11)	
2.00	5.30 (1.79 - 14.61)		8.99 (3.89 - 19.40)		33.45 (17.91 - 53.64)		24.27 (17.12 - 33.19)	
5.00	1.44 (0.88 - 2.37)		2.66 (1.61 - 4.37)		12.45 (8.36 - 18.15)		9.45 (6.54 - 13.47)	
10.00	0.48 (0.30 - 0.77)		0.72 (0.48 - 1.08)		3.07 (2.01 - 4.65)		3.77 (2.66 - 5.33)	
20.00	0.22 (0.12 - 0.41)		0.19 (0.09 - 0.40)		0.87 (0.61 - 1.23)		1.43 (1.13 - 1.80)	
50.00	0.03 (0.01 - 0.14)		0.02 (0.00 - 0.06)		0.40 (0.25 - 0.64)		0.26 (0.08 - 0.80)	



Learning Curves

