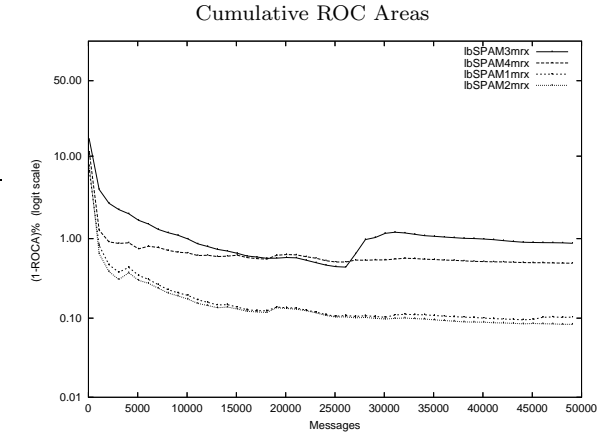
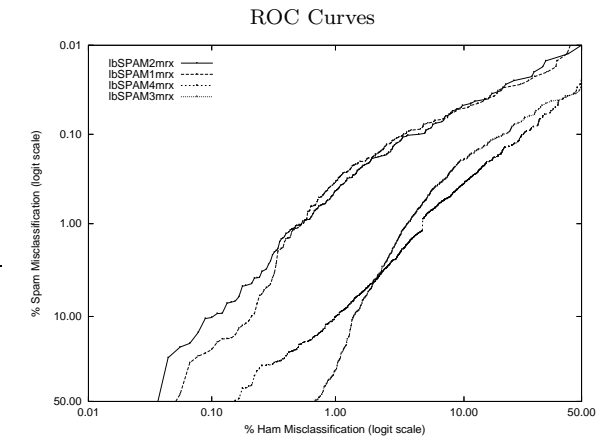


lb - Laird Breyer on Private Mr X. Corpus

Gold Std. Filter Classification	lbSPAM1mrx		lbSPAM2mrx		lbSPAM3mrx		lbSPAM4mrx	
	ham spam	ham spam	ham spam	ham spam	ham spam	ham spam	ham spam	ham spam
	8935 103	113 39935	8891 147	94 39954	8420 618	139 39909	8599 439	485 39563
Ham Misc%	1.14 (0.93-1.38)		1.63 (1.38-1.91)		6.84 (6.33-7.38)		4.86 (4.42-5.32)	
Spam Misc%	0.28 (0.23-0.34)		0.23 (0.19-0.29)		0.35 (0.29-0.41)		1.21 (1.11-1.32)	
Logit av Misc%	0.57 (0.50-0.65)		0.62 (0.54-0.71)		1.57 (1.44-1.72)		2.44 (2.29-2.60)	
(1-ROCA)%	0.103 (0.072 - 0.148)		0.083 (0.054 - 0.130)		0.875 (0.723 - 1.059)		0.492 (0.428 - 0.566)	
Ham Misc%	Spam Misc%							
0.01	99.79 (74.15 - 100.00)		99.09 (78.96 - 99.97)		100.00 (nan - nan)		99.69 (91.29 - 99.99)	
0.02	69.58 (1.69 - 99.67)		80.96 (9.20 - 99.44)		99.48 (nan - nan)		90.49 (26.16 - 99.61)	
0.05	57.85 (25.64 - 84.53)		24.34 (1.90 - 84.26)		97.82 (89.99 - 99.55)		82.08 (62.23 - 92.72)	
0.10	20.67 (8.02 - 43.79)		10.24 (4.03 - 23.66)		95.73 (89.13 - 98.40)		58.36 (39.22 - 75.28)	
0.20	11.13 (5.35 - 21.73)		4.74 (2.58 - 8.56)		85.79 (70.42 - 93.87)		40.38 (26.66 - 55.78)	
0.50	1.10 (0.67 - 1.81)		1.03 (0.75 - 1.42)		66.66 (55.15 - 76.48)		20.06 (16.02 - 24.81)	
1.00	0.34 (0.24 - 0.49)		0.43 (0.30 - 0.62)		30.89 (18.44 - 46.91)		10.24 (7.93 - 13.13)	
2.00	0.18 (0.14 - 0.23)		0.19 (0.14 - 0.24)		4.30 (2.95 - 6.24)		4.50 (3.78 - 5.34)	
5.00	0.08 (0.05 - 0.11)		0.10 (0.07 - 0.14)		0.58 (0.48 - 0.69)		0.87 (0.61 - 1.25)	
10.00	0.05 (0.03 - 0.08)		0.05 (0.03 - 0.08)		0.19 (0.15 - 0.24)		0.36 (0.30 - 0.44)	
20.00	0.03 (0.02 - 0.06)		0.03 (0.01 - 0.05)		0.10 (0.07 - 0.13)		0.14 (0.11 - 0.19)	
50.00	0.01 (0.00 - 0.03)		0.01 (0.00 - 0.03)		0.03 (0.02 - 0.06)		0.02 (0.01 - 0.05)	
Spam Misc%	Ham Misc%							
0.01	44.80 (19.66 - 72.91)		49.81 (28.83 - 70.86)		96.05 (67.63 - 99.65)		83.74 (22.24 - 98.93)	
0.02	34.34 (16.98 - 57.22)		29.04 (14.19 - 50.33)		63.34 (23.18 - 90.82)		52.56 (22.77 - 80.63)	
0.05	10.64 (5.51 - 19.56)		9.53 (4.67 - 18.46)		31.58 (19.58 - 46.67)		37.97 (29.87 - 46.81)	
0.10	3.45 (2.15 - 5.49)		4.54 (2.74 - 7.41)		18.72 (13.96 - 24.63)		25.18 (20.24 - 30.86)	
0.20	1.74 (1.24 - 2.43)		1.89 (1.37 - 2.62)		9.38 (7.79 - 11.26)		15.38 (12.54 - 18.72)	
0.50	0.77 (0.60 - 1.00)		0.93 (0.73 - 1.19)		5.34 (4.85 - 5.89)		7.94 (6.88 - 9.16)	
1.00	0.55 (0.42 - 0.73)		0.54 (0.40 - 0.73)		3.73 (3.31 - 4.20)		4.89 (4.50 - 5.31)	
2.00	0.37 (0.26 - 0.51)		0.33 (0.23 - 0.49)		2.82 (2.47 - 3.21)		3.33 (3.00 - 3.70)	
5.00	0.28 (0.20 - 0.39)		0.18 (0.11 - 0.30)		1.95 (1.66 - 2.28)		1.81 (1.58 - 2.08)	
10.00	0.21 (0.14 - 0.31)		0.11 (0.06 - 0.20)		1.41 (1.17 - 1.69)		1.02 (0.83 - 1.25)	
20.00	0.11 (0.06 - 0.20)		0.06 (0.02 - 0.14)		1.18 (0.96 - 1.46)		0.51 (0.39 - 0.66)	
50.00	0.06 (0.02 - 0.16)		0.04 (0.01 - 0.15)		0.69 (0.52 - 0.90)		0.15 (0.10 - 0.25)	



Learning Curves

