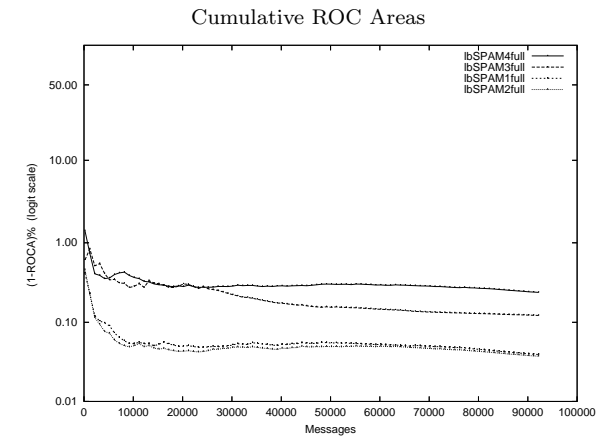
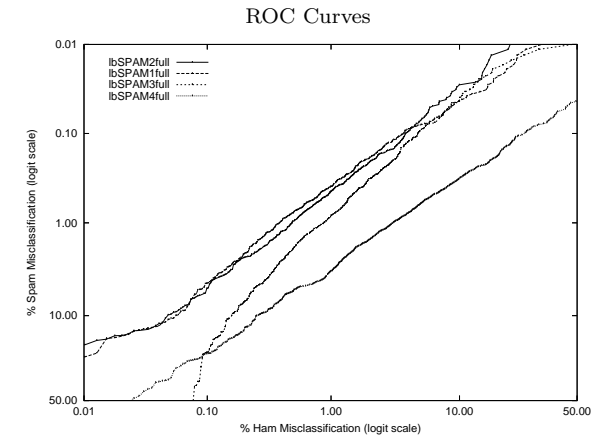


# lb - Laird Breyer on Public trec05p-1/full Corpus

Gold Std. Filter Classification	lbSPAM1full		lbSPAM2full		lbSPAM3full		lbSPAM4full	
	ham spam	ham spam	ham spam	ham spam	ham spam	ham spam	ham spam	ham spam
	39237 162	475 52315	39197 202	490 52300	39072 327	556 52234	39039 360	2041 50749
Ham Misc%	0.41 (0.35-0.48)		0.51 (0.44-0.59)		0.83 (0.74-0.92)		0.91 (0.82-1.01)	
Spam Misc%	0.90 (0.82-0.98)		0.93 (0.85-1.01)		1.05 (0.97-1.14)		3.87 (3.70-4.03)	
Logit av Misc%	0.61 (0.56-0.67)		0.69 (0.64-0.75)		0.94 (0.87-1.00)		1.89 (1.79-2.00)	
(1-ROCA)%	0.039 (0.031 - 0.049)		0.037 (0.031 - 0.045)		0.122 (0.098 - 0.153)		0.238 (0.217 - 0.261)	
Ham Misc%	Spam Misc%							
0.01	27.58 (17.88 - 39.97)		19.77 (13.39 - 28.22)		88.49 (82.73 - 92.51)		84.57 (55.09 - 96.07)	
0.02	16.44 (10.41 - 24.98)		15.68 (12.29 - 19.79)		87.61 (83.71 - 90.68)		64.28 (36.81 - 84.75)	
0.05	10.96 (7.81 - 15.15)		9.84 (6.64 - 14.32)		75.22 (57.72 - 87.10)		36.92 (27.28 - 47.73)	
0.10	4.56 (3.14 - 6.60)		5.19 (3.53 - 7.58)		22.38 (8.12 - 48.49)		22.94 (19.02 - 27.40)	
0.20	2.21 (1.62 - 3.01)		2.42 (1.98 - 2.96)		7.28 (4.95 - 10.58)		14.12 (11.33 - 17.47)	
0.50	0.77 (0.65 - 0.90)		0.96 (0.78 - 1.17)		1.91 (1.53 - 2.38)		5.50 (4.89 - 6.18)	
1.00	0.39 (0.33 - 0.47)		0.45 (0.37 - 0.54)		0.86 (0.75 - 0.98)		3.41 (2.98 - 3.90)	
2.00	0.19 (0.16 - 0.24)		0.22 (0.18 - 0.26)		0.33 (0.28 - 0.39)		1.55 (1.40 - 1.71)	
5.00	0.08 (0.06 - 0.11)		0.07 (0.05 - 0.10)		0.09 (0.07 - 0.13)		0.63 (0.56 - 0.71)	
10.00	0.04 (0.03 - 0.07)		0.03 (0.02 - 0.05)		0.04 (0.02 - 0.06)		0.32 (0.27 - 0.38)	
20.00	0.02 (0.01 - 0.04)		0.01 (0.01 - 0.03)		0.02 (0.01 - 0.04)		0.15 (0.12 - 0.19)	
50.00	0.01 (0.00 - 0.03)		0.00 (0.00 - 0.01)		0.01 (0.00 - 0.03)		0.04 (0.03 - 0.07)	
Spam Misc%	Ham Misc%							
0.01	36.72 (19.40 - 58.31)		22.51 (15.12 - 32.15)		54.47 (0.34 - 99.76)		81.45 (72.68 - 87.88)	
0.02	21.10 (13.23 - 31.95)		15.04 (10.42 - 21.21)		17.02 (6.39 - 38.11)		78.14 (70.01 - 84.56)	
0.05	8.68 (5.68 - 13.03)		6.28 (4.46 - 8.79)		8.76 (6.61 - 11.51)		45.38 (31.86 - 59.62)	
0.10	3.79 (2.66 - 5.36)		3.93 (3.27 - 4.72)		4.87 (3.92 - 6.05)		27.45 (20.85 - 35.21)	
0.20	1.86 (1.43 - 2.41)		2.15 (1.78 - 2.60)		3.20 (2.78 - 3.67)		16.73 (14.00 - 19.86)	
0.50	0.79 (0.68 - 0.91)		0.94 (0.81 - 1.09)		1.45 (1.29 - 1.63)		6.25 (5.44 - 7.16)	
1.00	0.38 (0.32 - 0.45)		0.49 (0.42 - 0.56)		0.87 (0.78 - 0.98)		3.11 (2.85 - 3.40)	
2.00	0.22 (0.17 - 0.27)		0.22 (0.17 - 0.32)		0.49 (0.42 - 0.56)		1.53 (1.39 - 1.68)	
5.00	0.10 (0.07 - 0.13)		0.10 (0.07 - 0.15)		0.25 (0.20 - 0.32)		0.57 (0.47 - 0.68)	
10.00	0.06 (0.04 - 0.08)		0.05 (0.03 - 0.08)		0.16 (0.12 - 0.21)		0.26 (0.21 - 0.32)	
20.00	0.02 (0.01 - 0.04)		0.01 (0.00 - 0.03)		0.11 (0.08 - 0.15)		0.12 (0.09 - 0.16)	
50.00	0.00 (0.00 - 0.00)		0.00 (0.00 - 0.00)		0.08 (0.05 - 0.12)		0.03 (0.01 - 0.05)	



## Learning Curves

