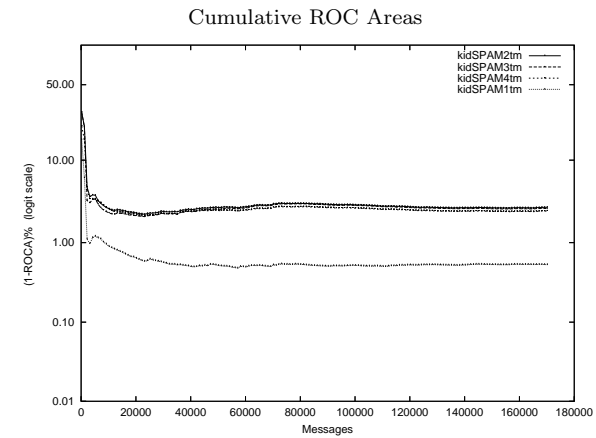
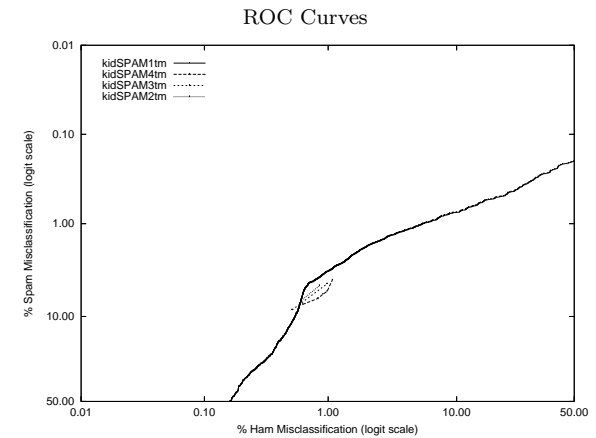


kid - Beijing U. of Posts and Telecom. on Private T.M. Corpus

Gold Std. Filter Classification	kidSPAM1tm		kidSPAM2tm		kidSPAM3tm		kidSPAM4tm	
	ham spam	ham spam	ham spam	ham spam	ham spam	ham spam	ham spam	ham spam
	149708	1022	149770	1337	149914	1675	149317	1147
	977	18494	915	18179	771	17841	1368	18369
Ham Misc%	0.65 (0.61-0.69)		0.61 (0.57-0.65)		0.51 (0.48-0.55)		0.91 (0.86-0.96)	
Spam Misc%	5.24 (4.93-5.56)		6.85 (6.50-7.21)		8.58 (8.19-8.98)		5.88 (5.55-6.22)	
Logit av Misc%	1.86 (1.78-1.95)		2.08 (1.99-2.16)		2.15 (2.06-2.24)		2.34 (2.25-2.43)	
(1-ROCA)%	0.530 (0.477 - 0.589)		2.749 (2.601 - 2.906)		2.653 (2.482 - 2.836)		2.473 (2.320 - 2.636)	
Ham Misc%	Spam Misc%							
0.01	91.28 (88.74 - 93.30)		98.63 (97.45 - 99.27)		98.41 (97.14 - 99.12)		98.44 (97.38 - 99.07)	
0.02	87.01 (81.65 - 90.97)		97.26 (95.83 - 98.21)		96.94 (95.53 - 97.91)		96.98 (95.70 - 97.88)	
0.05	73.96 (71.16 - 76.59)		93.00 (91.04 - 94.55)		92.20 (90.00 - 93.94)		92.99 (91.16 - 94.47)	
0.10	62.56 (58.97 - 66.02)		85.16 (82.29 - 87.64)		82.11 (79.06 - 84.80)		85.34 (82.93 - 87.46)	
0.20	38.73 (33.35 - 44.41)		70.20 (66.27 - 73.85)		65.01 (61.21 - 68.64)		70.44 (67.19 - 73.50)	
0.50	12.05 (10.31 - 14.02)		23.71 (18.60 - 29.72)		10.39 (6.42 - 16.37)		26.49 (21.53 - 32.13)	
1.00	3.36 (3.10 - 3.64)		4.77 (4.50 - 5.05)		4.57 (4.29 - 4.86)		5.20 (4.63 - 5.82)	
2.00	1.83 (1.65 - 2.03)		4.70 (4.44 - 4.99)		4.49 (4.23 - 4.78)		4.07 (3.82 - 4.35)	
5.00	1.07 (0.94 - 1.22)		4.53 (4.27 - 4.80)		4.35 (4.08 - 4.62)		3.96 (3.70 - 4.23)	
10.00	0.75 (0.63 - 0.89)		4.33 (4.08 - 4.59)		4.15 (3.89 - 4.43)		3.79 (3.54 - 4.05)	
20.00	0.50 (0.41 - 0.61)		3.87 (3.64 - 4.12)		3.76 (3.50 - 4.03)		3.40 (3.16 - 3.65)	
50.00	0.20 (0.15 - 0.27)		2.44 (2.26 - 2.64)		2.41 (2.19 - 2.65)		2.17 (1.98 - 2.38)	
Spam Misc%	Ham Misc%							
0.01	98.81 (95.00 - 99.72)		99.93 (99.62 - 99.99)		99.93 (99.68 - 99.98)		99.93 (99.55 - 99.99)	
0.02	96.21 (85.95 - 99.06)		99.78 (99.32 - 99.93)		99.78 (99.43 - 99.91)		99.78 (99.30 - 99.93)	
0.05	84.07 (66.07 - 93.46)		99.56 (99.11 - 99.78)		99.56 (99.25 - 99.74)		99.53 (99.12 - 99.75)	
0.10	72.82 (59.69 - 82.89)		98.30 (97.23 - 98.96)		98.09 (97.22 - 98.69)		98.36 (97.41 - 98.96)	
0.20	49.91 (39.82 - 60.01)		96.29 (94.82 - 97.36)		96.30 (95.09 - 97.22)		96.27 (94.83 - 97.32)	
0.50	20.28 (14.48 - 27.66)		90.64 (88.43 - 92.47)		90.65 (88.65 - 92.33)		89.60 (87.58 - 91.33)	
1.00	5.58 (4.31 - 7.19)		79.94 (77.04 - 82.55)		80.25 (77.26 - 82.93)		77.53 (74.46 - 80.34)	
2.00	1.78 (1.58 - 2.00)		59.32 (55.54 - 63.00)		59.04 (54.61 - 63.32)		55.42 (50.49 - 60.24)	
5.00	0.66 (0.62 - 0.70)		0.83 (0.58 - 1.19)		0.93 (0.87 - 0.98)		1.02 (0.98 - 1.07)	
10.00	0.54 (0.51 - 0.58)		0.58 (0.55 - 0.62)		0.50 (0.47 - 0.54)		0.60 (0.57 - 0.64)	
20.00	0.38 (0.35 - 0.41)		0.52 (0.49 - 0.56)		0.45 (0.42 - 0.49)		0.54 (0.51 - 0.58)	
50.00	0.16 (0.14 - 0.18)		0.33 (0.30 - 0.36)		0.28 (0.26 - 0.32)		0.33 (0.30 - 0.36)	



Learning Curves

