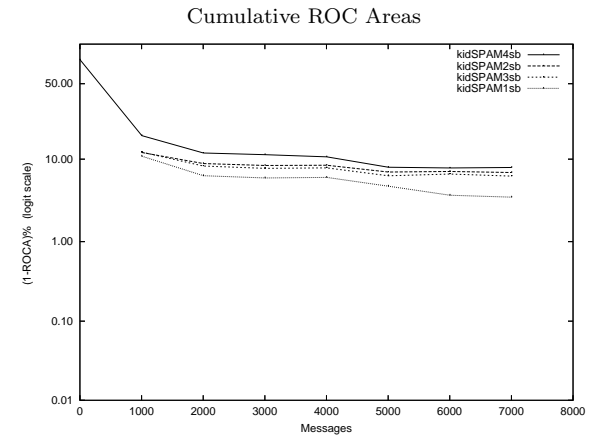
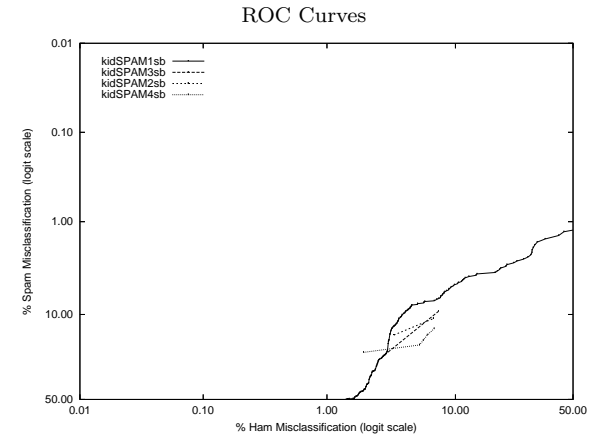


kid - Beijing U. of Posts and Telecom. on Private S.B. Corpus

Gold Std. Filter Classification	kidSPAM1sb			kidSPAM2sb			kidSPAM3sb			kidSPAM4sb		
	ham spam	ham spam	spam	ham spam	ham spam	spam	ham spam	ham spam	spam	ham spam	ham spam	
Ham Misc%	3.37 (2.94-3.85)			3.40 (2.97-3.88)			2.86 (2.46-3.30)			5.75 (5.18-6.35)		
Spam Misc%	13.57 (11.23-16.18)			16.15 (13.63-18.93)			24.42 (21.43-27.60)			18.09 (15.44-20.98)		
Logit av Misc%	6.89 (6.14-7.73)			7.62 (6.83-8.49)			8.89 (8.03-9.83)			10.40 (9.46-11.43)		
(1-ROCA)%	3.553 (2.826 - 4.460)			7.020 (5.919 - 8.308)			6.360 (5.247 - 7.690)			8.042 (6.843 - 9.430)		
Ham Misc%	Spam Misc%											
0.01	100.00 (nan - nan)			98.84 (nan - nan)			98.97 (nan - nan)			98.84 (nan - nan)		
0.02	100.00 (nan - nan)			98.84 (nan - nan)			98.71 (nan - nan)			98.84 (95.47 - 99.71)		
0.05	100.00 (nan - nan)			98.58 (95.93 - 99.51)			97.55 (93.37 - 99.12)			98.19 (94.88 - 99.38)		
0.10	99.22 (nan - nan)			97.29 (94.14 - 98.77)			93.67 (87.48 - 96.91)			95.22 (90.12 - 97.75)		
0.20	95.99 (84.40 - 99.07)			93.15 (88.44 - 96.03)			91.99 (87.33 - 95.03)			92.64 (87.06 - 95.92)		
0.50	77.78 (62.42 - 88.06)			84.63 (78.08 - 89.48)			81.01 (73.97 - 86.49)			78.42 (70.51 - 84.67)		
1.00	57.36 (52.24 - 62.34)			73.39 (66.42 - 79.35)			69.51 (61.82 - 76.24)			59.95 (50.44 - 68.76)		
2.00	43.67 (34.56 - 53.22)			47.67 (38.90 - 56.59)			44.19 (34.79 - 54.01)			22.87 (17.52 - 29.26)		
5.00	8.01 (6.10 - 10.45)			13.57 (11.33 - 16.16)			18.09 (14.99 - 21.67)			20.03 (17.61 - 22.68)		
10.00	4.91 (3.54 - 6.77)			10.47 (8.42 - 12.93)			8.91 (7.11 - 11.12)			13.31 (11.09 - 15.88)		
20.00	3.49 (2.27 - 5.32)			8.91 (7.07 - 11.19)			7.49 (5.85 - 9.55)			10.85 (8.88 - 13.19)		
50.00	1.29 (0.64 - 2.58)			5.30 (4.01 - 6.97)			4.65 (3.20 - 6.71)			6.98 (5.29 - 9.14)		
Spam Misc%	Ham Misc%											
0.01	100.00 (nan - nan)			100.00 (nan - nan)			100.00 (nan - nan)			100.00 (nan - nan)		
0.02	100.00 (nan - nan)			100.00 (nan - nan)			100.00 (nan - nan)			100.00 (nan - nan)		
0.05	100.00 (nan - nan)			100.00 (nan - nan)			100.00 (nan - nan)			100.00 (nan - nan)		
0.10	96.53 (89.35 - 98.93)			93.87 (76.95 - 98.60)			93.95 (78.46 - 98.51)			97.56 (79.33 - 99.76)		
0.20	94.03 (79.07 - 98.50)			92.83 (77.42 - 97.99)			92.89 (80.28 - 97.67)			96.61 (86.63 - 99.21)		
0.50	83.95 (64.52 - 93.77)			91.89 (82.16 - 96.54)			91.96 (80.96 - 96.85)			92.71 (84.53 - 96.73)		
1.00	79.74 (45.80 - 94.83)			84.85 (75.43 - 91.08)			85.96 (72.94 - 93.29)			88.15 (79.32 - 93.52)		
2.00	32.22 (19.07 - 48.94)			76.84 (66.42 - 84.76)			77.11 (63.64 - 86.64)			82.26 (73.38 - 88.64)		
5.00	9.84 (6.11 - 15.48)			55.54 (44.02 - 66.49)			47.08 (31.84 - 62.88)			63.92 (51.62 - 74.63)		
10.00	4.04 (3.22 - 5.06)			13.15 (4.57 - 32.34)			7.03 (3.78 - 12.72)			26.77 (16.16 - 40.95)		
20.00	3.07 (2.66 - 3.53)			3.29 (2.87 - 3.77)			4.48 (3.52 - 5.68)			5.10 (3.11 - 8.26)		
50.00	1.43 (1.04 - 1.96)			1.89 (1.58 - 2.27)			1.73 (1.39 - 2.16)			1.25 (1.01 - 1.55)		



Learning Curves

