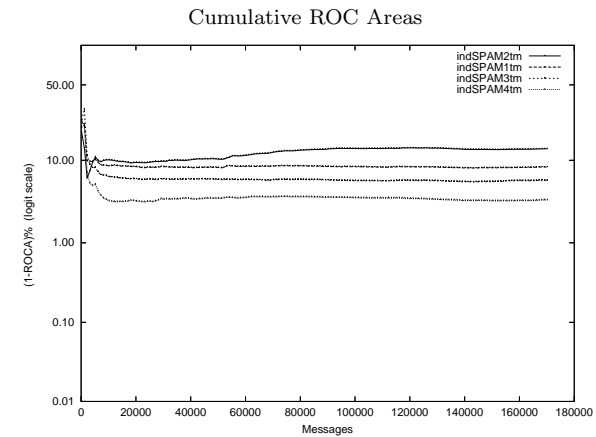
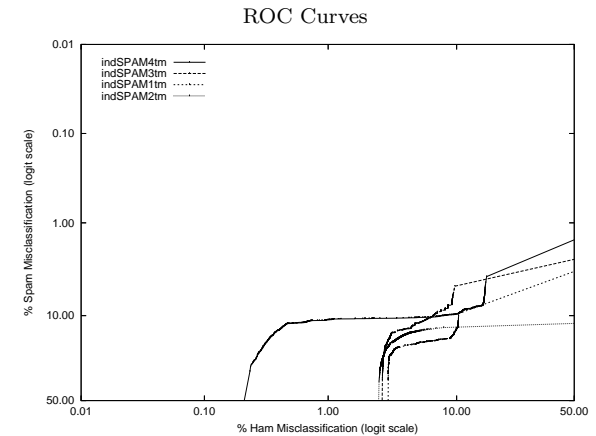


ind - Indiana U. (Yang) on Private T.M. Corpus

Gold Std. Filter Classification	indSPAM1tm		indSPAM2tm		indSPAM3tm		indSPAM4tm	
	ham spam	ham spam	ham spam	ham spam	ham spam	ham spam	ham spam	ham spam
Ham Misc%	3.08 (2.99-3.17)		2.87 (2.79-2.96)		2.92 (2.84-3.01)		0.34 (0.31-0.37)	
Spam Misc%	24.05 (23.45-24.65)		21.41 (20.83-21.99)		18.98 (18.43-19.54)		16.74 (16.22-17.27)	
Logit av Misc%	9.11 (8.93-9.30)		8.24 (8.07-8.41)		7.74 (7.58-7.91)		2.54 (2.43-2.66)	
(1-ROCA)%	8.382 (8.140 - 8.630)		13.462 (13.060 - 13.875)		5.843 (5.622 - 6.072)		3.388 (3.209 - 3.577)	
Ham Misc%	Spam Misc%							
0.01	99.82 (99.72 - 99.88)		99.85 (99.76 - 99.91)		99.83 (99.75 - 99.89)		99.68 (99.43 - 99.82)	
0.02	99.77 (99.66 - 99.84)		99.82 (99.71 - 99.88)		99.81 (99.72 - 99.86)		99.42 (99.10 - 99.62)	
0.05	99.62 (99.50 - 99.71)		99.71 (99.59 - 99.79)		99.67 (99.57 - 99.75)		98.33 (97.90 - 98.67)	
0.10	99.44 (99.30 - 99.55)		99.44 (99.28 - 99.56)		99.41 (99.26 - 99.53)		96.77 (96.17 - 97.27)	
0.20	98.88 (98.69 - 99.05)		98.92 (98.72 - 99.09)		98.87 (98.66 - 99.04)		57.06 (37.04 - 75.00)	
0.50	97.41 (97.12 - 97.66)		97.44 (97.16 - 97.69)		97.28 (97.01 - 97.53)		11.99 (11.51 - 12.49)	
1.00	94.59 (94.22 - 94.94)		94.57 (94.13 - 94.99)		94.41 (94.04 - 94.77)		11.04 (10.57 - 11.53)	
2.00	89.02 (88.50 - 89.52)		89.60 (89.01 - 90.16)		89.00 (88.42 - 89.56)		10.71 (10.28 - 11.16)	
5.00	18.76 (18.11 - 19.43)		14.42 (13.96 - 14.90)		12.01 (11.52 - 12.51)		10.49 (10.05 - 10.95)	
10.00	13.74 (13.05 - 14.46)		13.10 (12.65 - 13.56)		4.91 (4.60 - 5.25)		9.66 (9.25 - 10.09)	
20.00	8.48 (8.12 - 8.85)		12.85 (12.40 - 13.30)		4.39 (4.09 - 4.70)		3.71 (3.46 - 3.99)	
50.00	5.40 (5.11 - 5.69)		12.07 (11.64 - 12.52)		3.08 (2.84 - 3.35)		2.39 (2.18 - 2.62)	
Spam Misc%	Ham Misc%							
0.01	99.46 (89.91 - 99.97)		99.66 (99.59 - 99.72)		99.83 (96.97 - 99.99)		99.84 (94.18 - 100.00)	
0.02	99.34 (97.64 - 99.82)		99.61 (99.55 - 99.67)		99.45 (98.49 - 99.80)		99.71 (98.37 - 99.95)	
0.05	99.19 (99.12 - 99.25)		99.59 (99.54 - 99.64)		99.22 (99.07 - 99.35)		98.45 (97.03 - 99.19)	
0.10	99.15 (99.08 - 99.22)		99.49 (99.33 - 99.61)		99.15 (99.06 - 99.24)		97.30 (95.85 - 98.25)	
0.20	98.80 (98.38 - 99.12)		99.20 (99.09 - 99.30)		98.84 (98.58 - 99.05)		94.59 (92.87 - 95.92)	
0.50	97.91 (97.73 - 98.07)		98.60 (98.03 - 99.00)		98.05 (97.79 - 98.29)		88.57 (86.43 - 90.41)	
1.00	96.56 (93.91 - 98.08)		97.44 (97.21 - 97.66)		96.47 (95.94 - 96.93)		78.52 (75.54 - 81.23)	
2.00	82.12 (80.44 - 83.69)		96.89 (96.69 - 97.08)		73.65 (68.91 - 77.91)		57.57 (53.02 - 61.99)	
5.00	53.95 (51.35 - 56.54)		92.52 (91.85 - 93.14)		9.70 (7.32 - 12.75)		15.94 (15.75 - 16.14)	
10.00	10.33 (10.04 - 10.64)		89.28 (89.09 - 89.48)		6.76 (6.46 - 7.08)		8.12 (5.88 - 11.11)	
20.00	3.82 (3.48 - 4.20)		3.01 (2.90 - 3.13)		2.83 (2.75 - 2.92)		0.30 (0.27 - 0.33)	
50.00	3.00 (2.92 - 3.08)		2.53 (2.45 - 2.61)		2.69 (2.61 - 2.76)		0.21 (0.19 - 0.24)	



Learning Curves

