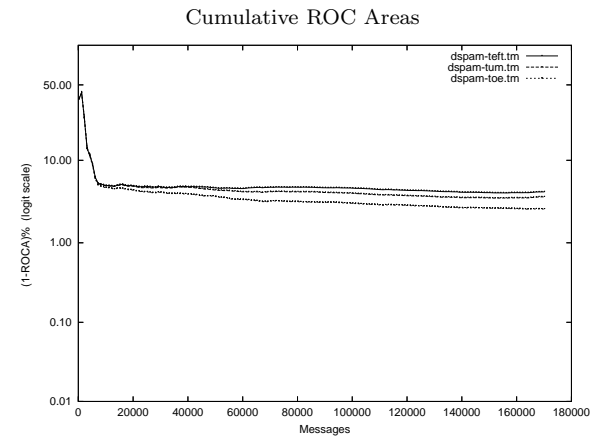
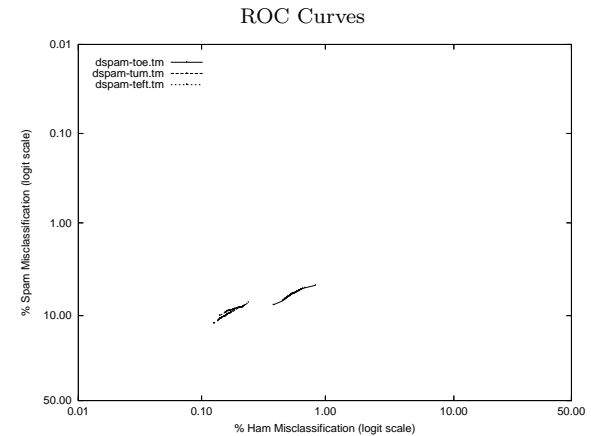


dspam - DSPAM (non-participant) on Private T.M. Corpus

Gold Std. Filter Classification	dspam-teft.tm			dspam-toe.tm			dspam-tum.tm		
	ham spam	ham spam	spam ham	ham spam	ham spam	spam ham	ham spam	ham spam	spam ham
Ham Misc%	0.17 (0.15-0.19)			0.40 (0.37-0.43)			0.24 (0.22-0.27)		
Spam Misc%	9.32 (8.91-9.73)			5.78 (5.46-6.12)			7.48 (7.12-7.86)		
Logit av Misc%	1.31 (1.23-1.40)			1.55 (1.47-1.63)			1.37 (1.30-1.46)		
(1-ROCA)%	4.263 (4.027 - 4.511)			2.626 (2.448 - 2.817)			3.700 (3.499 - 3.912)		
Ham Misc%	Spam Misc%								
0.01	90.54 (85.27 - 94.05)			97.08 (95.47 - 98.13)			94.08 (90.04 - 96.54)		
0.02	85.03 (79.17 - 89.45)			93.51 (91.32 - 95.18)			87.62 (81.84 - 91.74)		
0.05	66.14 (57.39 - 73.91)			85.20 (82.18 - 87.79)			70.52 (62.25 - 77.63)		
0.10	33.79 (22.90 - 46.73)			77.16 (74.11 - 79.94)			37.22 (28.10 - 47.35)		
0.20	8.60 (8.08 - 9.16)			53.62 (48.67 - 58.49)			8.31 (7.78 - 8.87)		
0.50	8.58 (8.13 - 9.06)			6.37 (5.87 - 6.91)			7.29 (6.95 - 7.65)		
1.00	8.55 (8.09 - 9.02)			4.82 (4.52 - 5.14)			7.26 (6.92 - 7.62)		
2.00	8.45 (8.01 - 8.92)			4.79 (4.49 - 5.11)			7.19 (6.85 - 7.55)		
5.00	8.14 (7.70 - 8.59)			4.65 (4.36 - 4.97)			6.94 (6.62 - 7.28)		
10.00	7.72 (7.30 - 8.15)			4.44 (4.14 - 4.75)			6.58 (6.27 - 6.91)		
20.00	6.76 (6.39 - 7.16)			3.90 (3.63 - 4.19)			5.74 (5.45 - 6.04)		
50.00	4.21 (3.92 - 4.52)			2.42 (2.21 - 2.64)			3.66 (3.41 - 3.93)		
Spam Misc%	Ham Misc%								
0.01	99.94 (99.74 - 99.99)			100.00 (99.99 - 100.00)			99.94 (99.68 - 99.99)		
0.02	99.82 (99.48 - 99.93)			99.82 (99.51 - 99.93)			99.82 (99.47 - 99.94)		
0.05	99.55 (99.12 - 99.77)			98.93 (97.99 - 99.43)			99.60 (99.24 - 99.79)		
0.10	98.76 (98.06 - 99.21)			96.97 (95.36 - 98.04)			98.84 (98.13 - 99.28)		
0.20	96.88 (95.84 - 97.67)			94.87 (93.09 - 96.20)			96.88 (95.67 - 97.75)		
0.50	93.23 (91.79 - 94.43)			89.84 (87.60 - 91.70)			93.20 (91.49 - 94.58)		
1.00	86.74 (84.68 - 88.56)			79.52 (76.54 - 82.21)			85.80 (83.59 - 87.76)		
2.00	74.92 (72.51 - 77.17)			58.37 (54.25 - 62.37)			72.86 (70.24 - 75.32)		
5.00	41.01 (37.20 - 44.93)			0.77 (0.33 - 1.75)			30.42 (26.54 - 34.60)		
10.00	0.16 (0.13 - 0.18)			0.37 (0.35 - 0.40)			0.14 (0.12 - 0.16)		
20.00	0.12 (0.10 - 0.14)			0.34 (0.31 - 0.37)			0.13 (0.11 - 0.15)		
50.00	0.07 (0.06 - 0.09)			0.22 (0.20 - 0.24)			0.08 (0.07 - 0.09)		



Learning Curves

