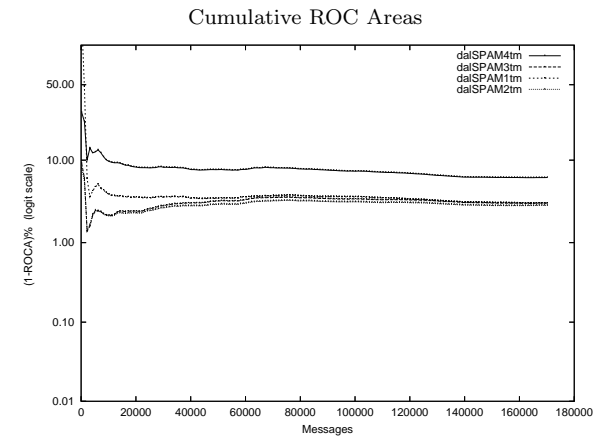
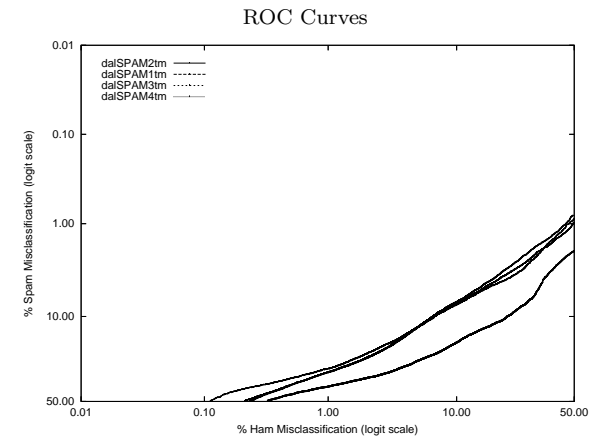


dal - Dalhousie U. on Private T.M. Corpus

Gold Std. Filter Classification	dalSPAM1tm		dalSPAM2tm		dalSPAM3tm		dalSPAM4tm	
	ham spam	ham spam	ham spam	ham spam	ham spam	ham spam	ham spam	ham spam
	149454 1231	4454 15062	142281 8404	2308 17208	142746 7939	2465 17051	146066 4619	4728 14788
Ham Misc%	0.82 (0.77-0.86)		5.58 (5.46-5.69)		5.27 (5.16-5.38)		3.07 (2.98-3.15)	
Spam Misc%	22.82 (22.24-23.42)		11.83 (11.38-12.29)		12.63 (12.17-13.10)		24.23 (23.63-24.83)	
Logit av Misc%	4.70 (4.56-4.85)		8.17 (7.99-8.36)		8.23 (8.05-8.41)		9.14 (8.96-9.32)	
(1-ROCA)%	3.085 (2.968 - 3.207)		2.898 (2.792 - 3.007)		3.090 (2.983 - 3.201)		6.294 (6.127 - 6.466)	
Ham Misc%	Spam Misc%							
0.01	99.37 (99.23 - 99.49)		87.61 (82.64 - 91.31)		87.46 (81.05 - 91.92)		66.74 (63.46 - 69.87)	
0.02	99.31 (99.15 - 99.44)		80.68 (74.20 - 85.85)		75.81 (69.92 - 80.87)		66.16 (65.54 - 66.77)	
0.05	64.48 (54.90 - 73.01)		67.49 (65.20 - 69.70)		65.70 (63.39 - 67.94)		65.94 (64.00 - 67.82)	
0.10	52.08 (49.75 - 54.39)		59.84 (58.01 - 61.64)		59.70 (57.49 - 61.88)		58.51 (57.01 - 59.98)	
0.20	42.53 (41.48 - 43.59)		51.85 (50.45 - 53.25)		50.73 (49.01 - 52.44)		53.69 (52.64 - 54.74)	
0.50	35.77 (34.98 - 36.56)		39.75 (38.52 - 40.99)		39.76 (38.72 - 40.81)		45.80 (45.00 - 46.60)	
1.00	30.21 (29.59 - 30.83)		32.16 (31.35 - 32.98)		32.20 (31.50 - 32.91)		40.83 (40.07 - 41.59)	
2.00	22.90 (22.26 - 23.55)		24.72 (24.00 - 25.46)		24.96 (24.35 - 25.59)		35.75 (35.07 - 36.43)	
5.00	13.01 (12.56 - 13.48)		13.07 (12.51 - 13.64)		13.23 (12.74 - 13.73)		26.39 (25.79 - 27.01)	
10.00	7.65 (7.27 - 8.03)		7.15 (6.79 - 7.52)		7.44 (7.13 - 7.76)		18.08 (17.57 - 18.60)	
20.00	4.42 (4.16 - 4.69)		3.59 (3.36 - 3.83)		4.04 (3.80 - 4.29)		11.32 (10.92 - 11.73)	
50.00	0.89 (0.75 - 1.06)		0.81 (0.70 - 0.94)		0.98 (0.87 - 1.11)		2.02 (1.84 - 2.22)	
Spam Misc%	Ham Misc%							
0.01	99.41 (98.74 - 99.73)		94.07 (69.41 - 99.11)		96.89 (86.78 - 99.33)		98.89 (95.65 - 99.72)	
0.02	98.96 (95.36 - 99.78)		92.78 (83.97 - 96.92)		94.33 (87.26 - 97.59)		97.90 (95.38 - 99.06)	
0.05	93.51 (88.77 - 96.33)		83.40 (78.84 - 87.13)		89.17 (84.27 - 92.68)		96.36 (94.86 - 97.44)	
0.10	86.96 (77.54 - 92.79)		78.34 (73.54 - 82.48)		83.69 (79.51 - 87.16)		94.14 (92.19 - 95.62)	
0.20	78.42 (73.77 - 82.45)		70.22 (66.69 - 73.53)		75.36 (71.14 - 79.14)		90.21 (87.09 - 92.64)	
0.50	63.24 (60.14 - 66.23)		57.37 (53.90 - 60.76)		61.84 (58.59 - 64.99)		79.16 (76.24 - 81.82)	
1.00	47.70 (44.33 - 51.08)		46.27 (43.94 - 48.62)		49.56 (47.37 - 51.75)		66.50 (63.39 - 69.47)	
2.00	35.29 (33.82 - 36.79)		30.72 (28.89 - 32.62)		34.70 (32.23 - 37.25)		50.33 (48.08 - 52.59)	
5.00	16.88 (15.77 - 18.06)		14.80 (14.01 - 15.63)		15.92 (15.15 - 16.73)		34.35 (33.77 - 34.94)	
10.00	6.96 (6.68 - 7.25)		6.70 (6.38 - 7.04)		6.71 (6.42 - 7.01)		22.49 (21.64 - 23.37)	
20.00	2.59 (2.45 - 2.72)		2.97 (2.80 - 3.14)		2.97 (2.84 - 3.11)		8.63 (8.31 - 8.97)	
50.00	0.11 (0.10 - 0.13)		0.23 (0.21 - 0.26)		0.21 (0.19 - 0.24)		0.32 (0.29 - 0.36)	



Learning Curves

