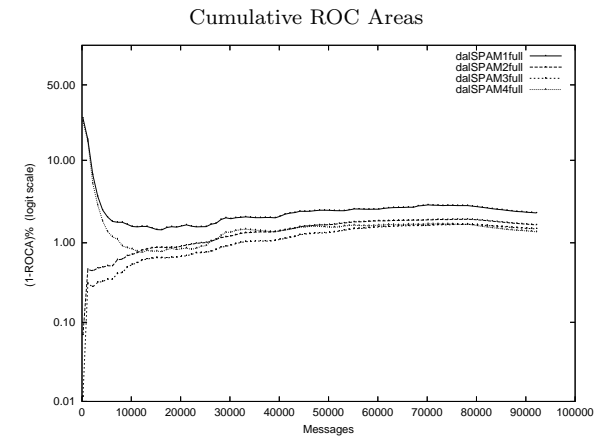
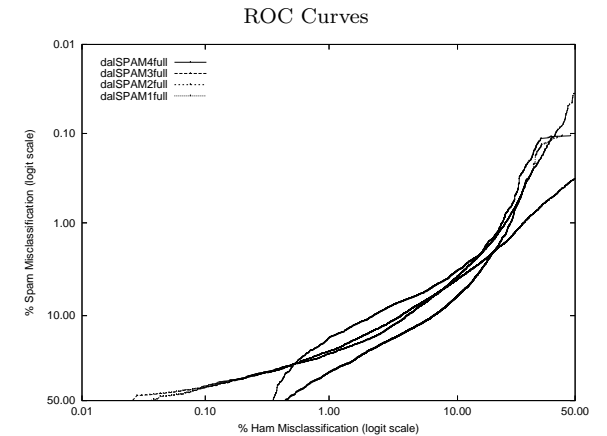


# dal - Dalhousie U. on Public trec05p-1/full Corpus

Gold Std. Filter Classification	dalSPAM1full			dalSPAM2full			dalSPAM3full			dalSPAM4full		
	ham	spam	spam	ham	spam	spam	ham	spam	spam	ham	spam	
	38937	11125		37297	3968		36719	3291		38338	2376	
	462	41665		2102	48822		2680	49499		1061	50414	
Ham Misc%	1.17 (1.07-1.28)			5.34 (5.12-5.56)			6.80 (6.56-7.06)			2.69 (2.54-2.86)		
Spam Misc%	21.07 (20.73-21.42)			7.52 (7.29-7.74)			6.23 (6.03-6.44)			4.50 (4.33-4.68)		
Logit av Misc%	5.33 (5.10-5.57)			6.34 (6.18-6.50)			6.51 (6.35-6.67)			3.49 (3.36-3.61)		
(1-ROCA)%	2.348 (2.255 - 2.444)			1.674 (1.609 - 1.742)			1.491 (1.441 - 1.544)			1.370 (1.306 - 1.436)		
Ham Misc%	Spam Misc%											
0.01	99.97 (99.93 - 99.99)			61.64 (51.41 - 70.94)			59.34 (50.69 - 67.44)			76.80 (75.19 - 78.34)		
0.02	99.93 (99.87 - 99.97)			55.70 (49.32 - 61.90)			53.86 (47.88 - 59.73)			76.77 (76.37 - 77.17)		
0.05	99.87 (99.77 - 99.92)			47.22 (43.79 - 50.68)			45.10 (43.31 - 46.91)			76.71 (76.30 - 77.10)		
0.10	99.75 (99.65 - 99.83)			41.92 (39.17 - 44.72)			41.00 (38.51 - 43.53)			76.58 (76.18 - 76.98)		
0.20	99.39 (99.20 - 99.53)			36.78 (34.76 - 38.84)			36.14 (34.40 - 37.92)			76.22 (75.82 - 76.62)		
0.50	47.07 (43.50 - 50.67)			28.68 (27.07 - 30.34)			28.53 (27.38 - 29.70)			30.29 (25.55 - 35.50)		
1.00	32.74 (30.83 - 34.71)			22.07 (21.22 - 22.95)			23.12 (22.29 - 23.98)			16.60 (15.21 - 18.09)		
2.00	22.36 (21.15 - 23.61)			15.35 (14.65 - 16.08)			17.29 (16.64 - 17.95)			11.16 (10.58 - 11.75)		
5.00	12.63 (12.23 - 13.05)			7.87 (7.52 - 8.24)			8.42 (8.00 - 8.86)			6.18 (5.96 - 6.42)		
10.00	6.36 (6.04 - 6.71)			4.21 (3.96 - 4.48)			3.89 (3.68 - 4.12)			3.37 (3.20 - 3.54)		
20.00	1.62 (1.48 - 1.76)			1.82 (1.70 - 1.94)			1.20 (1.10 - 1.30)			1.08 (0.96 - 1.20)		
50.00	0.11 (0.08 - 0.14)			0.32 (0.28 - 0.37)			0.04 (0.02 - 0.06)			0.11 (0.08 - 0.14)		
Spam Misc%	Ham Misc%											
0.01	100.00 (nan - nan)			86.82 (84.31 - 88.98)			70.66 (62.59 - 77.61)			100.00 (nan - nan)		
0.02	100.00 (nan - nan)			84.34 (81.19 - 87.06)			61.80 (50.76 - 71.74)			100.00 (nan - nan)		
0.05	100.00 (nan - nan)			80.28 (77.76 - 82.58)			46.66 (43.30 - 50.06)			100.00 (nan - nan)		
0.10	100.00 (nan - nan)			72.47 (68.99 - 75.69)			41.19 (37.86 - 44.60)			100.00 (nan - nan)		
0.20	32.24 (31.36 - 33.14)			61.11 (58.45 - 63.71)			33.97 (32.16 - 35.83)			30.40 (28.55 - 32.32)		
0.50	26.88 (26.12 - 27.65)			40.58 (38.24 - 42.98)			26.72 (25.84 - 27.62)			24.57 (23.83 - 25.33)		
1.00	23.10 (22.43 - 23.78)			27.92 (26.74 - 29.14)			21.44 (20.67 - 22.24)			20.40 (19.74 - 21.09)		
2.00	18.42 (17.73 - 19.13)			18.56 (17.77 - 19.37)			15.62 (15.03 - 16.22)			15.28 (14.83 - 15.74)		
5.00	11.93 (11.48 - 12.40)			8.49 (8.04 - 8.97)			8.29 (7.95 - 8.64)			6.59 (6.25 - 6.95)		
10.00	6.73 (6.42 - 7.05)			3.77 (3.56 - 3.98)			4.19 (3.98 - 4.42)			2.27 (2.11 - 2.44)		
20.00	2.42 (2.24 - 2.62)			1.26 (1.14 - 1.38)			1.45 (1.33 - 1.59)			0.82 (0.73 - 0.91)		
50.00	0.44 (0.38 - 0.52)			0.04 (0.02 - 0.06)			0.03 (0.02 - 0.05)			0.36 (0.30 - 0.43)		



## Learning Curves

