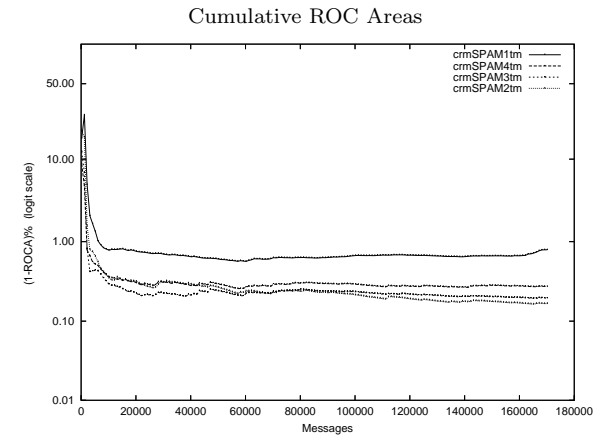
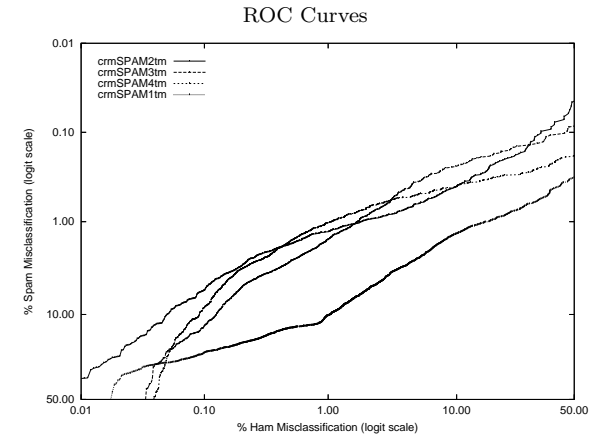


crm - Mitsubishi Electric Research Labs on Private T.M. Corpus

Gold Std. Filter Classification	crmSPAM1tm		crmSPAM2tm		crmSPAM3tm		crmSPAM4tm	
	ham spam	ham spam	ham spam	ham spam	ham spam	ham spam	ham spam	ham spam
Ham Misc%	0.33 (0.31-0.36)		0.21 (0.19-0.24)		0.28 (0.26-0.31)		0.21 (0.18-0.23)	
Spam Misc%	15.72 (15.21-16.24)		2.91 (2.67-3.15)		3.99 (3.72-4.28)		3.26 (3.01-3.52)	
Logit av Misc%	2.44 (2.33-2.56)		0.79 (0.74-0.85)		1.08 (1.01-1.14)		0.83 (0.77-0.89)	
(1-ROCA)%	0.790 (0.720 - 0.868)		0.166 (0.138 - 0.201)		0.195 (0.160 - 0.238)		0.272 (0.225 - 0.329)	
Ham Misc%	Spam Misc%							
0.01	65.45 (40.59 - 84.01)	36.77 (25.23 - 50.05)	87.15 (82.63 - 90.63)	86.51 (80.70 - 90.77)				
0.02	37.96 (25.99 - 51.61)	24.85 (18.91 - 31.93)	77.90 (63.06 - 87.92)	77.58 (71.27 - 82.83)				
0.05	28.03 (26.82 - 29.28)	10.03 (7.60 - 13.13)	22.81 (16.55 - 30.58)	25.04 (12.49 - 43.87)				
0.10	23.12 (21.61 - 24.70)	5.64 (4.71 - 6.74)	13.06 (10.64 - 15.94)	8.59 (6.71 - 10.95)				
0.20	19.01 (18.04 - 20.02)	3.09 (2.71 - 3.52)	5.30 (4.45 - 6.30)	3.34 (2.94 - 3.78)				
0.50	13.62 (13.05 - 14.21)	1.77 (1.58 - 1.98)	2.74 (2.43 - 3.08)	1.64 (1.46 - 1.84)				
1.00	10.28 (9.71 - 10.89)	1.30 (1.15 - 1.46)	1.58 (1.40 - 1.78)	1.04 (0.92 - 1.16)				
2.00	5.73 (5.33 - 6.16)	0.96 (0.85 - 1.09)	0.87 (0.75 - 1.01)	0.73 (0.62 - 0.86)				
5.00	2.60 (2.38 - 2.84)	0.64 (0.53 - 0.76)	0.36 (0.29 - 0.46)	0.51 (0.42 - 0.62)				
10.00	1.36 (1.21 - 1.53)	0.41 (0.32 - 0.52)	0.24 (0.18 - 0.32)	0.41 (0.33 - 0.51)				
20.00	0.89 (0.77 - 1.02)	0.21 (0.15 - 0.30)	0.17 (0.12 - 0.25)	0.32 (0.25 - 0.40)				
50.00	0.32 (0.25 - 0.42)	0.05 (0.02 - 0.10)	0.09 (0.05 - 0.14)	0.18 (0.13 - 0.25)				
Spam Misc%	Ham Misc%							
0.01	99.93 (99.68 - 99.98)	75.17 (31.01 - 95.33)	99.92 (92.88 - 100.00)	99.97 (99.57 - 100.00)				
0.02	99.59 (97.50 - 99.93)	60.54 (38.30 - 79.13)	95.11 (30.52 - 99.88)	99.54 (94.10 - 99.97)				
0.05	97.96 (87.08 - 99.71)	48.91 (40.60 - 57.29)	81.53 (54.81 - 94.14)	93.61 (68.56 - 98.99)				
0.10	76.49 (46.49 - 92.42)	34.94 (25.92 - 45.19)	46.74 (25.66 - 69.05)	77.19 (60.83 - 88.06)				
0.20	64.11 (58.06 - 69.74)	21.45 (13.91 - 31.57)	12.97 (6.73 - 23.54)	43.50 (28.81 - 59.42)				
0.50	38.13 (33.24 - 43.28)	7.48 (5.49 - 10.11)	3.55 (2.90 - 4.35)	5.20 (2.75 - 9.63)				
1.00	16.93 (13.00 - 21.74)	1.86 (1.34 - 2.57)	1.71 (1.49 - 1.97)	1.07 (0.86 - 1.34)				
2.00	6.57 (6.00 - 7.19)	0.38 (0.30 - 0.48)	0.78 (0.68 - 0.89)	0.39 (0.35 - 0.44)				
5.00	2.35 (2.13 - 2.58)	0.11 (0.09 - 0.13)	0.21 (0.18 - 0.24)	0.14 (0.12 - 0.16)				
10.00	1.05 (0.97 - 1.13)	0.05 (0.04 - 0.06)	0.13 (0.11 - 0.15)	0.09 (0.08 - 0.11)				
20.00	0.17 (0.15 - 0.21)	0.02 (0.02 - 0.03)	0.06 (0.05 - 0.08)	0.06 (0.05 - 0.07)				
50.00	0.02 (0.01 - 0.03)	0.01 (0.00 - 0.01)	0.03 (0.03 - 0.05)	0.04 (0.03 - 0.05)				



Learning Curves

