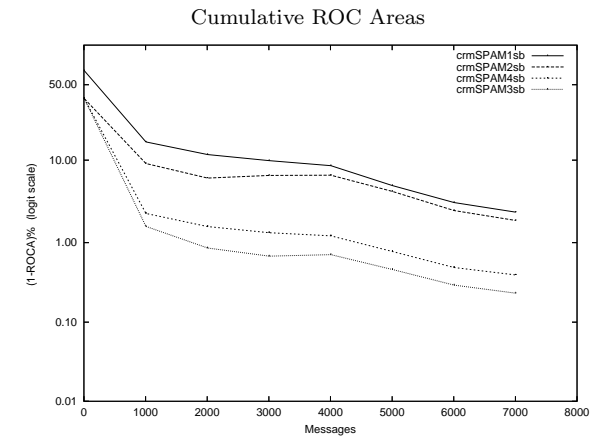
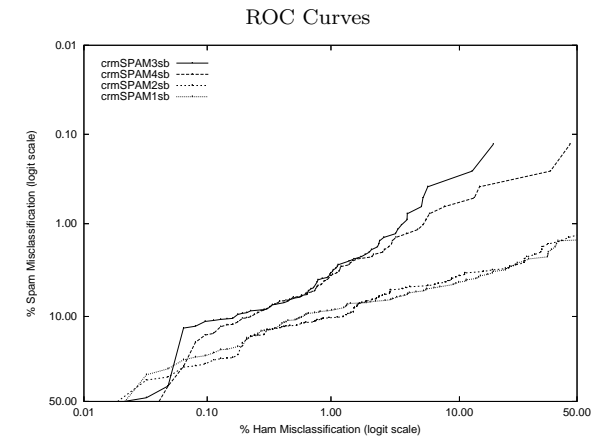


crm - Mitsubishi Electric Research Labs on Private S.B. Corpus

Gold Std. Filter Classification	crmSPAM1sb			crmSPAM2sb			crmSPAM3sb			crmSPAM4sb		
	ham spam	ham spam	spam ham	ham spam	ham spam	spam ham	ham spam	ham spam	spam ham	ham spam	spam ham	
Ham Misc%	0.37 (0.23-0.55)			0.30 (0.18-0.48)			0.34 (0.21-0.51)			0.39 (0.25-0.57)		
Spam Misc%	13.42 (11.10-16.02)			13.55 (11.22-16.16)			7.61 (5.85-9.71)			6.97 (5.28-8.99)		
Logit av Misc%	2.34 (1.87-2.93)			2.14 (1.68-2.73)			1.64 (1.28-2.10)			1.67 (1.32-2.12)		
(1-ROCA)%	2.393 (1.689 - 3.382)			1.888 (1.315 - 2.704)			0.231 (0.142 - 0.377)			0.393 (0.203 - 0.759)		
Ham Misc%	Spam Misc%											
0.01	91.48 (57.06 - 98.86)			74.58 (47.94 - 90.34)			92.77 (48.17 - 99.44)			93.94 (68.00 - 99.12)		
0.02	62.32 (12.76 - 94.92)			54.06 (21.06 - 83.85)			51.61 (7.75 - 93.13)			84.65 (27.17 - 98.79)		
0.05	30.06 (15.02 - 51.11)			34.71 (17.14 - 57.73)			40.13 (8.57 - 82.74)			40.13 (5.56 - 88.42)		
0.10	23.48 (17.49 - 30.77)			27.48 (18.04 - 39.49)			11.23 (4.38 - 25.87)			15.23 (4.26 - 42.06)		
0.20	19.35 (13.52 - 26.93)			18.06 (10.85 - 28.54)			9.29 (7.04 - 12.16)			10.45 (7.03 - 15.26)		
0.50	10.97 (8.54 - 13.98)			12.39 (10.13 - 15.07)			6.71 (4.79 - 9.33)			6.32 (4.60 - 8.63)		
1.00	8.77 (7.05 - 10.88)			10.32 (8.32 - 12.74)			3.48 (2.26 - 5.32)			3.74 (2.32 - 5.97)		
2.00	7.23 (5.54 - 9.38)			6.97 (5.40 - 8.95)			2.19 (1.33 - 3.59)			2.45 (1.39 - 4.30)		
5.00	5.55 (4.17 - 7.36)			4.90 (3.53 - 6.76)			0.77 (0.27 - 2.21)			1.16 (0.54 - 2.47)		
10.00	4.39 (3.20 - 5.99)			3.74 (2.62 - 5.33)			0.39 (0.11 - 1.40)			0.65 (0.22 - 1.91)		
20.00	3.35 (2.29 - 4.89)			3.23 (2.10 - 4.92)			0.13 (0.04 - 0.44)			0.39 (0.11 - 1.40)		
50.00	1.55 (0.91 - 2.61)			1.42 (0.75 - 2.67)			0.06 (0.06 - 0.07)			0.13 (0.04 - 0.42)		
Spam Misc%	Ham Misc%											
0.01	100.00 (nan - nan)			100.00 (nan - nan)			100.00 (nan - nan)			100.00 (nan - nan)		
0.02	100.00 (nan - nan)			100.00 (nan - nan)			100.00 (nan - nan)			100.00 (nan - nan)		
0.05	100.00 (nan - nan)			100.00 (nan - nan)			100.00 (nan - nan)			100.00 (nan - nan)		
0.10	99.95 (nan - nan)			85.33 (80.36 - 89.21)			36.49 (13.89 - 67.19)			63.99 (33.61 - 86.18)		
0.20	99.76 (98.29 - 99.97)			81.09 (73.57 - 86.86)			17.32 (3.73 - 53.10)			46.77 (11.75 - 85.28)		
0.50	99.60 (97.94 - 99.92)			76.46 (63.02 - 86.09)			5.79 (1.84 - 16.81)			13.93 (2.25 - 53.28)		
1.00	97.11 (57.03 - 99.88)			62.35 (37.84 - 81.84)			4.01 (2.40 - 6.63)			5.62 (1.99 - 14.86)		
2.00	38.24 (10.39 - 76.79)			34.09 (17.76 - 55.32)			2.10 (1.21 - 3.62)			2.66 (1.22 - 5.73)		
5.00	7.16 (2.68 - 17.73)			4.20 (1.59 - 10.63)			0.77 (0.49 - 1.22)			0.77 (0.47 - 1.26)		
10.00	0.61 (0.32 - 1.16)			1.32 (0.66 - 2.60)			0.18 (0.08 - 0.40)			0.24 (0.13 - 0.46)		
20.00	0.18 (0.08 - 0.39)			0.19 (0.10 - 0.38)			0.06 (0.02 - 0.20)			0.08 (0.03 - 0.25)		
50.00	0.03 (0.01 - 0.10)			0.03 (0.01 - 0.13)			0.03 (0.01 - 0.13)			0.05 (0.01 - 0.19)		



Learning Curves

