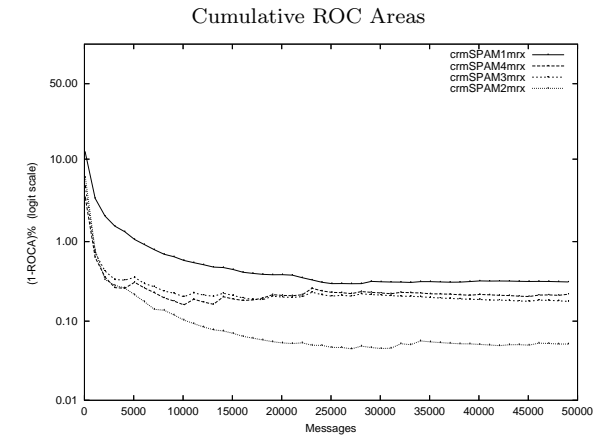
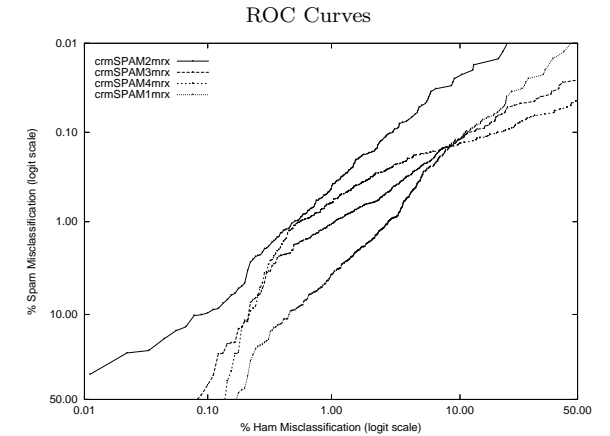


crm - Mitsubishi Electric Research Labs on Private Mr X. Corpus

Gold Std. Filter Classification	crmSPAM1mrx		crmSPAM2mrx		crmSPAM3mrx		crmSPAM4mrx	
	ham spam	ham spam	ham spam	ham spam	ham spam	ham spam	ham spam	ham spam
Ham Misc%	4.22 (3.81-4.65)		1.50 (1.26-1.78)		0.58 (0.43-0.75)		0.67 (0.52-0.87)	
Spam Misc%	0.50 (0.43-0.57)		0.24 (0.19-0.29)		1.66 (1.54-1.79)		0.91 (0.82-1.01)	
Logit av Misc%	1.46 (1.34-1.59)		0.60 (0.53-0.68)		0.98 (0.85-1.13)		0.79 (0.69-0.90)	
(1-ROCA)%	0.311 (0.244 - 0.397)		0.051 (0.035 - 0.075)		0.177 (0.128 - 0.246)		0.218 (0.157 - 0.304)	
Ham Misc%	Spam Misc%							
0.01	100.00 (nan - nan)	47.76 (30.06 - 66.04)	98.88 (93.70 - 99.81)	99.27 (97.84 - 99.75)				
0.02	99.98 (nan - nan)	34.35 (16.09 - 58.81)	94.51 (73.36 - 99.08)	98.77 (95.08 - 99.70)				
0.05	97.39 (46.76 - 99.94)	17.24 (8.51 - 31.81)	85.08 (38.99 - 98.07)	95.55 (86.41 - 98.64)				
0.10	81.61 (53.16 - 94.55)	9.65 (5.45 - 16.53)	40.82 (11.62 - 78.35)	82.36 (30.33 - 98.04)				
0.20	43.00 (17.58 - 72.73)	4.71 (1.90 - 11.20)	11.51 (3.69 - 30.65)	11.80 (1.63 - 51.88)				
0.50	9.07 (6.61 - 12.33)	1.05 (0.75 - 1.47)	1.81 (1.29 - 2.53)	1.11 (0.70 - 1.75)				
1.00	3.85 (2.82 - 5.22)	0.43 (0.31 - 0.62)	1.07 (0.86 - 1.35)	0.63 (0.50 - 0.79)				
2.00	1.68 (1.38 - 2.04)	0.17 (0.13 - 0.22)	0.63 (0.55 - 0.73)	0.33 (0.28 - 0.41)				
5.00	0.36 (0.28 - 0.46)	0.05 (0.03 - 0.08)	0.25 (0.20 - 0.31)	0.18 (0.14 - 0.23)				
10.00	0.12 (0.09 - 0.16)	0.02 (0.01 - 0.05)	0.12 (0.09 - 0.17)	0.13 (0.10 - 0.18)				
20.00	0.05 (0.03 - 0.08)	0.01 (0.00 - 0.04)	0.06 (0.04 - 0.09)	0.10 (0.07 - 0.13)				
50.00	0.01 (0.00 - 0.03)	0.01 (0.00 - 0.03)	0.03 (0.02 - 0.05)	0.04 (0.03 - 0.07)				
Spam Misc%	Ham Misc%							
0.01	46.91 (31.50 - 62.93)	21.22 (3.91 - 64.08)	86.72 (71.73 - 94.39)	86.87 (82.23 - 90.44)				
0.02	35.27 (21.71 - 51.72)	12.39 (4.55 - 29.57)	76.64 (38.75 - 94.45)	81.72 (63.88 - 91.87)				
0.05	20.34 (15.43 - 26.32)	5.17 (3.82 - 6.96)	23.48 (13.05 - 38.54)	46.89 (28.73 - 65.91)				
0.10	10.96 (8.27 - 14.40)	3.09 (2.31 - 4.11)	11.46 (7.73 - 16.67)	18.31 (11.29 - 28.30)				
0.20	6.92 (5.96 - 8.02)	1.63 (1.26 - 2.11)	6.36 (5.15 - 7.84)	4.03 (2.79 - 5.78)				
0.50	4.22 (3.75 - 4.73)	0.91 (0.70 - 1.17)	2.67 (2.22 - 3.20)	1.19 (0.96 - 1.49)				
1.00	2.85 (2.49 - 3.27)	0.51 (0.37 - 0.69)	1.07 (0.83 - 1.39)	0.56 (0.42 - 0.75)				
2.00	1.70 (1.40 - 2.07)	0.29 (0.19 - 0.43)	0.50 (0.37 - 0.68)	0.39 (0.26 - 0.57)				
5.00	0.87 (0.68 - 1.13)	0.20 (0.12 - 0.33)	0.29 (0.19 - 0.44)	0.28 (0.18 - 0.42)				
10.00	0.46 (0.34 - 0.64)	0.10 (0.04 - 0.23)	0.22 (0.13 - 0.36)	0.22 (0.14 - 0.35)				
20.00	0.27 (0.18 - 0.39)	0.04 (0.01 - 0.15)	0.14 (0.08 - 0.25)	0.19 (0.11 - 0.31)				
50.00	0.18 (0.10 - 0.30)	0.01 (0.01 - 0.01)	0.09 (0.04 - 0.19)	0.14 (0.09 - 0.24)				



Learning Curves

