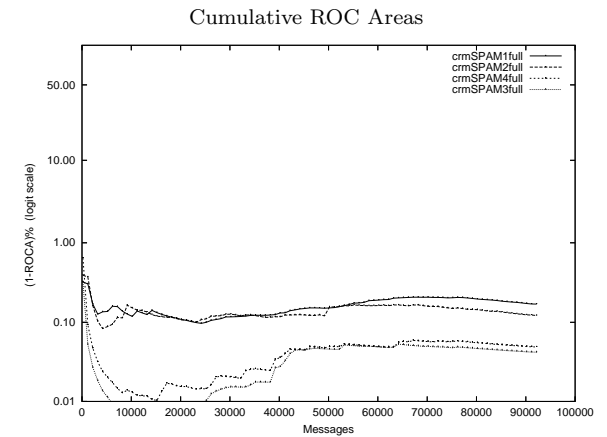
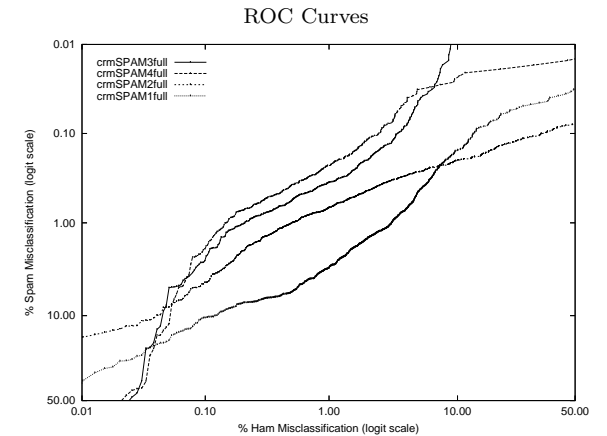


crm - Mitsubishi Electric Research Labs on Public trec05p-1/full Corpus

Gold Std. Filter Classification	crmSPAM1full		crmSPAM2full		crmSPAM3full		crmSPAM4full		
	ham	spam	ham	spam	ham	spam	ham	spam	
Filter	ham	38674	871	ham	39154	457	ham	38392	80
Classification	spam	725	51919	spam	245	52333	spam	1007	52710
Ham Misc%	1.84 (1.71-1.98)		0.62 (0.55-0.70)		2.56 (2.40-2.72)		0.91 (0.82-1.01)		
Spam Misc%	1.65 (1.54-1.76)		0.87 (0.79-0.95)		0.15 (0.12-0.19)		0.25 (0.21-0.29)		
Logit av Misc%	1.74 (1.66-1.83)		0.73 (0.68-0.79)		0.63 (0.56-0.70)		0.47 (0.43-0.52)		
(1-ROCA)%	0.169 (0.151 - 0.190)		0.122 (0.102 - 0.145)		0.042 (0.031 - 0.056)		0.049 (0.035 - 0.068)		
Ham Misc%	Spam Misc%								
0.01	68.46 (10.00 - 97.70)		17.17 (4.79 - 46.06)		93.35 (77.01 - 98.33)		94.74 (79.18 - 98.84)		
0.02	29.54 (15.29 - 49.32)		14.02 (10.66 - 18.23)		67.67 (31.83 - 90.37)		56.14 (11.11 - 92.91)		
0.05	17.98 (13.26 - 23.93)		8.25 (5.52 - 12.16)		7.88 (2.05 - 25.90)		13.06 (3.12 - 41.19)		
0.10	10.53 (8.59 - 12.84)		4.52 (3.40 - 5.98)		2.63 (1.57 - 4.39)		1.96 (1.00 - 3.80)		
0.20	7.52 (6.78 - 8.33)		2.07 (1.61 - 2.66)		1.04 (0.85 - 1.27)		0.73 (0.59 - 0.91)		
0.50	5.74 (5.03 - 6.53)		1.02 (0.90 - 1.16)		0.57 (0.48 - 0.68)		0.38 (0.32 - 0.46)		
1.00	3.14 (2.81 - 3.50)		0.68 (0.59 - 0.79)		0.35 (0.30 - 0.42)		0.23 (0.19 - 0.27)		
2.00	1.52 (1.37 - 1.70)		0.44 (0.39 - 0.51)		0.20 (0.17 - 0.24)		0.12 (0.10 - 0.15)		
5.00	0.47 (0.40 - 0.55)		0.27 (0.23 - 0.33)		0.05 (0.03 - 0.08)		0.03 (0.02 - 0.05)		
10.00	0.16 (0.13 - 0.19)		0.20 (0.16 - 0.25)		0.01 (0.00 - 0.03)		0.02 (0.01 - 0.04)		
20.00	0.06 (0.04 - 0.09)		0.14 (0.11 - 0.18)		0.00 (0.00 - 0.01)		0.02 (0.01 - 0.03)		
50.00	0.03 (0.02 - 0.05)		0.08 (0.06 - 0.11)		0.00 (0.00 - 0.00)		0.02 (0.01 - 0.03)		
Spam Misc%	Ham Misc%								
0.01	98.98 (nan - nan)		98.18 (94.99 - 99.35)		8.97 (6.68 - 11.95)		61.13 (32.20 - 83.89)		
0.02	73.14 (16.48 - 97.41)		93.52 (74.67 - 98.61)		7.47 (5.97 - 9.33)		19.86 (2.77 - 68.33)		
0.05	27.44 (13.86 - 47.05)		71.48 (61.52 - 79.71)		4.92 (4.16 - 5.82)		3.75 (2.81 - 4.98)		
0.10	13.27 (11.23 - 15.62)		36.72 (23.02 - 52.96)		3.56 (2.99 - 4.23)		2.58 (2.02 - 3.29)		
0.20	8.20 (7.09 - 9.45)		10.13 (5.90 - 16.86)		2.05 (1.67 - 2.52)		1.19 (0.92 - 1.54)		
0.50	4.90 (4.60 - 5.22)		1.69 (1.34 - 2.12)		0.57 (0.44 - 0.73)		0.36 (0.27 - 0.48)		
1.00	3.15 (2.94 - 3.38)		0.51 (0.42 - 0.62)		0.21 (0.16 - 0.27)		0.15 (0.11 - 0.20)		
2.00	1.49 (1.34 - 1.65)		0.21 (0.17 - 0.26)		0.11 (0.08 - 0.15)		0.10 (0.07 - 0.14)		
5.00	0.57 (0.49 - 0.66)		0.09 (0.06 - 0.13)		0.06 (0.04 - 0.09)		0.07 (0.04 - 0.11)		
10.00	0.12 (0.09 - 0.17)		0.04 (0.02 - 0.07)		0.05 (0.03 - 0.07)		0.05 (0.03 - 0.09)		
20.00	0.04 (0.02 - 0.07)		0.01 (0.00 - 0.03)		0.04 (0.02 - 0.06)		0.04 (0.02 - 0.07)		
50.00	0.01 (0.00 - 0.03)		0.00 (0.00 - 0.01)		0.03 (0.01 - 0.04)		0.02 (0.01 - 0.04)		



Learning Curves

