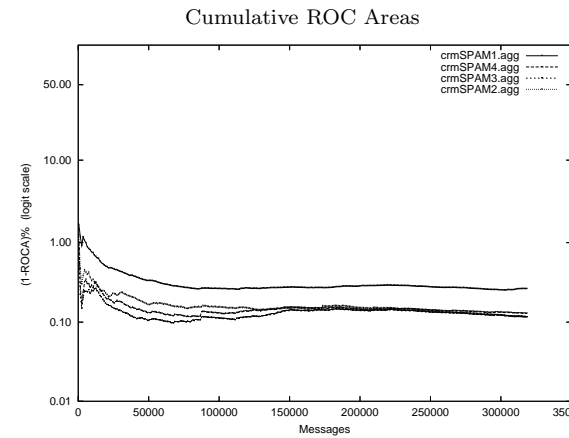
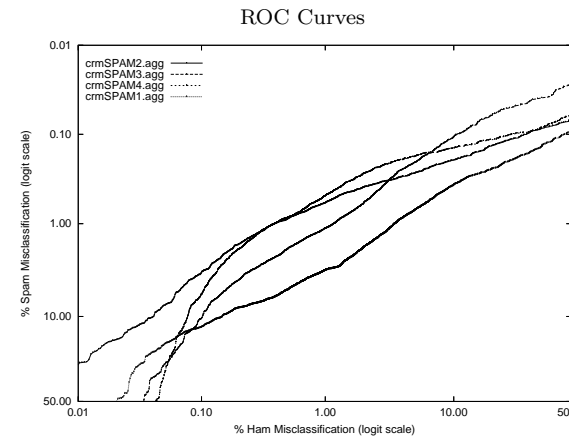


crm - Mitsubishi Electric Research Labs on Aggregate of full, mrx, sb, tm Corpus

Gold Std. Filter Classification	crmSPAM1.agg		crmSPAM2.agg		crmSPAM3.agg		crmSPAM4.agg	
	ham spam	ham spam	ham spam	ham spam	ham spam	ham spam	ham spam	ham spam
	203720 1633	4243 108886	204633 720	1224 111905	203846 1507	1584 111545	204596 757	1186 111943
Ham Misc%	0.80 (0.76-0.83)		0.35 (0.33-0.38)		0.73 (0.70-0.77)		0.37 (0.34-0.40)	
Spam Misc%	3.75 (3.64-3.86)		1.08 (1.02-1.14)		1.40 (1.33-1.47)		1.05 (0.99-1.11)	
Logit av Misc%	1.74 (1.69-1.79)		0.62 (0.59-0.65)		1.01 (0.98-1.05)		0.62 (0.59-0.65)	
(1-ROCA)%	0.263 (0.246 - 0.281)		0.115 (0.103 - 0.129)		0.116 (0.106 - 0.127)		0.128 (0.114 - 0.145)	
Ham Misc%	Spam Misc%							
0.01	87.71 (73.68 - 94.79)		29.30 (20.07 - 40.62)		86.17 (82.00 - 89.49)		91.26 (87.54 - 93.94)	
0.02	50.92 (35.23 - 66.43)		16.95 (14.28 - 20.00)		76.49 (67.75 - 83.44)		81.35 (72.68 - 87.74)	
0.05	18.72 (16.25 - 21.47)		7.70 (6.41 - 9.23)		27.93 (22.01 - 34.73)		33.77 (18.20 - 53.89)	
0.10	12.79 (11.84 - 13.80)		3.46 (3.05 - 3.92)		10.50 (8.41 - 13.04)		5.90 (4.52 - 7.66)	
0.20	8.17 (7.91 - 8.43)		1.69 (1.56 - 1.83)		4.20 (3.80 - 4.65)		1.93 (1.75 - 2.13)	
0.50	5.30 (5.03 - 5.59)		0.88 (0.82 - 0.95)		1.91 (1.79 - 2.03)		0.86 (0.80 - 0.92)	
1.00	3.26 (3.13 - 3.39)		0.59 (0.54 - 0.63)		1.13 (1.05 - 1.21)		0.49 (0.44 - 0.54)	
2.00	1.85 (1.74 - 1.97)		0.40 (0.36 - 0.44)		0.61 (0.55 - 0.66)		0.28 (0.25 - 0.32)	
5.00	0.72 (0.67 - 0.78)		0.27 (0.25 - 0.30)		0.21 (0.18 - 0.24)		0.18 (0.15 - 0.21)	
10.00	0.37 (0.34 - 0.41)		0.20 (0.17 - 0.22)		0.11 (0.09 - 0.13)		0.14 (0.12 - 0.17)	
20.00	0.24 (0.21 - 0.27)		0.13 (0.11 - 0.15)		0.06 (0.04 - 0.07)		0.11 (0.10 - 0.13)	
50.00	0.09 (0.08 - 0.11)		0.07 (0.06 - 0.08)		0.03 (0.02 - 0.04)		0.06 (0.05 - 0.08)	
Spam Misc%	Ham Misc%							
0.01	99.53 (98.86 - 99.81)		97.73 (93.35 - 99.25)		92.87 (80.48 - 97.63)		97.97 (96.04 - 98.97)	
0.02	97.73 (91.53 - 99.42)		94.06 (90.95 - 96.15)		66.48 (40.04 - 85.49)		91.28 (78.59 - 96.76)	
0.05	66.26 (57.20 - 74.26)		74.10 (49.95 - 89.13)		25.18 (16.32 - 36.75)		62.28 (48.64 - 74.22)	
0.10	46.96 (39.10 - 54.97)		30.30 (23.91 - 37.56)		10.69 (8.44 - 13.46)		24.71 (15.41 - 37.15)	
0.20	23.96 (20.19 - 28.19)		9.41 (7.03 - 12.48)		5.33 (4.58 - 6.21)		3.59 (2.59 - 4.98)	
0.50	7.28 (6.76 - 7.85)		1.26 (1.11 - 1.43)		2.33 (2.17 - 2.51)		0.98 (0.89 - 1.08)	
1.00	3.57 (3.36 - 3.79)		0.39 (0.36 - 0.44)		1.17 (1.08 - 1.27)		0.40 (0.36 - 0.44)	
2.00	1.86 (1.76 - 1.97)		0.17 (0.15 - 0.19)		0.47 (0.44 - 0.50)		0.19 (0.17 - 0.21)	
5.00	0.53 (0.50 - 0.57)		0.07 (0.06 - 0.08)		0.17 (0.15 - 0.19)		0.11 (0.09 - 0.12)	
10.00	0.15 (0.13 - 0.16)		0.04 (0.03 - 0.05)		0.10 (0.09 - 0.11)		0.08 (0.07 - 0.09)	
20.00	0.05 (0.04 - 0.06)		0.02 (0.01 - 0.02)		0.06 (0.06 - 0.08)		0.06 (0.05 - 0.07)	
50.00	0.02 (0.02 - 0.03)		0.00 (0.00 - 0.01)		0.03 (0.03 - 0.04)		0.04 (0.03 - 0.05)	



Learning Curves

