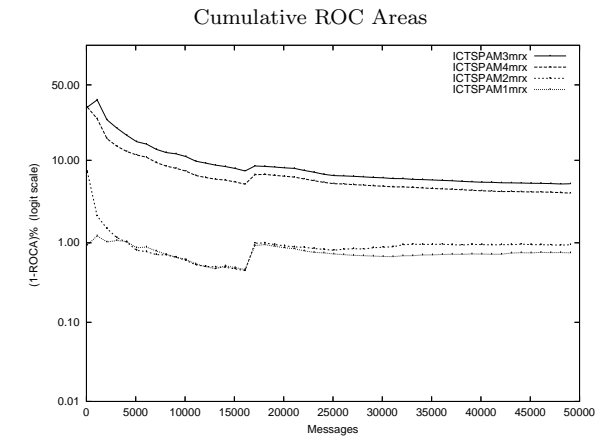
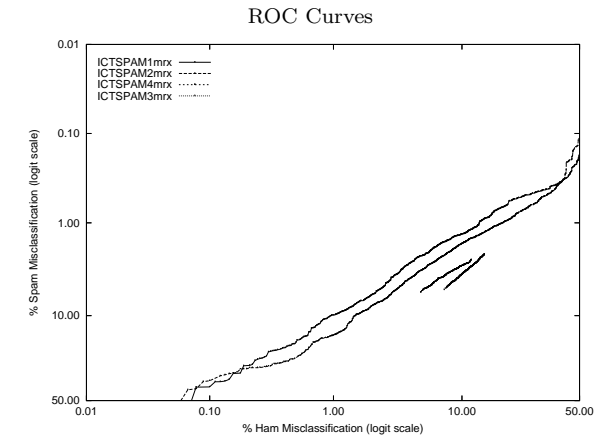


ICT - Chinese Academy of Sciences (ICT) on Private Mr X. Corpus

Gold Std. Filter Classification	ICTSPAM1mrx		ICTSPAM2mrx		ICTSPAM3mrx		ICTSPAM4mrx	
	ham	spam	ham	spam	ham	spam	ham	spam
ham	8634	951	8630	1369	8173	1565	8434	1641
spam	404	39097	408	38679	865	38483	604	38407
Ham Misc%	4.47 (4.05-4.92)		4.51 (4.10-4.96)		9.57 (8.97-10.20)		6.68 (6.18-7.22)	
Spam Misc%	2.37 (2.23-2.53)		3.42 (3.24-3.60)		3.91 (3.72-4.10)		4.10 (3.91-4.30)	
Logit av Misc%	3.26 (3.08-3.46)		3.93 (3.72-4.15)		6.16 (5.91-6.41)		5.24 (5.01-5.49)	
(1-ROCA)%	0.748 (0.675 - 0.828)		0.943 (0.862 - 1.033)		5.328 (4.984 - 5.694)		4.114 (3.848 - 4.399)	
Ham Misc%	Spam Misc%							
0.01	98.95 (83.46 - 99.94)		88.32 (64.41 - 96.93)		99.92 (nan - nan)		99.92 (nan - nan)	
0.02	91.21 (37.67 - 99.44)		69.93 (37.11 - 90.16)		99.55 (98.20 - 99.89)		99.36 (96.97 - 99.87)	
0.05	68.91 (42.91 - 86.73)		53.50 (36.24 - 69.95)		99.34 (98.47 - 99.72)		98.51 (96.25 - 99.42)	
0.10	41.24 (24.66 - 60.07)		37.43 (28.07 - 47.84)		98.50 (96.98 - 99.26)		97.95 (96.03 - 98.95)	
0.20	28.92 (21.58 - 37.56)		30.54 (27.43 - 33.84)		97.33 (95.66 - 98.36)		95.13 (92.28 - 96.97)	
0.50	18.19 (14.55 - 22.51)		25.24 (20.64 - 30.48)		93.85 (91.60 - 95.54)		90.42 (87.14 - 92.93)	
1.00	9.89 (8.67 - 11.26)		15.64 (14.09 - 17.32)		87.99 (84.76 - 90.61)		79.27 (75.12 - 82.89)	
2.00	6.18 (5.41 - 7.04)		8.11 (7.09 - 9.26)		74.89 (70.85 - 78.53)		60.79 (55.69 - 65.67)	
5.00	2.32 (2.12 - 2.55)		3.32 (2.97 - 3.71)		36.85 (30.79 - 43.36)		5.57 (3.10 - 9.80)	
10.00	1.34 (1.24 - 1.45)		1.71 (1.55 - 1.87)		3.70 (3.37 - 4.06)		2.98 (2.79 - 3.19)	
20.00	0.65 (0.58 - 0.74)		0.96 (0.87 - 1.07)		2.46 (2.32 - 2.61)		2.55 (2.40 - 2.70)	
50.00	0.18 (0.14 - 0.23)		0.11 (0.08 - 0.16)		1.56 (1.46 - 1.67)		1.70 (1.57 - 1.83)	
Spam Misc%	Ham Misc%							
0.01	87.46 (79.63 - 92.57)		82.97 (80.59 - 85.11)		99.58 (98.64 - 99.87)		99.58 (98.72 - 99.86)	
0.02	86.57 (77.92 - 92.17)		81.93 (74.58 - 87.52)		99.31 (98.41 - 99.71)		99.30 (98.51 - 99.68)	
0.05	64.30 (54.40 - 73.10)		61.48 (51.29 - 70.77)		98.51 (97.64 - 99.06)		98.25 (97.27 - 98.89)	
0.10	60.17 (57.03 - 63.23)		51.16 (47.28 - 55.03)		97.08 (95.94 - 97.91)		96.74 (95.46 - 97.66)	
0.20	49.36 (46.89 - 51.83)		45.51 (43.07 - 47.97)		93.45 (91.69 - 94.86)		92.93 (91.05 - 94.44)	
0.50	26.28 (20.51 - 32.99)		35.05 (31.50 - 38.77)		85.28 (83.11 - 87.22)		85.16 (83.05 - 87.06)	
1.00	13.35 (12.39 - 14.39)		19.38 (17.19 - 21.78)		68.99 (65.81 - 71.99)		69.98 (66.72 - 73.05)	
2.00	5.91 (5.28 - 6.60)		8.55 (7.72 - 9.47)		35.56 (31.58 - 39.75)		39.87 (35.60 - 44.29)	
5.00	2.52 (2.20 - 2.89)		3.37 (2.96 - 3.85)		7.84 (7.26 - 8.47)		5.66 (5.10 - 6.29)	
10.00	0.96 (0.74 - 1.25)		1.52 (1.26 - 1.82)		7.03 (6.49 - 7.61)		4.71 (4.29 - 5.18)	
20.00	0.42 (0.30 - 0.58)		0.65 (0.49 - 0.87)		6.23 (5.71 - 6.79)		4.17 (3.76 - 4.62)	
50.00	0.08 (0.04 - 0.17)		0.07 (0.03 - 0.16)		4.02 (3.59 - 4.49)		2.56 (2.27 - 2.88)	



Learning Curves

