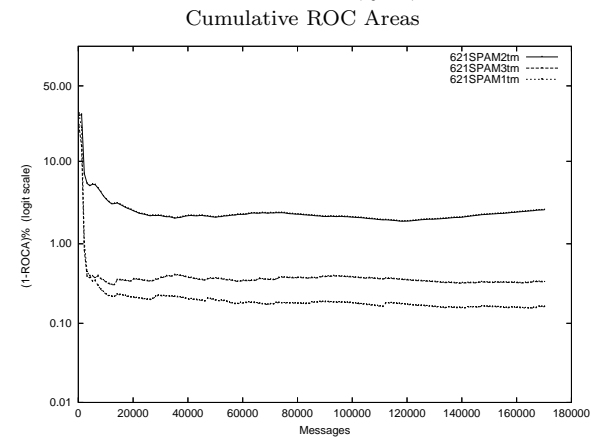
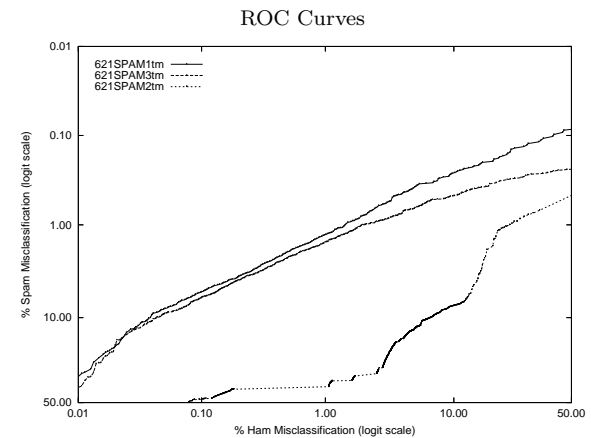


621 - IBM Research (Segal) on Private T.M. Corpus

Gold Std. Filter Classification	621SPAM1tm			621SPAM2tm			621SPAM3tm		
	ham	spam		ham	spam		ham	spam	
Classification	ham	147412	144	ham	144916	3322	ham	150678	12933
	spam	3273	19372	spam	5769	16194	spam	7	6583
Ham Misc%	2.17 (2.10-2.25)			3.83 (3.73-3.93)			0.00 (0.00-0.01)		
Spam Misc%	0.74 (0.62-0.87)			17.02 (16.50-17.56)			66.27 (65.60-66.93)		
Logit av Misc%	1.27 (1.17-1.38)			8.29 (8.12-8.46)			0.95 (0.66-1.37)		
(1-ROCA)%	0.161 (0.130 - 0.200)			2.647 (2.554 - 2.742)			0.332 (0.269 - 0.409)		
Ham Misc%	Spam Misc%								
0.01	33.86 (17.40 - 55.44)			90.87 (83.63 - 95.10)			40.27 (25.31 - 57.28)		
0.02	18.74 (12.48 - 27.18)			71.23 (54.93 - 83.42)			18.35 (11.80 - 27.42)		
0.05	8.08 (6.95 - 9.36)			54.96 (51.88 - 58.00)			9.11 (8.07 - 10.27)		
0.10	5.42 (4.79 - 6.12)			47.89 (46.93 - 48.86)			6.15 (5.60 - 6.76)		
0.20	3.67 (3.31 - 4.08)			41.38 (40.69 - 42.06)			4.05 (3.65 - 4.49)		
0.50	1.99 (1.78 - 2.22)			40.83 (40.21 - 41.46)			2.29 (2.07 - 2.54)		
1.00	1.28 (1.13 - 1.45)			39.98 (39.36 - 40.61)			1.55 (1.37 - 1.75)		
2.00	0.79 (0.68 - 0.92)			33.01 (32.36 - 33.67)			1.00 (0.87 - 1.15)		
5.00	0.38 (0.31 - 0.48)			13.25 (12.67 - 13.85)			0.66 (0.55 - 0.78)		
10.00	0.26 (0.20 - 0.34)			7.56 (7.26 - 7.86)			0.48 (0.39 - 0.58)		
20.00	0.18 (0.14 - 0.24)			1.21 (1.07 - 1.38)			0.34 (0.26 - 0.43)		
50.00	0.09 (0.05 - 0.15)			0.49 (0.40 - 0.60)			0.24 (0.18 - 0.32)		
Spam Misc%	Ham Misc%								
0.01	99.99 (nan - nan)			99.99 (nan - nan)			100.00 (nan - nan)		
0.02	99.98 (91.82 - 100.00)			99.72 (82.44 - 100.00)			99.99 (99.98 - 100.00)		
0.05	76.25 (44.38 - 92.82)			95.98 (91.47 - 98.16)			99.96 (99.91 - 99.98)		
0.10	41.84 (23.60 - 62.62)			89.66 (82.31 - 94.17)			99.93 (99.87 - 99.96)		
0.20	15.67 (9.86 - 23.99)			74.05 (65.56 - 81.04)			79.95 (2.37 - 99.85)		
0.50	3.38 (2.63 - 4.33)			49.45 (41.84 - 57.08)			9.03 (5.65 - 14.13)		
1.00	1.44 (1.19 - 1.73)			23.94 (20.73 - 27.48)			1.99 (1.47 - 2.68)		
2.00	0.50 (0.43 - 0.57)			16.95 (16.49 - 17.41)			0.62 (0.52 - 0.75)		
5.00	0.11 (0.09 - 0.14)			13.51 (13.30 - 13.74)			0.15 (0.12 - 0.17)		
10.00	0.04 (0.03 - 0.05)			6.75 (6.35 - 7.18)			0.04 (0.03 - 0.05)		
20.00	0.02 (0.01 - 0.03)			3.35 (3.26 - 3.45)			0.02 (0.01 - 0.03)		
50.00	0.01 (0.00 - 0.02)			0.08 (0.06 - 0.10)			0.01 (0.00 - 0.01)		



Learning Curves

