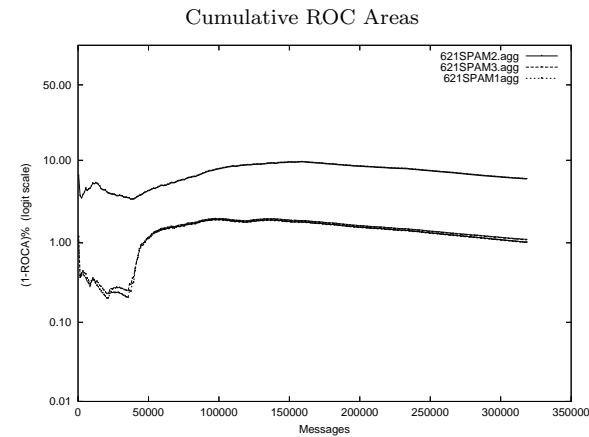
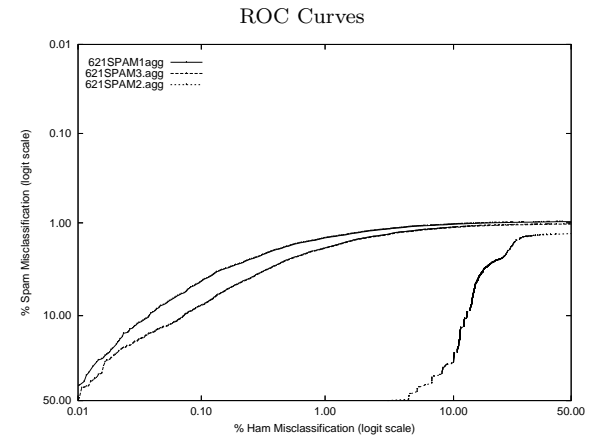


621 - IBM Research (Segal) on Aggregate of full, mrx, sb, tm Corpus

Gold Std. Filter Classification	621SPAM1agg			621SPAM2.agg			621SPAM3.agg		
	ham spam	ham spam	spam	ham spam	ham spam	spam	ham spam	ham spam	spam
Ham Misc%	2.20 (2.14-2.26)			14.59 (14.43-14.74)			0.70 (0.66-0.74)		
Spam Misc%	1.23 (1.17-1.30)			4.50 (4.38-4.62)			12.58 (12.39-12.77)		
Logit av Misc%	1.65 (1.60-1.70)			8.23 (8.12-8.35)			3.08 (3.00-3.17)		
(1-ROCA)%	1.008 (0.960 - 1.058)			6.064 (5.968 - 6.162)			1.090 (1.033 - 1.150)		
Ham Misc%	Spam Misc%								
0.01	40.67 (27.39 - 55.47)			54.35 (53.50 - 55.21)			51.31 (32.72 - 69.54)		
0.02	20.38 (14.07 - 28.59)			54.34 (54.08 - 54.60)			23.20 (16.17 - 32.13)		
0.05	7.69 (6.54 - 9.02)			54.29 (54.03 - 54.55)			12.86 (11.53 - 14.32)		
0.10	4.36 (3.91 - 4.87)			54.21 (53.95 - 54.46)			7.89 (7.19 - 8.65)		
0.20	2.84 (2.70 - 2.98)			53.98 (53.72 - 54.23)			4.66 (4.33 - 5.02)		
0.50	1.82 (1.74 - 1.90)			53.45 (53.19 - 53.71)			2.58 (2.45 - 2.72)		
1.00	1.47 (1.40 - 1.53)			52.50 (52.23 - 52.77)			1.91 (1.83 - 2.00)		
2.00	1.26 (1.20 - 1.32)			51.18 (50.91 - 51.46)			1.50 (1.43 - 1.56)		
5.00	1.10 (1.04 - 1.15)			44.98 (44.60 - 45.36)			1.24 (1.17 - 1.30)		
10.00	1.03 (0.98 - 1.09)			27.12 (24.28 - 30.15)			1.12 (1.06 - 1.19)		
20.00	0.99 (0.95 - 1.05)			2.60 (2.49 - 2.70)			1.07 (1.01 - 1.13)		
50.00	0.97 (0.92 - 1.02)			1.31 (1.24 - 1.38)			1.03 (0.97 - 1.09)		
Spam Misc%	Ham Misc%								
0.01	100.00 (100.00 - 100.00)			100.00 (nan - nan)			100.00 (99.99 - 100.00)		
0.02	100.00 (99.99 - 100.00)			99.99 (99.99 - 100.00)			99.99 (99.98 - 100.00)		
0.05	99.98 (99.97 - 99.99)			99.99 (99.98 - 99.99)			99.98 (99.97 - 99.99)		
0.10	99.96 (99.95 - 99.97)			99.96 (99.95 - 99.97)			99.95 (99.93 - 99.96)		
0.20	99.93 (99.92 - 99.95)			99.92 (99.90 - 99.94)			99.90 (99.88 - 99.92)		
0.50	99.83 (99.81 - 99.85)			99.83 (99.80 - 99.85)			99.78 (99.75 - 99.81)		
1.00	17.67 (1.68 - 72.98)			95.98 (84.47 - 99.05)			99.58 (57.81 - 100.00)		
2.00	0.39 (0.35 - 0.44)			23.91 (23.30 - 24.53)			0.88 (0.78 - 1.00)		
5.00	0.08 (0.07 - 0.10)			14.22 (14.05 - 14.39)			0.18 (0.16 - 0.20)		
10.00	0.04 (0.03 - 0.05)			12.46 (12.31 - 12.60)			0.07 (0.06 - 0.08)		
20.00	0.02 (0.02 - 0.03)			10.82 (10.65 - 11.00)			0.02 (0.02 - 0.03)		
50.00	0.01 (0.00 - 0.01)			3.53 (3.17 - 3.93)			0.01 (0.01 - 0.02)		



Learning Curves

