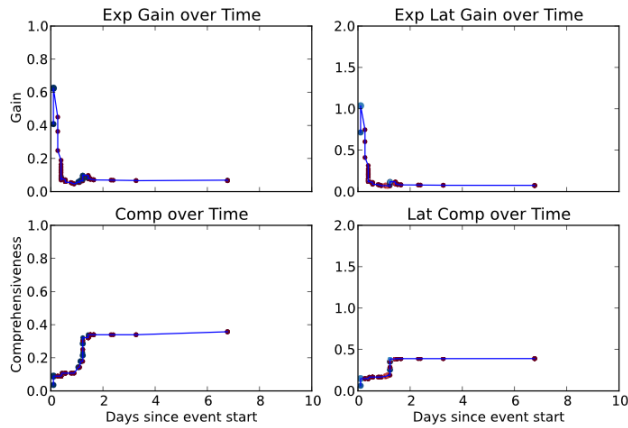


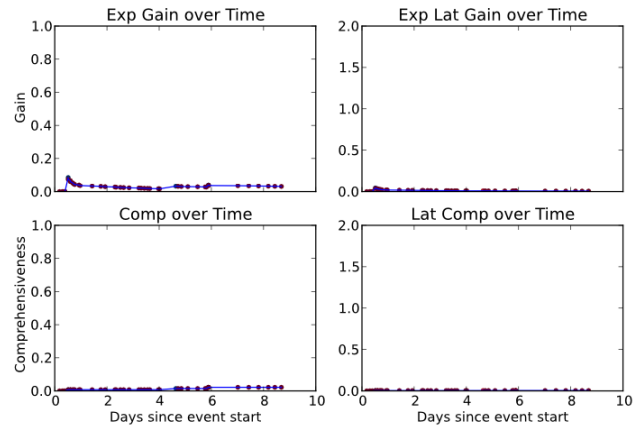
## Temporal Summarization Track results — wim\_GY\_2013-SUS1

QueryID	E[Gain]	E[Latency Gain]	Comprehensiveness	Latency Comp.	E[Verbosity]
1	0.07 (+0.01)	0.07 (-0.00)	0.36 (-0.06)	0.39 (-0.15)	4.28 (-6.96)
2	0.04 (+0.01)	0.07 (+0.01)	0.15 (-0.06)	0.23 (-0.08)	4.05 (-7.40)
3	0.03 (-0.07)	0.01 (-0.09)	0.02 (-0.10)	0.00 (-0.11)	2.13 (-0.66)
4	0.06 (-0.02)	0.03 (-0.04)	0.13 (-0.08)	0.07 (-0.16)	2.39 (-1.26)
5	0 (-0.0)	0 (-0.0)	0 (-0.1)	0 (-0.0)	2.71 (-2.11)
6	0.02 (-0.05)	0.00 (-0.04)	0.01 (-0.06)	0.00 (-0.05)	3.02 (-3.22)
8	0.05 (-0.00)	0.05 (-0.01)	0.10 (-0.16)	0.10 (-0.18)	2.52 (-2.49)
9	0.02 (-0.00)	0.02 (-0.01)	0.16 (-0.15)	0.14 (-0.27)	4.00 (-5.16)
10	0.04 (-0.02)	0.07 (-0.01)	0.22 (-0.21)	0.40 (-0.26)	3.61 (-3.13)
AVG	0.04 (-0.02)	0.04 (-0.02)	0.13 (-0.10)	0.15 (-0.14)	3.19 (-3.60)

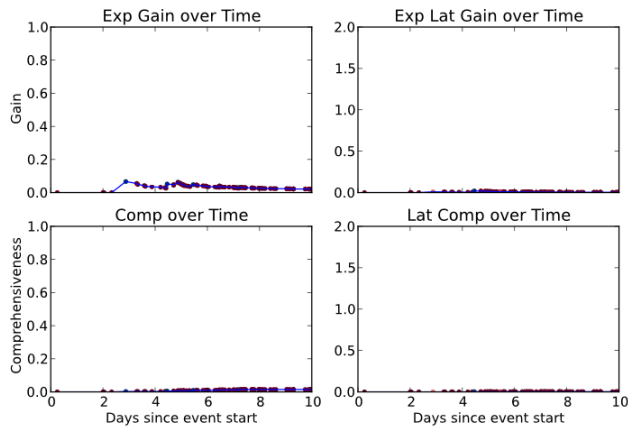
Evaluation Metrics for all queries and mean over all queries. Value in parentheses is difference from the track mean. Expected Gain is a form of precision, Comprehensiveness a form of recall. Latency versions of metrics account for time delay between gold standard information and update (updates before gold standard time allows for metric value > 1).



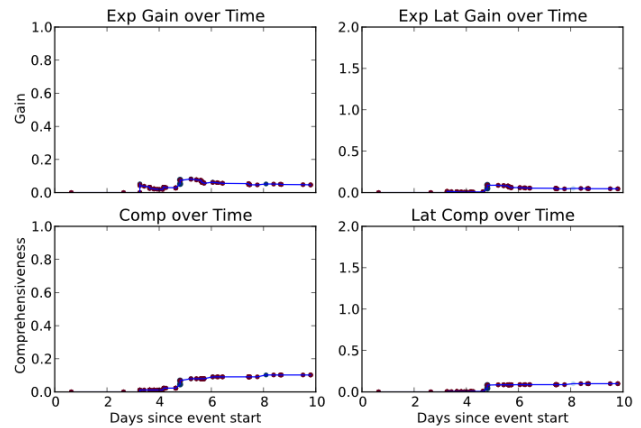
(a) Query 1



(b) Query 3



(c) Query 6



(d) Query 8