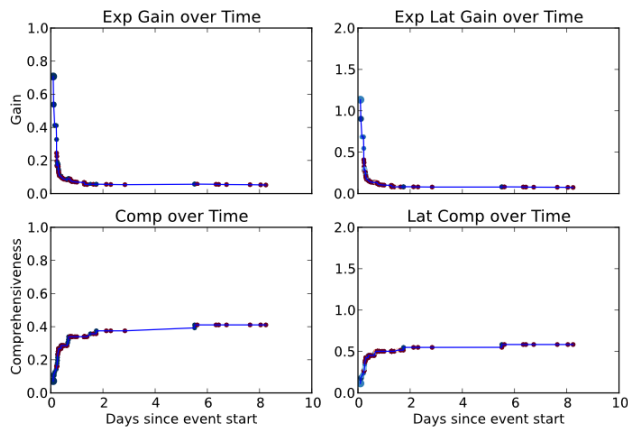


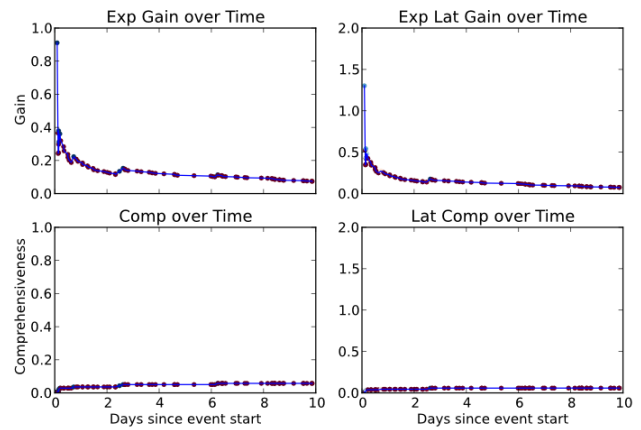
## Temporal Summarization Track results — PRIS-cluster2

QueryID	E[Gain]	E[Latency Gain]	Comprehensiveness	Latency Comp.	E[Verbosity]
1	0.05 (-0.01)	0.07 (-0.00)	0.41 (-0.01)	0.58 (+0.04)	6.06 (-5.18)
2	0.06 (+0.03)	0.10 (+0.04)	0.12 (-0.09)	0.20 (-0.12)	2.46 (-8.99)
3	0.07 (-0.03)	0.07 (-0.02)	0.06 (-0.06)	0.06 (-0.05)	1.44 (-1.35)
4	0.12 (+0.05)	0.10 (+0.03)	0.19 (-0.03)	0.16 (-0.07)	1.63 (-2.02)
5	0.01 (-0.01)	0.00 (+0.00)	0.01 (-0.05)	0.00 (-0.01)	1.80 (-3.02)
6	0.14 (+0.07)	0.07 (+0.03)	0.08 (+0.01)	0.04 (-0.01)	2.21 (-4.02)
8	0.07 (+0.02)	0.09 (+0.04)	0.20 (-0.06)	0.26 (-0.02)	2.20 (-2.82)
9	0.04 (+0.01)	0.05 (+0.01)	0.33 (+0.03)	0.45 (+0.04)	3.66 (-5.49)
10	0.07 (+0.02)	0.10 (+0.01)	0.43 (+0.01)	0.59 (-0.06)	2.89 (-3.85)
AVG	0.07 (+0.02)	0.07 (+0.02)	0.20 (-0.03)	0.26 (-0.03)	2.71 (-4.08)

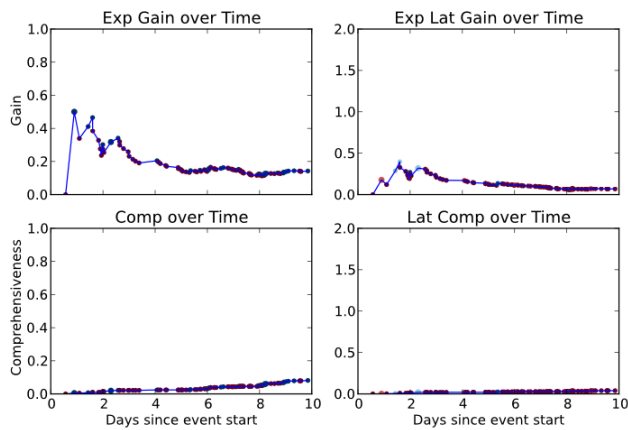
Evaluation Metrics for all queries and mean over all queries. Value in parentheses is difference from the track mean. Expected Gain is a form of precision, Comprehensiveness a form of recall. Latency versions of metrics account for time delay between gold standard information and update (updates before gold standard time allows for metric value  $> 1$ ).



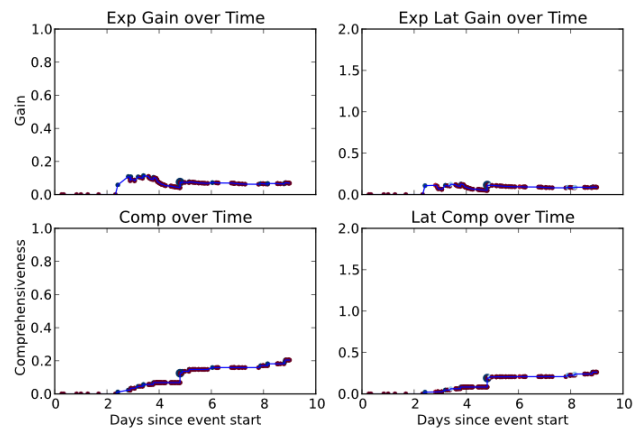
(a) Query 1



(b) Query 3



(c) Query 6



(d) Query 8