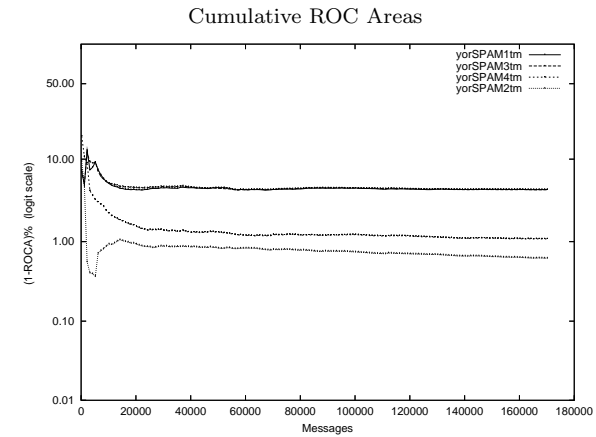
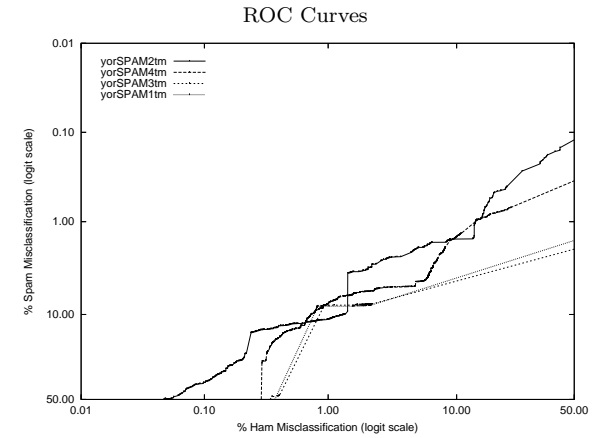


# yor - York U. on Private T.M. Corpus

Gold Std. Filter Classification	yorSPAM1tm		yorSPAM2tm		yorSPAM3tm		yorSPAM4tm	
	ham spam	ham spam	ham spam	ham spam	ham spam	ham spam	ham spam	ham spam
Ham Misc%	0.82 (0.77-0.86)		0.25 (0.22-0.28)		0.92 (0.87-0.97)		0.63 (0.59-0.67)	
Spam Misc%	8.28 (7.89-8.67)		14.90 (14.40-15.41)		8.11 (7.73-8.50)		9.04 (8.64-9.45)	
Logit av Misc%	2.65 (2.56-2.75)		2.05 (1.94-2.16)		2.78 (2.69-2.89)		2.45 (2.35-2.54)	
(1-ROCA)%	4.400 (4.184 - 4.626)		0.619 (0.567 - 0.677)		4.366 (4.132 - 4.612)		1.081 (1.004 - 1.162)	
Ham Misc%	Spam Misc%							
0.01	93.69 (92.35 - 94.81)	67.46 (61.45 - 72.95)	93.30 (91.17 - 94.95)	95.16 (93.82 - 96.23)				
0.02	92.28 (90.61 - 93.67)	59.13 (55.27 - 62.88)	89.90 (87.93 - 91.57)	93.74 (92.48 - 94.81)				
0.05	86.64 (84.30 - 88.68)	49.40 (46.03 - 52.78)	84.37 (82.42 - 86.15)	87.24 (83.30 - 90.36)				
0.10	78.76 (75.09 - 82.01)	39.19 (36.96 - 41.47)	78.42 (75.83 - 80.80)	78.66 (75.49 - 81.52)				
0.20	67.01 (63.59 - 70.25)	26.62 (23.62 - 29.87)	65.73 (63.76 - 67.65)	58.23 (55.88 - 60.54)				
0.50	38.68 (35.03 - 42.46)	12.51 (11.98 - 13.06)	40.35 (37.95 - 42.80)	14.38 (13.72 - 15.07)				
1.00	8.25 (7.85 - 8.67)	11.17 (10.73 - 11.62)	8.04 (7.64 - 8.46)	7.81 (7.30 - 8.36)				
2.00	8.13 (7.73 - 8.55)	3.41 (3.18 - 3.66)	7.93 (7.54 - 8.33)	5.86 (5.54 - 6.20)				
5.00	7.80 (7.43 - 8.20)	2.00 (1.81 - 2.22)	7.56 (7.17 - 7.96)	4.57 (4.27 - 4.88)				
10.00	7.36 (7.01 - 7.73)	1.55 (1.39 - 1.74)	7.11 (6.74 - 7.50)	1.49 (1.33 - 1.66)				
20.00	6.51 (6.17 - 6.86)	0.46 (0.36 - 0.57)	6.34 (5.97 - 6.73)	0.80 (0.69 - 0.93)				
50.00	4.14 (3.87 - 4.42)	0.14 (0.09 - 0.21)	4.10 (3.82 - 4.39)	0.49 (0.41 - 0.59)				
Spam Misc%	Ham Misc%							
0.01	99.80 (nan - nan)	98.36 (95.19 - 99.45)	99.73 (99.44 - 99.87)	99.86 (98.59 - 99.99)				
0.02	99.71 (98.21 - 99.95)	94.76 (85.75 - 98.20)	99.57 (98.91 - 99.83)	98.41 (90.27 - 99.76)				
0.05	98.34 (96.17 - 99.29)	85.42 (73.39 - 92.57)	98.55 (96.78 - 99.35)	95.34 (90.86 - 97.68)				
0.10	97.45 (96.52 - 98.14)	68.67 (50.17 - 82.68)	97.72 (97.17 - 98.16)	90.73 (84.87 - 94.47)				
0.20	96.00 (95.41 - 96.51)	36.06 (26.77 - 46.52)	96.81 (96.38 - 97.20)	78.99 (71.65 - 84.83)				
0.50	93.56 (92.53 - 94.46)	18.07 (15.51 - 20.94)	94.47 (93.73 - 95.13)	48.91 (40.03 - 57.85)				
1.00	86.94 (85.04 - 88.64)	13.69 (12.64 - 14.83)	89.18 (87.27 - 90.84)	13.71 (11.47 - 16.31)				
2.00	75.14 (72.77 - 77.37)	5.04 (4.24 - 5.98)	76.34 (73.69 - 78.81)	8.24 (7.90 - 8.60)				
5.00	38.57 (34.84 - 42.45)	1.43 (1.37 - 1.50)	38.04 (34.14 - 42.09)	4.88 (3.75 - 6.34)				
10.00	0.79 (0.75 - 0.84)	1.33 (1.19 - 1.47)	0.88 (0.84 - 0.93)	0.73 (0.68 - 0.79)				
20.00	0.70 (0.66 - 0.74)	0.23 (0.21 - 0.25)	0.76 (0.72 - 0.80)	0.35 (0.32 - 0.37)				
50.00	0.38 (0.35 - 0.42)	0.05 (0.04 - 0.06)	0.34 (0.31 - 0.36)	0.29 (0.27 - 0.32)				



## Learning Curves

