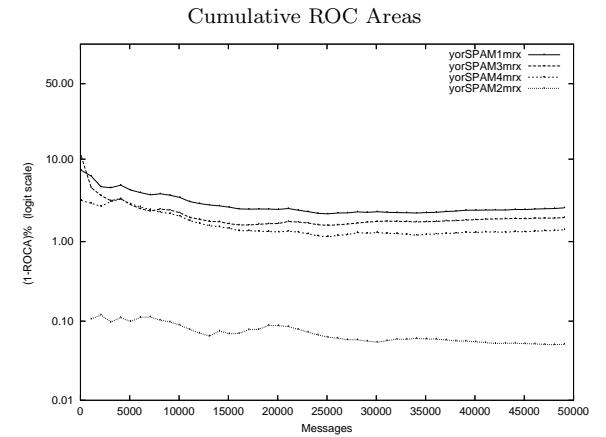
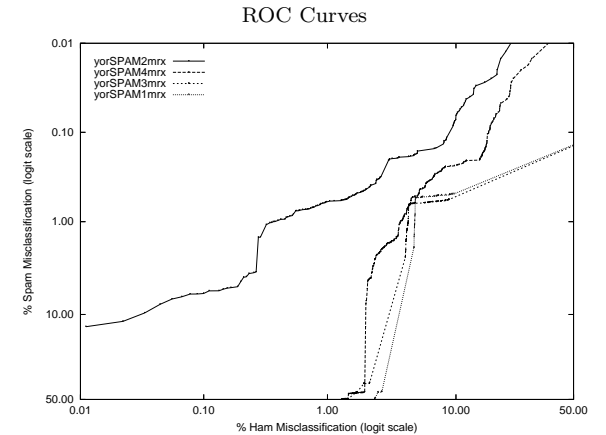


yor - York U. on Private Mr X. Corpus

Gold Std. Filter Classification	yorSPAM1mrx		yorSPAM2mrx		yorSPAM3mrx		yorSPAM4mrx	
	ham	spam	ham	spam	ham	spam	ham	spam
Ham Misc%	8590	219	9007	413	8639	260	8568	179
Spam Misc%	448	39829	31	39635	399	39788	470	39869
Logit av Misc%	4.96 (4.52-5.42)		0.34 (0.23-0.49)		4.41 (4.00-4.86)		5.20 (4.75-5.68)	
(1-ROCA)%	0.55 (0.48-0.62)		1.03 (0.93-1.14)		0.65 (0.57-0.73)		0.45 (0.38-0.52)	
	1.67 (1.54-1.80)		0.60 (0.50-0.71)		1.71 (1.58-1.85)		1.55 (1.42-1.68)	
Ham Misc%	2.632 (2.407 - 2.878)		0.051 (0.039 - 0.067)		1.993 (1.800 - 2.205)		1.407 (1.191 - 1.662)	
			Spam Misc%					
0.01	98.93 (98.43 - 99.28)	42.83 (13.06 - 78.88)	98.48 (95.71 - 99.47)	98.91 (98.42 - 99.25)				
0.02	98.77 (97.71 - 99.34)	13.22 (3.47 - 39.28)	95.56 (88.24 - 98.41)	98.84 (97.74 - 99.41)				
0.05	97.66 (95.95 - 98.66)	7.88 (4.75 - 12.79)	93.91 (91.08 - 95.88)	96.79 (93.35 - 98.48)				
0.10	95.76 (93.49 - 97.26)	6.08 (4.99 - 7.38)	92.07 (88.17 - 94.76)	96.18 (94.41 - 97.41)				
0.20	92.95 (90.87 - 94.59)	4.55 (2.32 - 8.71)	86.26 (81.63 - 89.87)	91.45 (85.80 - 94.98)				
0.50	88.44 (85.73 - 90.69)	0.86 (0.70 - 1.07)	75.20 (70.99 - 78.98)	84.13 (76.03 - 89.86)				
1.00	77.95 (71.89 - 83.01)	0.60 (0.51 - 0.70)	60.19 (54.93 - 65.23)	70.64 (51.29 - 84.61)				
2.00	57.14 (51.36 - 62.74)	0.45 (0.37 - 0.55)	39.91 (35.44 - 44.55)	32.01 (3.17 - 87.13)				
5.00	0.54 (0.09 - 3.32)	0.17 (0.13 - 0.23)	0.62 (0.55 - 0.70)	0.52 (0.43 - 0.63)				
10.00	0.49 (0.43 - 0.56)	0.07 (0.04 - 0.12)	0.56 (0.49 - 0.65)	0.23 (0.19 - 0.28)				
20.00	0.43 (0.37 - 0.49)	0.02 (0.01 - 0.04)	0.48 (0.41 - 0.55)	0.06 (0.04 - 0.09)				
50.00	0.25 (0.21 - 0.30)	0.00 (0.00 - 0.01)	0.30 (0.25 - 0.36)	0.00 (0.00 - 0.02)				
Spam Misc%	Ham Misc%							
0.01	97.22 (89.01 - 99.34)	23.68 (17.62 - 31.03)	91.71 (77.66 - 97.24)	33.92 (22.17 - 48.07)				
0.02	95.68 (89.58 - 98.28)	19.35 (13.91 - 26.27)	88.43 (83.24 - 92.16)	26.36 (18.45 - 36.15)				
0.05	85.61 (80.47 - 89.57)	11.36 (8.93 - 14.35)	83.08 (80.00 - 85.77)	20.24 (17.38 - 23.43)				
0.10	75.86 (69.38 - 81.33)	9.22 (8.12 - 10.44)	76.48 (71.80 - 80.59)	16.98 (15.83 - 18.21)				
0.20	59.44 (52.39 - 66.12)	3.11 (1.94 - 4.95)	62.64 (56.38 - 68.49)	14.82 (10.67 - 20.20)				
0.50	9.02 (4.07 - 18.78)	1.68 (1.27 - 2.23)	16.88 (8.75 - 30.10)	5.22 (4.54 - 6.01)				
1.00	4.90 (4.49 - 5.35)	0.37 (0.24 - 0.55)	4.36 (3.97 - 4.78)	3.78 (3.37 - 4.24)				
2.00	4.82 (4.41 - 5.28)	0.28 (0.19 - 0.41)	4.18 (3.80 - 4.60)	2.73 (2.39 - 3.12)				
5.00	4.71 (4.29 - 5.18)	0.20 (0.13 - 0.31)	3.99 (3.63 - 4.40)	2.08 (1.76 - 2.45)				
10.00	4.39 (3.98 - 4.84)	0.03 (0.01 - 0.11)	3.70 (3.33 - 4.10)	2.02 (1.71 - 2.39)				
20.00	3.87 (3.50 - 4.29)	0.01 (0.00 - 0.04)	3.12 (2.78 - 3.50)	2.01 (1.70 - 2.38)				
50.00	2.38 (2.11 - 2.68)	0.01 (0.01 - 0.01)	1.55 (1.31 - 1.83)	1.28 (1.00 - 1.64)				



Learning Curves

