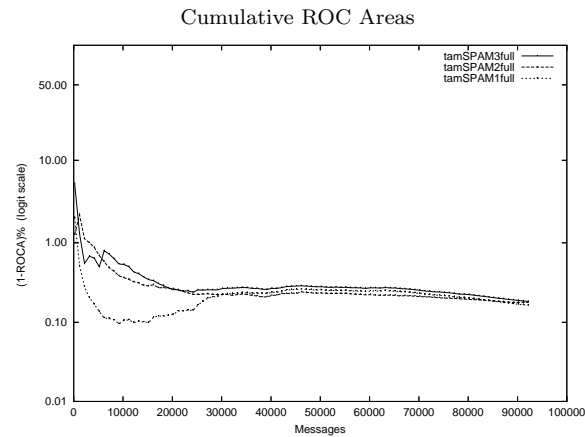
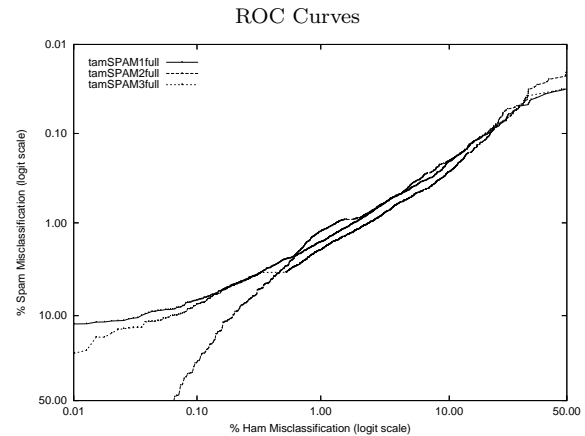


tam - Massey University on Public trec05p-1/full Corpus

Gold Std. Filter Classification	tamSPAM1full		tamSPAM2full		tamSPAM3full	
	ham spam	ham spam	ham spam	ham spam	ham spam	ham spam
Ham Misc%	0.26 (0.21-0.32)		0.85 (0.76-0.94)		0.22 (0.18-0.28)	
Spam Misc%	4.10 (3.93-4.27)		1.45 (1.35-1.55)		4.46 (4.28-4.64)	
Logit av Misc%	1.05 (0.95-1.15)		1.11 (1.04-1.18)		1.01 (0.91-1.12)	
(1-ROCA)%	0.164 (0.142 - 0.189)		0.178 (0.152 - 0.207)		0.183 (0.163 - 0.205)	
Ham Misc%	Spam Misc%					
0.01	12.55 (9.59 - 16.25)	97.30 (90.63 - 99.26)	22.94 (4.64 - 64.58)			
0.02	11.57 (10.43 - 12.83)	89.67 (71.91 - 96.72)	16.24 (10.32 - 24.61)			
0.05	8.87 (7.81 - 10.06)	59.90 (38.67 - 77.97)	11.24 (9.39 - 13.41)			
0.10	6.92 (5.96 - 8.02)	27.38 (16.89 - 41.15)	7.64 (6.15 - 9.45)			
0.20	4.73 (4.13 - 5.42)	9.90 (7.25 - 13.38)	4.86 (4.16 - 5.67)			
0.50	2.58 (2.32 - 2.87)	3.21 (2.66 - 3.87)	3.49 (3.29 - 3.71)			
1.00	1.63 (1.49 - 1.79)	1.25 (1.11 - 1.41)	2.00 (1.80 - 2.22)			
2.00	0.94 (0.84 - 1.05)	0.89 (0.80 - 0.98)	1.18 (1.06 - 1.31)			
5.00	0.43 (0.37 - 0.50)	0.40 (0.34 - 0.46)	0.54 (0.48 - 0.60)			
10.00	0.21 (0.17 - 0.25)	0.20 (0.17 - 0.25)	0.27 (0.23 - 0.32)			
20.00	0.15 (0.12 - 0.19)	0.09 (0.07 - 0.12)	0.16 (0.13 - 0.20)			
50.00	0.09 (0.07 - 0.11)	0.02 (0.01 - 0.04)	0.09 (0.07 - 0.11)			
Spam Misc%	Ham Misc%					
0.01	96.83 (92.67 - 98.67)	91.33 (52.16 - 99.03)	98.04 (95.49 - 99.16)			
0.02	93.55 (87.83 - 96.68)	51.73 (24.23 - 78.22)	93.34 (87.17 - 96.66)			
0.05	79.36 (70.17 - 86.28)	28.22 (20.26 - 37.83)	75.56 (66.89 - 82.55)			
0.10	45.79 (32.52 - 59.69)	18.89 (15.07 - 23.41)	43.69 (31.09 - 57.16)			
0.20	10.57 (8.41 - 13.20)	10.13 (8.21 - 12.43)	12.31 (9.96 - 15.12)			
0.50	4.06 (3.35 - 4.91)	3.94 (3.34 - 4.66)	5.40 (4.61 - 6.32)			
1.00	1.84 (1.59 - 2.13)	1.34 (1.15 - 1.56)	2.46 (2.16 - 2.81)			
2.00	0.77 (0.67 - 0.88)	0.69 (0.60 - 0.79)	1.00 (0.88 - 1.15)			
5.00	0.19 (0.15 - 0.23)	0.35 (0.29 - 0.42)	0.19 (0.14 - 0.25)			
10.00	0.04 (0.02 - 0.06)	0.20 (0.15 - 0.25)	0.06 (0.04 - 0.09)			
20.00	0.00 (0.00 - 0.01)	0.13 (0.09 - 0.17)	0.02 (0.01 - 0.04)			
50.00	0.00 (0.00 - 0.00)	0.07 (0.04 - 0.11)	0.01 (0.00 - 0.02)			



Learning Curves

