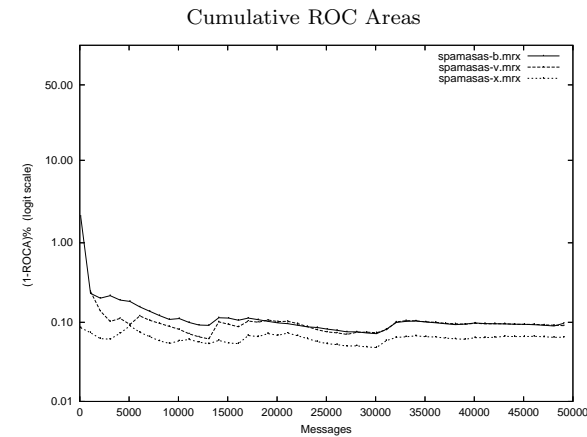
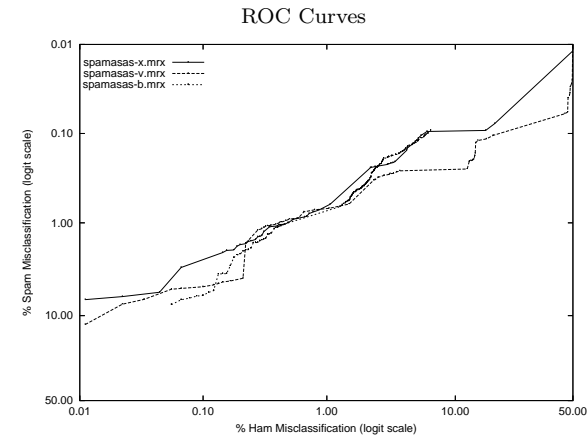


# spamasas - Spamassassin (non-participant) on Private Mr X. Corpus

Gold Std. Filter Classification	spamasas-b.mrx		spamasas-v.mrx		spamasas-x.mrx	
	ham	spam	ham	spam	ham	spam
Classification	8994	401	9036	4686	9025	912
	spam	44	39647	spam	2	35362
Ham Misc%	0.49 (0.35-0.65)		0.02 (0.00-0.08)		0.14 (0.08-0.25)	
Spam Misc%	1.00 (0.91-1.10)		11.70 (11.39-12.02)		2.28 (2.13-2.43)	
Logit av Misc%	0.70 (0.60-0.82)		0.54 (0.27-1.07)		0.58 (0.44-0.76)	
(1-ROCA)%	0.097 (0.070 - 0.135)		0.091 (0.075 - 0.110)		0.065 (0.049 - 0.086)	
Ham Misc%	Spam Misc%					
0.01	83.06 (20.42 - 98.94)		27.22 (9.25 - 57.84)		16.09 (6.49 - 34.62)	
0.02	74.69 (16.77 - 97.74)		12.24 (4.10 - 31.25)		6.84 (2.36 - 18.24)	
0.05	12.82 (2.69 - 43.85)		6.66 (3.54 - 12.19)		3.56 (1.84 - 6.77)	
0.10	6.19 (3.27 - 11.39)		4.97 (3.82 - 6.46)		2.50 (1.81 - 3.44)	
0.20	2.21 (1.26 - 3.87)		4.11 (1.43 - 11.26)		1.73 (1.26 - 2.37)	
0.50	0.99 (0.84 - 1.17)		0.91 (0.78 - 1.06)		0.98 (0.82 - 1.17)	
1.00	0.77 (0.65 - 0.91)		0.69 (0.61 - 0.79)		0.65 (0.53 - 0.80)	
2.00	0.38 (0.29 - 0.49)		0.46 (0.36 - 0.60)		0.33 (0.23 - 0.47)	
5.00	0.13 (0.10 - 0.17)		0.26 (0.21 - 0.32)		0.12 (0.09 - 0.17)	
10.00	0.09 (0.06 - 0.13)		0.25 (0.21 - 0.30)		0.09 (0.07 - 0.14)	
20.00	0.08 (0.05 - 0.12)		0.10 (0.07 - 0.14)		0.07 (0.05 - 0.11)	
50.00	0.05 (0.03 - 0.09)		0.01 (0.00 - 0.05)		0.04 (0.03 - 0.08)	
Spam Misc%	Ham Misc%					
0.01	85.18 (66.29 - 94.39)		49.83 (24.75 - 75.00)		70.07 (63.00 - 76.30)	
0.02	81.41 (65.96 - 90.82)		49.72 (44.96 - 54.49)		66.38 (55.16 - 76.01)	
0.05	55.00 (26.67 - 80.42)		47.59 (40.29 - 54.99)		41.72 (22.17 - 64.29)	
0.10	6.09 (2.10 - 16.39)		20.69 (10.92 - 35.69)		5.75 (1.53 - 19.33)	
0.20	2.79 (2.17 - 3.57)		13.21 (10.06 - 17.17)		3.55 (2.55 - 4.92)	
0.50	1.57 (1.32 - 1.87)		1.87 (1.56 - 2.24)		1.45 (1.11 - 1.90)	
1.00	0.50 (0.33 - 0.76)		0.42 (0.30 - 0.58)		0.49 (0.32 - 0.73)	
2.00	0.23 (0.15 - 0.36)		0.22 (0.14 - 0.34)		0.17 (0.10 - 0.29)	
5.00	0.13 (0.08 - 0.23)		0.10 (0.04 - 0.23)		0.04 (0.01 - 0.16)	
10.00	0.06 (0.02 - 0.19)		0.02 (0.01 - 0.10)		0.01 (0.00 - 0.04)	
20.00	0.04 (0.01 - 0.17)		0.01 (0.00 - 0.04)		0.01 (0.01 - 0.01)	
50.00	0.02 (0.01 - 0.08)		0.01 (0.01 - 0.01)		0.01 (0.01 - 0.01)	



## Learning Curves

