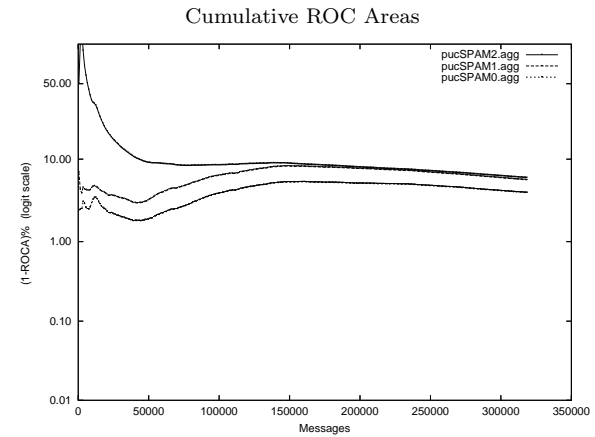
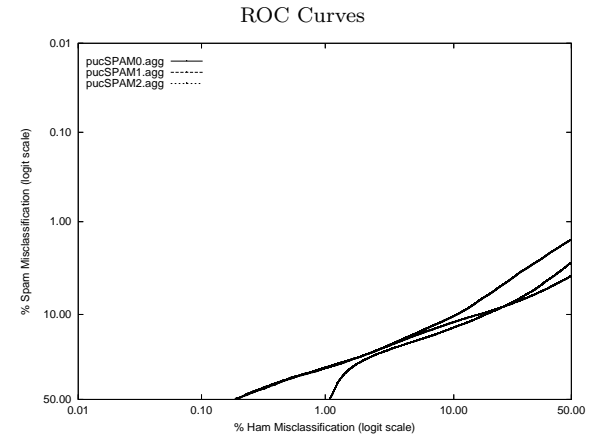


puc - PUCRS on Aggregate of full, mrx, sb, tm Corpus

Gold Std. Filter Classification	pucSPAM0.agg		pucSPAM1.agg		pucSPAM2.agg	
	ham spam	ham spam	ham spam	ham spam	ham spam	ham spam
Ham Misc%	2.21 (2.15-2.28)		2.30 (2.24-2.37)		2.58 (2.51-2.65)	
Spam Misc%	8.06 (7.91-8.22)		8.38 (8.22-8.54)		7.17 (7.02-7.32)	
Logit av Misc%	4.27 (4.19-4.34)		4.44 (4.36-4.51)		4.33 (4.25-4.40)	
(1-ROCA)%	4.030 (3.951 - 4.111)		5.746 (5.647 - 5.846)		6.107 (6.014 - 6.202)	
Ham Misc%	Spam Misc%					
0.01	81.31 (76.82 - 85.09)		80.07 (74.55 - 84.63)		99.99 (99.98 - 99.99)	
0.02	77.87 (75.46 - 80.11)		73.76 (72.53 - 74.96)		99.98 (99.98 - 99.99)	
0.05	68.08 (65.87 - 70.22)		65.09 (62.33 - 67.75)		99.98 (99.97 - 99.99)	
0.10	59.56 (57.81 - 61.29)		57.60 (55.87 - 59.30)		99.98 (99.97 - 99.99)	
0.20	49.51 (48.08 - 50.94)		49.15 (48.07 - 50.24)		99.98 (99.97 - 99.99)	
0.50	37.34 (36.43 - 38.26)		37.68 (37.06 - 38.30)		99.42 (98.93 - 99.69)	
1.00	30.62 (30.14 - 31.11)		31.07 (30.67 - 31.48)		57.54 (53.83 - 61.16)	
2.00	24.49 (24.08 - 24.91)		24.57 (24.23 - 24.92)		27.03 (26.54 - 27.52)	
5.00	15.78 (15.51 - 16.06)		16.37 (16.14 - 16.60)		18.45 (18.20 - 18.70)	
10.00	10.45 (10.25 - 10.65)		12.03 (11.84 - 12.23)		13.59 (13.36 - 13.82)	
20.00	5.44 (5.29 - 5.59)		8.86 (8.69 - 9.03)		9.01 (8.82 - 9.20)	
50.00	1.59 (1.52 - 1.67)		3.95 (3.83 - 4.08)		2.85 (2.76 - 2.95)	
Spam Misc%	Ham Misc%					
0.01	100.00 (nan - nan)		100.00 (nan - nan)		100.00 (nan - nan)	
0.02	100.00 (99.99 - 100.00)		100.00 (99.99 - 100.00)		100.00 (99.99 - 100.00)	
0.05	99.99 (99.99 - 100.00)		99.99 (99.99 - 100.00)		99.99 (99.99 - 100.00)	
0.10	99.99 (99.98 - 99.99)		99.99 (99.98 - 99.99)		99.99 (99.98 - 99.99)	
0.20	99.97 (99.96 - 99.97)		99.97 (99.96 - 99.97)		99.97 (99.96 - 99.97)	
0.50	99.94 (99.91 - 99.96)		99.94 (99.91 - 99.95)		99.93 (99.88 - 99.96)	
1.00	68.64 (64.95 - 72.10)		84.94 (83.25 - 86.49)		80.04 (77.40 - 82.44)	
2.00	43.25 (42.01 - 44.50)		69.63 (68.56 - 70.68)		59.41 (58.39 - 60.42)	
5.00	21.53 (21.00 - 22.07)		41.87 (40.88 - 42.87)		36.14 (35.48 - 36.81)	
10.00	10.64 (10.34 - 10.96)		15.48 (14.82 - 16.16)		17.07 (16.59 - 17.56)	
20.00	3.18 (3.07 - 3.29)		3.26 (3.15 - 3.36)		4.06 (3.91 - 4.20)	
50.00	0.19 (0.18 - 0.21)		0.19 (0.17 - 0.21)		1.09 (1.05 - 1.13)	



Learning Curves

