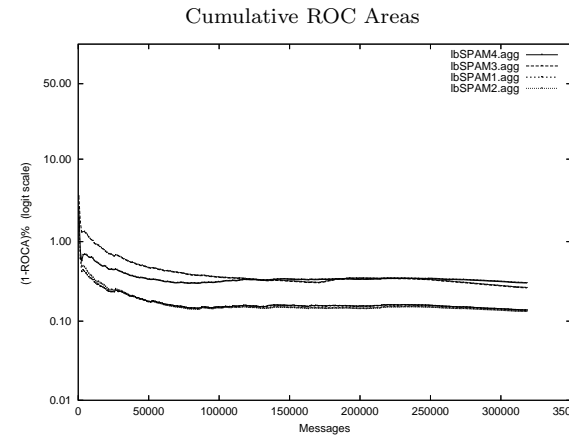
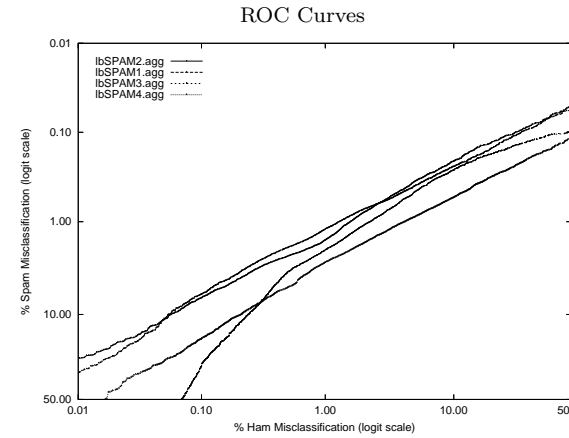


lb - Laird Breyer on Aggregate of full, mrx, sb, tm Corpus

Gold Std. Filter Classification	lbSPAM1.agg		lbSPAM2.agg		lbSPAM3.agg		lbSPAM4.agg	
	ham spam	ham spam	ham spam	ham spam	ham spam	ham spam	ham spam	ham spam
Ham Misc%	0.34 (0.31-0.36)		0.38 (0.35-0.41)		0.68 (0.65-0.72)		0.59 (0.56-0.62)	
Spam Misc%	2.46 (2.37-2.55)		2.75 (2.66-2.85)		2.81 (2.71-2.91)		4.66 (4.53-4.78)	
Logit av Misc%	0.91 (0.88-0.95)		1.03 (0.99-1.07)		1.39 (1.35-1.44)		1.67 (1.62-1.73)	
(1-ROCA)%	0.136 (0.125 - 0.148)		0.132 (0.121 - 0.144)		0.262 (0.244 - 0.281)		0.302 (0.284 - 0.321)	
Ham Misc%	Spam Misc%							
0.01	33.87 (27.94 - 40.36)		25.84 (19.78 - 32.99)		93.32 (92.21 - 94.29)		60.66 (49.19 - 71.07)	
0.02	24.44 (20.36 - 29.04)		19.31 (16.48 - 22.49)		89.07 (83.90 - 92.72)		43.87 (35.48 - 52.63)	
0.05	11.01 (8.41 - 14.28)		11.28 (9.66 - 13.14)		70.84 (63.58 - 77.16)		27.40 (24.42 - 30.60)	
0.10	6.19 (5.68 - 6.74)		6.75 (6.22 - 7.32)		29.95 (23.51 - 37.29)		17.23 (15.56 - 19.03)	
0.20	3.71 (3.39 - 4.06)		4.25 (3.98 - 4.54)		12.69 (11.22 - 14.32)		10.35 (9.65 - 11.09)	
0.50	1.94 (1.84 - 2.04)		2.41 (2.29 - 2.53)		3.59 (3.34 - 3.86)		5.24 (4.96 - 5.55)	
1.00	1.21 (1.14 - 1.29)		1.60 (1.51 - 1.70)		2.07 (1.97 - 2.19)		2.82 (2.67 - 2.98)	
2.00	0.74 (0.69 - 0.79)		0.80 (0.75 - 0.86)		1.12 (1.05 - 1.20)		1.76 (1.67 - 1.86)	
5.00	0.41 (0.37 - 0.45)		0.36 (0.33 - 0.40)		0.48 (0.44 - 0.53)		0.90 (0.85 - 0.96)	
10.00	0.24 (0.22 - 0.27)		0.21 (0.19 - 0.24)		0.27 (0.24 - 0.30)		0.54 (0.50 - 0.58)	
20.00	0.14 (0.12 - 0.16)		0.12 (0.11 - 0.15)		0.17 (0.15 - 0.19)		0.30 (0.26 - 0.33)	
50.00	0.06 (0.04 - 0.07)		0.05 (0.04 - 0.07)		0.10 (0.08 - 0.12)		0.12 (0.10 - 0.14)	
Spam Misc%	Ham Misc%							
0.01	91.25 (83.73 - 95.48)		89.16 (81.72 - 93.81)		99.64 (98.41 - 99.92)		93.46 (85.05 - 97.29)	
0.02	81.12 (74.67 - 86.22)		80.23 (68.09 - 88.53)		97.81 (90.17 - 99.54)		87.18 (83.13 - 90.37)	
0.05	55.67 (44.56 - 66.25)		51.66 (43.52 - 59.71)		85.51 (77.07 - 91.20)		77.35 (73.02 - 81.17)	
0.10	28.29 (23.23 - 33.97)		26.03 (20.65 - 32.23)		48.44 (34.26 - 62.88)		56.14 (49.25 - 62.81)	
0.20	13.19 (11.02 - 15.71)		10.91 (9.37 - 12.67)		14.59 (12.21 - 17.33)		30.70 (26.91 - 34.77)	
0.50	3.80 (3.39 - 4.26)		3.50 (3.18 - 3.86)		4.86 (4.49 - 5.27)		10.92 (9.84 - 12.09)	
1.00	1.30 (1.20 - 1.42)		1.60 (1.50 - 1.71)		2.31 (2.11 - 2.52)		4.31 (3.96 - 4.69)	
2.00	0.47 (0.43 - 0.52)		0.72 (0.66 - 0.79)		1.04 (0.97 - 1.11)		1.67 (1.55 - 1.80)	
5.00	0.13 (0.11 - 0.15)		0.16 (0.15 - 0.18)		0.39 (0.37 - 0.42)		0.55 (0.50 - 0.59)	
10.00	0.05 (0.04 - 0.07)		0.06 (0.05 - 0.07)		0.24 (0.22 - 0.27)		0.21 (0.19 - 0.23)	
20.00	0.03 (0.02 - 0.03)		0.02 (0.01 - 0.03)		0.14 (0.12 - 0.16)		0.08 (0.07 - 0.10)	
50.00	0.01 (0.00 - 0.01)		0.00 (0.00 - 0.01)		0.07 (0.06 - 0.08)		0.02 (0.01 - 0.02)	



Learning Curves

