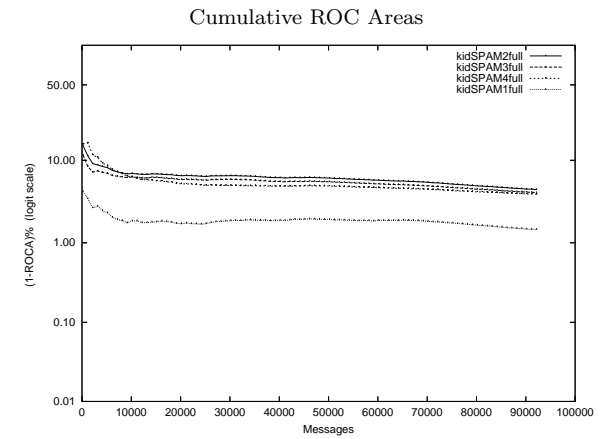
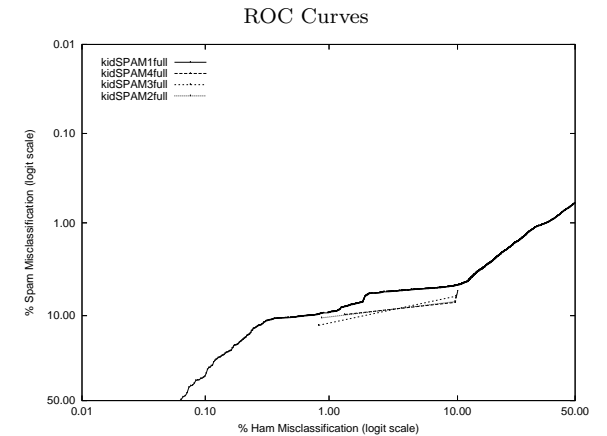


kid - Beijing U. of Posts and Telecom. on Public trec05p-1/full Corpus

Gold Std. Filter Classification	kidSPAM1full		kidSPAM2full		kidSPAM3full		kidSPAM4full	
	ham spam	ham spam	ham spam	ham spam	ham spam	ham spam	ham spam	ham spam
	39042 357	4960 47830	39056 343	5557 47233	39075 324	6591 46198	35563 3836	3470 49320
Ham Misc%	0.91 (0.81-1.00)		0.87 (0.78-0.97)		0.82 (0.74-0.92)		9.74 (9.45-10.03)	
Spam Misc%	9.40 (9.15-9.65)		10.53 (10.27-10.79)		12.49 (12.20-12.77)		6.57 (6.36-6.79)	
Logit av Misc%	2.99 (2.83-3.15)		3.11 (2.95-3.28)		3.33 (3.15-3.51)		8.01 (7.84-8.19)	
(1-ROCA)%	1.463 (1.399 - 1.529)		4.544 (4.408 - 4.685)		4.167 (4.031 - 4.308)		3.990 (3.840 - 4.145)	
Ham Misc%	Spam Misc%							
0.01	97.89 (92.76 - 99.41)		98.48 (96.11 - 99.41)		98.53 (95.49 - 99.53)		98.80 (96.80 - 99.55)	
0.02	88.96 (69.17 - 96.66)		98.15 (96.31 - 99.09)		98.26 (96.52 - 99.14)		98.43 (96.94 - 99.20)	
0.05	58.12 (35.01 - 78.14)		96.00 (93.47 - 97.58)		95.52 (92.87 - 97.22)		96.94 (95.30 - 98.02)	
0.10	34.93 (25.48 - 45.74)		91.65 (88.24 - 94.14)		90.62 (87.35 - 93.12)		93.74 (91.56 - 95.39)	
0.20	17.36 (14.24 - 21.01)		81.13 (75.90 - 85.44)		80.65 (75.86 - 84.68)		86.81 (83.90 - 89.26)	
0.50	10.46 (10.16 - 10.76)		51.47 (43.41 - 59.45)		45.11 (38.37 - 52.04)		66.11 (61.37 - 70.55)	
1.00	9.34 (9.06 - 9.63)		10.47 (10.20 - 10.74)		12.36 (12.09 - 12.63)		32.76 (26.25 - 40.01)	
2.00	6.16 (5.61 - 6.76)		10.13 (9.86 - 10.39)		11.66 (11.38 - 11.94)		9.57 (9.31 - 9.84)	
5.00	5.34 (5.15 - 5.52)		8.90 (8.65 - 9.16)		9.57 (9.28 - 9.86)		8.65 (8.40 - 8.90)	
10.00	4.81 (4.63 - 5.00)		7.14 (6.93 - 7.36)		6.28 (6.07 - 6.49)		5.75 (5.06 - 6.51)	
20.00	2.20 (2.05 - 2.35)		6.37 (6.17 - 6.58)		5.62 (5.42 - 5.82)		4.98 (4.77 - 5.20)	
50.00	0.61 (0.54 - 0.68)		4.04 (3.88 - 4.21)		3.59 (3.43 - 3.75)		3.17 (3.00 - 3.35)	
Spam Misc%	Ham Misc%							
0.01	95.64 (93.54 - 97.08)		99.77 (99.47 - 99.90)		99.69 (99.33 - 99.86)		99.82 (99.56 - 99.92)	
0.02	93.53 (90.69 - 95.54)		99.64 (99.31 - 99.81)		99.56 (99.22 - 99.76)		99.66 (99.37 - 99.82)	
0.05	89.13 (85.54 - 91.92)		99.29 (98.96 - 99.52)		99.07 (98.67 - 99.34)		98.97 (98.60 - 99.25)	
0.10	82.25 (78.98 - 85.10)		98.53 (98.09 - 98.87)		98.07 (97.55 - 98.48)		97.85 (97.20 - 98.34)	
0.20	72.71 (69.10 - 76.04)		97.21 (96.66 - 97.67)		96.85 (96.23 - 97.37)		96.11 (95.25 - 96.82)	
0.50	53.92 (50.97 - 56.84)		93.12 (92.17 - 93.97)		92.42 (91.45 - 93.28)		90.66 (89.51 - 91.69)	
1.00	37.16 (34.08 - 40.36)		87.31 (86.00 - 88.51)		85.77 (84.51 - 86.94)		83.43 (81.96 - 84.81)	
2.00	21.58 (20.41 - 22.79)		75.49 (73.89 - 77.02)		72.42 (70.71 - 74.07)		68.33 (66.31 - 70.29)	
5.00	8.63 (7.19 - 10.34)		37.78 (35.52 - 40.09)		28.19 (25.61 - 30.92)		19.70 (16.38 - 23.51)	
10.00	0.69 (0.55 - 0.85)		2.40 (1.78 - 3.22)		4.31 (3.91 - 4.76)		1.33 (1.17 - 1.51)	
20.00	0.17 (0.13 - 0.22)		0.78 (0.69 - 0.89)		0.76 (0.69 - 0.84)		1.17 (1.07 - 1.28)	
50.00	0.06 (0.04 - 0.10)		0.52 (0.45 - 0.61)		0.45 (0.40 - 0.52)		0.77 (0.70 - 0.86)	



Learning Curves

