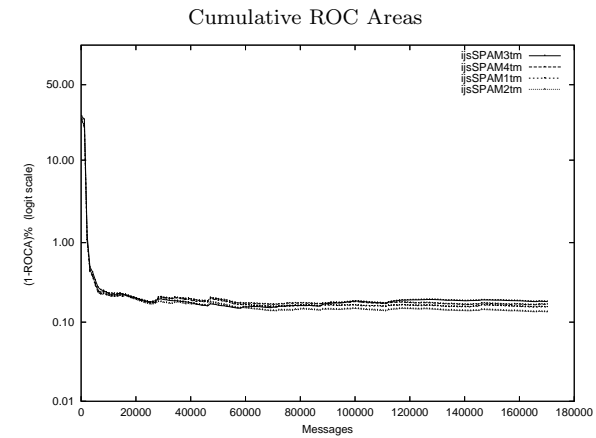
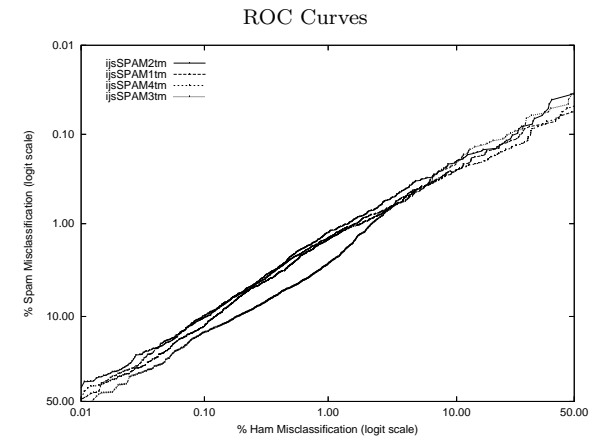


ijs - Jozef Stefan Inst. on Private T.M. Corpus

Gold Std. Filter Classification	ijsSPAM1tm		ijsSPAM2tm		ijsSPAM3tm		ijsSPAM4tm	
	ham spam	ham spam	ham spam	ham spam	ham spam	ham spam	ham spam	ham spam
Ham Misc%	0.36 (0.33-0.39)		0.36 (0.33-0.39)		0.70 (0.66-0.75)		0.43 (0.40-0.46)	
Spam Misc%	3.31 (3.06-3.57)		3.43 (3.18-3.70)		3.87 (3.61-4.15)		3.34 (3.09-3.60)	
Logit av Misc%	1.10 (1.03-1.16)		1.12 (1.06-1.18)		1.66 (1.59-1.74)		1.21 (1.14-1.27)	
(1-ROCA)%	0.155 (0.130 - 0.184)		0.135 (0.111 - 0.163)		0.181 (0.155 - 0.212)		0.167 (0.139 - 0.201)	
Ham Misc%	Spam Misc%							
0.01	48.52 (35.82 - 61.42)		41.60 (34.13 - 49.47)		51.54 (44.09 - 58.92)		48.39 (38.15 - 58.76)	
0.02	32.77 (27.06 - 39.05)		31.21 (25.73 - 37.27)		39.66 (32.66 - 47.11)		34.60 (30.47 - 38.98)	
0.05	18.01 (15.29 - 21.08)		17.07 (14.67 - 19.78)		25.29 (20.77 - 30.40)		21.33 (17.53 - 25.69)	
0.10	9.88 (8.61 - 11.32)		10.31 (9.16 - 11.58)		14.49 (13.18 - 15.90)		12.66 (10.75 - 14.85)	
0.20	5.69 (5.04 - 6.42)		5.73 (5.24 - 6.26)		9.52 (8.71 - 10.40)		6.12 (5.38 - 6.96)	
0.50	2.49 (2.23 - 2.79)		2.32 (2.07 - 2.60)		5.02 (4.67 - 5.40)		2.85 (2.52 - 3.23)	
1.00	1.44 (1.27 - 1.63)		1.26 (1.11 - 1.43)		2.78 (2.52 - 3.06)		1.52 (1.32 - 1.74)	
2.00	0.86 (0.74 - 0.99)		0.78 (0.66 - 0.93)		1.19 (1.05 - 1.35)		0.94 (0.81 - 1.10)	
5.00	0.42 (0.34 - 0.53)		0.33 (0.27 - 0.42)		0.45 (0.36 - 0.55)		0.42 (0.34 - 0.52)	
10.00	0.25 (0.19 - 0.33)		0.20 (0.16 - 0.27)		0.21 (0.15 - 0.29)		0.25 (0.18 - 0.34)	
20.00	0.13 (0.09 - 0.19)		0.13 (0.09 - 0.19)		0.12 (0.08 - 0.18)		0.16 (0.11 - 0.24)	
50.00	0.06 (0.03 - 0.11)		0.04 (0.01 - 0.09)		0.04 (0.01 - 0.09)		0.05 (0.03 - 0.10)	
Spam Misc%	Ham Misc%							
0.01	98.66 (81.80 - 99.92)		98.90 (74.45 - 99.96)		99.54 (76.97 - 99.99)		98.63 (80.95 - 99.92)	
0.02	95.30 (56.47 - 99.69)		74.13 (5.64 - 99.28)		86.01 (24.37 - 99.15)		97.16 (57.57 - 99.88)	
0.05	58.25 (38.63 - 75.57)		38.48 (15.30 - 68.42)		47.10 (18.34 - 77.93)		52.37 (32.51 - 71.50)	
0.10	27.43 (16.98 - 41.13)		25.77 (17.23 - 36.67)		23.29 (13.90 - 36.35)		30.69 (22.13 - 40.82)	
0.20	12.63 (8.91 - 17.61)		10.01 (6.53 - 15.02)		10.22 (7.58 - 13.66)		15.70 (9.01 - 25.94)	
0.50	4.09 (3.30 - 5.07)		3.41 (2.76 - 4.22)		4.44 (3.66 - 5.38)		4.33 (3.58 - 5.22)	
1.00	1.69 (1.38 - 2.07)		1.46 (1.21 - 1.77)		2.24 (2.01 - 2.49)		1.87 (1.45 - 2.42)	
2.00	0.66 (0.57 - 0.75)		0.58 (0.50 - 0.66)		1.35 (1.25 - 1.46)		0.72 (0.62 - 0.84)	
5.00	0.23 (0.20 - 0.27)		0.24 (0.22 - 0.27)		0.50 (0.45 - 0.57)		0.25 (0.22 - 0.29)	
10.00	0.10 (0.08 - 0.12)		0.11 (0.09 - 0.12)		0.18 (0.16 - 0.21)		0.12 (0.11 - 0.14)	
20.00	0.04 (0.03 - 0.05)		0.04 (0.03 - 0.05)		0.07 (0.06 - 0.08)		0.05 (0.04 - 0.07)	
50.00	0.01 (0.01 - 0.02)		0.00 (0.00 - 0.01)		0.01 (0.01 - 0.02)		0.01 (0.01 - 0.02)	



Learning Curves

