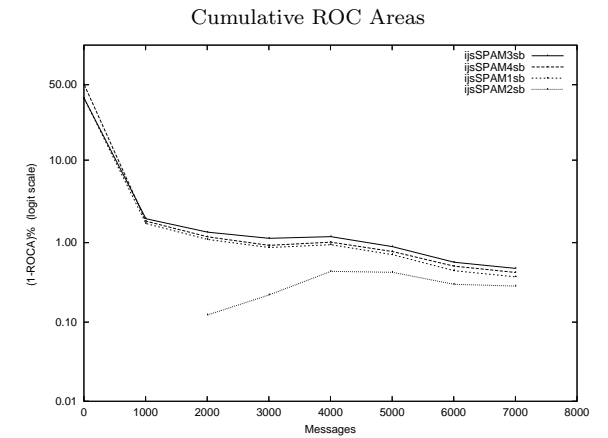
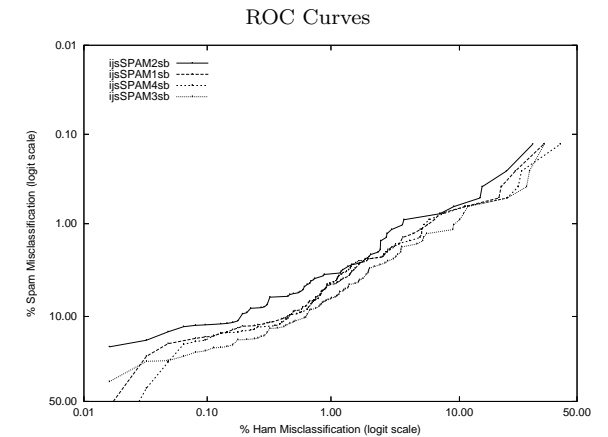


ijs - Jozef Stefan Inst. on Private S.B. Corpus

Gold Std. Filter Classification	ijsSPAM1sb		ijsSPAM2sb		ijsSPAM3sb		ijsSPAM4sb	
	ham spam	ham spam	ham spam	ham spam	ham spam	ham spam	ham spam	ham spam
Ham Misc%	0.35 (0.22-0.53)		0.16 (0.08-0.29)		0.59 (0.42-0.82)		0.30 (0.18-0.48)	
Spam Misc%	11.35 (9.21-13.80)		11.74 (9.56-14.22)		11.10 (8.97-13.52)		12.77 (10.50-15.33)	
Logit av Misc%	2.09 (1.65-2.63)		1.44 (1.04-1.99)		2.66 (2.19-3.22)		2.07 (1.62-2.64)	
(1-ROCA)%	0.372 (0.220 - 0.628)		0.285 (0.159 - 0.508)		0.475 (0.301 - 0.749)		0.422 (0.242 - 0.735)	
Ham Misc%	Spam Misc%							
0.01	77.42 (34.49 - 95.71)		71.48 (19.24 - 96.35)		81.29 (33.57 - 97.39)		100.00 (nan - nan)	
0.02	53.55 (12.35 - 90.41)		19.61 (2.89 - 66.65)		37.55 (6.94 - 82.90)		80.00 (nan - nan)	
0.05	18.32 (6.79 - 40.84)		14.19 (5.64 - 31.40)		25.81 (11.41 - 48.43)		26.58 (6.27 - 66.22)	
0.10	15.87 (11.26 - 21.90)		12.13 (9.13 - 15.94)		21.29 (15.42 - 28.63)		17.03 (10.81 - 25.80)	
0.20	12.52 (9.63 - 16.12)		9.42 (6.48 - 13.50)		16.90 (13.14 - 21.48)		13.94 (11.23 - 17.16)	
0.50	8.90 (6.65 - 11.82)		5.81 (4.17 - 8.04)		11.35 (8.58 - 14.88)		9.55 (6.98 - 12.93)	
1.00	4.65 (3.23 - 6.64)		3.61 (2.43 - 5.33)		6.58 (4.87 - 8.84)		4.52 (2.86 - 7.06)	
2.00	2.45 (1.47 - 4.07)		2.45 (1.37 - 4.36)		3.35 (2.09 - 5.34)		2.45 (1.50 - 3.99)	
5.00	1.29 (0.64 - 2.57)		0.90 (0.38 - 2.11)		1.68 (0.93 - 3.02)		1.55 (0.81 - 2.94)	
10.00	0.77 (0.30 - 2.01)		0.65 (0.20 - 2.03)		1.03 (0.42 - 2.53)		0.77 (0.31 - 1.95)	
20.00	0.39 (0.11 - 1.34)		0.39 (0.11 - 1.38)		0.65 (0.22 - 1.88)		0.65 (0.21 - 1.93)	
50.00	0.06 (0.06 - 0.07)		0.06 (0.06 - 0.07)		0.13 (0.04 - 0.41)		0.13 (0.03 - 0.49)	
Spam Misc%	Ham Misc%							
0.01	100.00 (nan - nan)		100.00 (nan - nan)		100.00 (nan - nan)		100.00 (nan - nan)	
0.02	100.00 (nan - nan)		100.00 (nan - nan)		100.00 (nan - nan)		100.00 (nan - nan)	
0.05	100.00 (nan - nan)		100.00 (nan - nan)		100.00 (nan - nan)		100.00 (nan - nan)	
0.10	47.65 (28.09 - 67.96)		45.74 (23.04 - 70.36)		54.74 (31.74 - 75.89)		56.68 (33.62 - 77.16)	
0.20	34.87 (14.21 - 63.38)		30.35 (11.26 - 59.95)		35.13 (15.05 - 62.34)		42.23 (15.20 - 74.89)	
0.50	19.48 (6.05 - 47.64)		14.51 (4.30 - 39.08)		28.02 (11.24 - 54.49)		24.94 (6.26 - 62.32)	
1.00	6.50 (2.04 - 18.82)		3.79 (1.10 - 12.19)		10.03 (4.07 - 22.65)		5.94 (2.03 - 16.14)	
2.00	2.84 (1.43 - 5.56)		2.47 (1.58 - 3.85)		3.59 (1.89 - 6.75)		2.95 (1.33 - 6.43)	
5.00	0.93 (0.60 - 1.44)		0.61 (0.35 - 1.06)		1.38 (0.91 - 2.09)		0.93 (0.66 - 1.32)	
10.00	0.45 (0.25 - 0.81)		0.19 (0.10 - 0.37)		0.64 (0.43 - 0.96)		0.47 (0.28 - 0.77)	
20.00	0.05 (0.01 - 0.19)		0.02 (0.00 - 0.07)		0.11 (0.04 - 0.36)		0.06 (0.02 - 0.22)	
50.00	0.03 (0.01 - 0.12)		0.02 (0.00 - 0.05)		0.02 (0.00 - 0.06)		0.03 (0.01 - 0.11)	



Learning Curves

