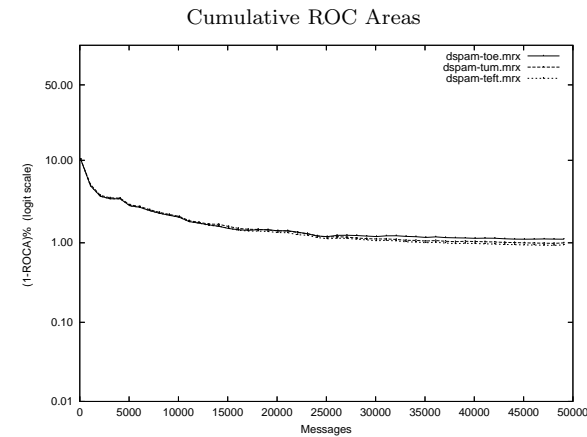
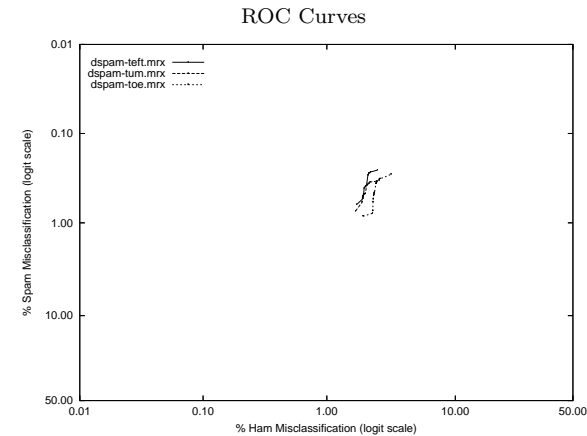


dspam - DSPAM (non-participant) on Private Mr X. Corpus

Gold Std. Filter Classification	dspam-teft.mrx		dspam-toe.mrx		dspam-tum.mrx	
	ham	spam	ham	spam	ham	spam
ham	8871	211	8863	236	8874	230
spam	167	39837	175	39812	164	39818
Ham Misc%	1.85 (1.58-2.15)		1.94 (1.66-2.24)		1.81 (1.55-2.11)	
Spam Misc%	0.53 (0.46-0.60)		0.59 (0.52-0.67)		0.57 (0.50-0.65)	
Logit av Misc%	0.99 (0.89-1.09)		1.07 (0.97-1.18)		1.02 (0.93-1.13)	
(1-ROCA)%	0.942 (0.798 - 1.111)		1.109 (0.944 - 1.303)		0.997 (0.857 - 1.159)	
Ham Misc%	Spam Misc%					
0.01	99.55 (nan - nan)		99.48 (93.47 - 99.96)		99.55 (nan - nan)	
0.02	99.48 (97.54 - 99.89)		99.15 (93.61 - 99.89)		99.48 (96.59 - 99.92)	
0.05	98.36 (95.64 - 99.39)		98.36 (96.12 - 99.32)		98.37 (95.34 - 99.44)	
0.10	95.17 (90.97 - 97.47)		96.23 (93.53 - 97.83)		95.18 (89.53 - 97.85)	
0.20	86.41 (79.76 - 91.12)		89.13 (83.50 - 93.00)		86.77 (78.69 - 92.10)	
0.50	69.91 (60.51 - 77.89)		72.89 (63.98 - 80.28)		70.65 (61.68 - 78.26)	
1.00	35.65 (24.56 - 48.54)		47.28 (36.59 - 58.23)		36.07 (25.68 - 47.94)	
2.00	0.41 (0.14 - 1.17)		0.83 (0.10 - 6.40)		0.48 (0.25 - 0.91)	
5.00	0.26 (0.22 - 0.31)		0.28 (0.24 - 0.34)		0.34 (0.29 - 0.40)	
10.00	0.24 (0.20 - 0.29)		0.27 (0.23 - 0.33)		0.31 (0.26 - 0.37)	
20.00	0.23 (0.19 - 0.28)		0.24 (0.20 - 0.30)		0.30 (0.25 - 0.36)	
50.00	0.15 (0.12 - 0.19)		0.17 (0.13 - 0.21)		0.19 (0.15 - 0.23)	
Spam Misc%	Ham Misc%					
0.01	93.22 (82.11 - 97.63)		92.39 (84.02 - 96.55)		94.82 (88.60 - 97.74)	
0.02	92.17 (85.91 - 95.78)		85.70 (76.40 - 91.74)		93.23 (88.32 - 96.16)	
0.05	80.00 (71.86 - 86.23)		78.07 (68.72 - 85.23)		82.62 (75.33 - 88.09)	
0.10	60.48 (50.80 - 69.40)		64.59 (54.23 - 73.75)		70.06 (61.32 - 77.55)	
0.20	34.21 (16.98 - 56.94)		38.91 (24.77 - 55.21)		45.12 (33.10 - 57.73)	
0.50	1.97 (1.70 - 2.28)		2.37 (2.03 - 2.75)		1.95 (1.69 - 2.25)	
1.00	1.73 (1.47 - 2.02)		1.95 (1.66 - 2.29)		1.69 (1.47 - 1.95)	
2.00	1.71 (1.46 - 2.01)		1.93 (1.64 - 2.26)		1.68 (1.46 - 1.94)	
5.00	1.67 (1.42 - 1.96)		1.86 (1.58 - 2.19)		1.64 (1.41 - 1.90)	
10.00	1.55 (1.32 - 1.82)		1.76 (1.50 - 2.07)		1.53 (1.31 - 1.78)	
20.00	1.33 (1.11 - 1.58)		1.54 (1.30 - 1.82)		1.34 (1.12 - 1.60)	
50.00	0.75 (0.58 - 0.97)		0.94 (0.76 - 1.17)		0.77 (0.62 - 0.97)	



Learning Curves

